

Historic, Archive Document

Do not assume content reflects current scientific knowledge, policies, or practices.

6-11

ANNUAL CATALOG 1934

Monarch

SEED & FEED CO.

MEDFORD
OREGON



VEGETABLE
SEED TRIALS
HORTICULTURE

Everything for Your Garden but the Rain

HELLO FOLKS

Miksche Brothers ~
 send BEST WISHES
 Health and Happiness to you in 1934



And too ~ let us thank you for your many
 past kindnesses. Your patronage
 is heartily appreciated. We have always aimed to

serve you with a type of service that would merit a continuance of your orders. Our
 fast growing list of customers proves that we have, in a measure, been successful.
 However, we do not intend to rest on our oars. On the contrary our efforts in the future will be
 actuated by a desire to improve our position with all of you and to that end let us assure you
 again that only the best for you will be found in our catalog and on our shelves. May we serve
 you again?

Very Sincerely,

MONARCH SEED & FEED CO.,

Miksche Brothers.



Notes About Parcel Post

Poisons can not be sent by mail, but may be shipped by express. Weight limit in all zones 70 lbs.

Customers Please Take Notice

Our Terms are Strictly Cash with Order

We prefer not to send seeds C. O. D., unless order is accompanied by at least one-third of the amount of order.

Weight in pounds	Local	1st. up to 50 miles	2d. 50 to 150 miles	3d. 150 to 300 miles	4th. 300 to 600 miles	5th. 600 to 1,000 miles	6th. 1,000 to 1,400 miles	7th. 1,400 to 1,800 miles	8th. over 1,800 miles
1	10.07	\$0.08	\$0.08	\$0.09	\$0.10	\$0.11	\$0.12	\$0.14	\$0.15
2	.08	.10	.10	.11	.14	.17	.19	.23	.26
3	.08	.11	.11	.13	.17	.22	.26	.32	.37
4	.09	.12	.12	.15	.21	.21	.33	.41	.48
5	.09	.13	.13	.17	.24	.33	.40	.50	.59
6	.10	.14	.14	.19	.28	.38	.47	.59	.70
7	.10	.15	.15	.21	.31	.43	.54	.68	.81
8	.11	.16	.16	.23	.35	.49	.61	.77	.92
9	.11	.17	.17	.25	.38	.54	.68	.86	1.03
10	.12	.18	.18	.27	.42	.59	.75	.95	1.14

How to Remit. Send postal money order, express money order, or check. Stamps will do if your order is for a small amount.

Errors. We exercise every care in handling your orders, but should an error occur, kindly write us at once, and we will adjust it promptly.

All prices in this catalog are subject to change without notice.

Reports—Good or Bad. Will you help us to attain greater success by writing and telling us how our Seeds and Supplies reach you, how they grow and *how you like them?* We will certainly appreciate it. Your criticisms, if you have any, as well as your praises, are desired.

Non-Warranty—Most of the failures with seeds are due to causes entirely beyond our control, such as unfavorable weather or soil conditions, too deep or too shallow planting, etc., which renders it impossible for us to guarantee success, and although we take all possible care to supply only such goods as will, under proper conditions, produce satisfactory results, we still give no warranty as to description, quality or productiveness of any of the seeds we send out, and will not be in any way responsible for the crop. If the purchaser does not accept the goods under these conditions, they are to be at once returned.

WE DO NOT GUARANTEE REPLACEMENT OF GOODS SENT BY MAIL. An additional remittance of five cents will insure any mail package.

THIRTEENTH ANNIVERSARY SENSATIONAL GLADIOLI OFFER

TEN EACH OF TEN BEST VARIETIES
Selected from the following list will
be sent to you postpaid for

You will receive only first-size bulbs on this offer. We promise you the greatest bulb value you ever purchased anywhere.

\$ 2



ANNIVERSARY LIST

DR. F. E. BENNETT
LEON DOUGLAS
W. H. PHIPPS
GOLDEN MEASURE
BYRON L. SMITH
CRIMSON GLOW
ANNA EBERIUS
LOS ANGELES
MRS. FRANCIS KING
NANCY HANKS

ANNIVERSARY OFFER ON SUPER-GIANT PANSY PLANTS

WITHOUT A DOUBT THE MOST SENSATIONAL PANSY PLANT OFFER WE HAVE EVER MADE. ONE DOZEN PLANTS.....

75c

We will fill your order with an assortment of startling new colors, a mixture you will be pleased with. The color blend is of those

2 DOZ. \$1.35
4 DOZ. 2.25
Prices Postpaid

bright, clear, live colors that show so well in mass plantings. The combination of super-giant size, coloring, and texture as exemplified by this variety is sure to thrill you. Order early . . .

EVERY PLANT CARRIES ONE OR MORE FULL BLOOMS



PLANTS READY IN MARCH—BUT ORDER EARLY
We will ship your order when plants are best for moving.

BACK COVER COLLECTION

All American Flower Novelties for 1934

We Feature . . .

OUTSTANDING INTRODUCTIONS SELECTED BY THE "ALL AMERICAN SELECTIONS" COMMITTEE of the American Seed Trade Association. Flower varieties on this page represent the "last word" in new flowers for your 1934 garden. These flowers are being offered garden fans for the first time this year. Your garden will be the envy of all who do not possess these striking novelties.

VERBENA ERECTA COMPACTA (Carmine Ball)—Hardy Annual. Award of Merit. Valuable for bedding or borders. This "All American" selection forms a perfectly symmetrical plant about ten inches high and twelve inches across and is completely covered with bright Carmine flowers. The plants easily carry fifty to sixty trusses in bloom on the plant at one time. It is a continuous bloomer and will make a wonderful bedding plant besides being valuable for pots and borders. **Pkt. 25c**

PETUNIA NANA COMPACTA. Pink Gem. Hardy Annual. Awarded Gold Medal. This is the first of a charming new race of miniature Petunias. It forms a neat compact plant five to six inches high, literally smothered with deep pink blooms. A plant eight inches in diameter will carry as many as twenty-five to thirty blooms in flower at one time. Individual blooms are two inches in diameter. This miniature Petunia will be indispensable for borders, window boxes, pots, rock gardens and for bedding. Planted with dwarf blue Ageratum the effect is most charming. **Pkt. 25c.**

NASTURTIUM, DOUBLE GOLDEN GLEAM—Annual. The romance of old Mexico enters our gardens when we have Golden Gleam Nasturtiums in them. The molten gold of the Mexican sunshine, the cool green verdure of Mexican hillsides or "sierras," the sweetly wafted perfume of a tropical night—all are with us when we have a border or bed of Golden Gleam. They must not be overfed, nor overwatered, or they will go to too much growth and not enough flowers. Easy to grow, sure of fine results, beautiful flowers, masses of color all season, delightful perfume—that is Golden Gleam. **Pkt. 15c.**

LARKSPUR EMPEROR, ENCHANTRESS—Hardy Annual. Award of Merit. Double stock flowered. A fine new Larkspur suitable for bedding or pots. The color is a charming soft salmon pink on well formed compact plants two feet high. An excellent garden plant. The whole plant has the appearance of being almost completely covered with flowers. Excellent for cutting, ideal for bedding or borders. The color will enchant you. **Pkt. 25c.**

ANNUAL CANTERBURY BELL (Angelus Bell)—Annual Canterbury Bell was first introduced last season, but Angelus Bell offered for the first time this year is strikingly an improvement. A beautiful Art Shade of Deep Rose, one of the most attractive colors that we have ever seen in Canterbury Bells. Angelus Bell is a very fine companion to all the blues in your garden. Be sure to try it. **Pkt. 25c.**

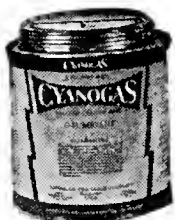
MARIGOLD, GUINEA GOLD—The golden orange flowers are not shaped like ordinary African Marigolds; they are more like Carnations, with their petals loosely placed and waved. They are somewhat smaller than the usual type, but much more beautiful and plentiful. Bushy, blossom covered plants are ideal for borders, and many florists have pronounced Guinea Gold the best Marigold for cutting. **Pkt. 15c.**

SCABIOSA "CATTLEYA" (Grandiflora Flora Plena)—Hardy Annual. "Cattleya" is a rich rosy lilac of the beautiful orchid tone and a new shade for Scabiosa. The flowers are large and attractive. Cattleya will make a valuable addition to this very popular flower. Scabiosa as most flower-lovers know is one of the most satisfactory cutting flowers. This new shade will afford you happiness and a thrill. **Pkt. 25c.**

THE PLANTER'S TIME TABLE

THERE IS SOMETHING TO PLANT EVERY MONTH IN THE YEAR

Variety	When to Plant	Quantity For 100 Feet	Quantity For an Acre	Distance Between Rows	Distance Apart in the Row	Depth to Plant
IN THE GARDEN						
BEANS, DWARF SNAP.....	April to Aug. 15.....	1½ lbs.	75 lbs.	2 to 3 feet.	3 inches	2 inches
“ POLE.....	May and June.....	1 lb.	30 lbs.	4 feet	3 to 4 feet	2 inches
“ DWARF LIMA.....	May, June, July.....	1 to 1½ lbs.	30 to 60 lbs.	3 feet	15 to 18 ins.	1½ inches
BEET, GARDEN.....	March to August.....	2 ozs.	6 to 8 lbs.	15 to 18 ms.	4 inches	1 inch
“ STOCK.....	April, May, June.....	2 ozs.	6 to 8 lbs.	2 to 2½ feet	8 inches	1 inch
BRUSSELS SPROUTS.....	March to July.....	1 oz.	¼ lb.	2½ to 3 feet	18 inches	½ inch
CABBAGE, EARLY.....	Jan. to June, July, Aug.....	1 oz.	6 to 8 ozs.	2½ to 3 feet	18 inches	½ inch
“ LATE.....	April to July.....	1 oz.	6 to 8 ozs.	3 feet	2 feet	½ inch
CARROT.....	March to August.....	1 oz.	3 to 4 lbs.	12 to 24 ins.	3 to 4 ins.	½ inch
CELERY.....	Feb., Mar. and April.....	½ oz.	3 lbs.	2 to 4 feet	6 to 8 ins.	⅜ inch
CORN, GARDEN.....	April to early August.....	Lb., 100 hills	10 to 12 lbs.	3 feet	12 to 18 ins.	1 to 2 ins.
CUCUMBER.....	April to July.....	Oz., 50 hills	2 lbs.	4 feet	4 feet	1 inch
EGG PLANT.....	Feb., Mar., April.....	½ oz.	6 ozs.	3 feet	3 feet	¼ inch
KALE, SPRING.....	Feb. to Apr., Aug. to Oct.....	2 ozs.	8 lbs.	18 to 24 ins.	6 inches	½ inch
“ WINTER.....	Feb., Mar., Aug. to Oct.....	1 to 2 ozs.	4 to 7 lbs.	18 inches	6 inches	½ inch
KOHL RABI.....	March to May, Aug., Sept.....	1 oz.	1 lb.	18 inches	5 to 6 ins.	½ inch
LETTUCE.....	Feb. to May, July to Oct.....	1 oz.	2 lbs.	18 inches	8 to 12 ins.	¼ inch
MUSTARD.....	Feb., Mar., Apr., Sept., Oct.....	1 oz.	5 to 6 lbs.	12 to 18 ins.	3 to 4 ins.	½ inch
MELON, MUSK or CANTALOUPE.....	May and June.....	Oz., 50 hills	2 lbs.	4 to 6 feet	4 to 6 feet	¾ to 1 inch
MELON, WATER.....	May and June.....	Oz., 30 hills	3 lbs.	8 to 10 feet	8 to 10 feet	1 inch
OKRA.....	April, May, June.....	8 ozs.	8 to 10 lbs.	3 feet	1 foot	1 inch
ONION.....	Feb. to April—Aug., Sept.....	1 oz.	5 to 6 lbs.	12 to 18 ins.	3 to 4 ins.	½ inch
PARSLEY.....	Feb., Mar.—Aug., Sept.....	1 oz.	4 to 5 lbs.	12 to 18 ins.	2 to 3 ins.	½ inch
PARSNIP.....	March to July.....	4 ozs.	5 lbs.	18 inches	4 to 6 ins.	½ inch
PEAS, GARDEN.....	Feb. to May.....	2 lbs.	90 lbs.	2½ to 3 feet	3 to 4 ins.	2 to 3 ins.
PEPPER.....	Feb. to July.....	Oz., 1200 plts.	½ to ¾ lb.	2 to 3 feet	18 inches	¼ inch
POTATOES, EARLY.....	March, April.....	½ peck	10 to 12 bus.	3 feet	15 inches	4 inches
PUMPKIN.....	May and June.....	Oz., 20 hills	3 lbs.	8 to 10 feet	8 to 10 feet	1 inch
RADISH.....	Feb. to May, Aug. and Sept.....	2 ozs.	8 to 10 lbs.	18 to 24 ins.	4 to 6 ins.	½ inch
RHUBARB.....	March and April.....	1 oz.	8 to 10 lbs.	Trans. 4 feet	4 feet	½ inch
SALSIFY.....	March to July.....	2 ozs.	6 to 8 lbs.	18 inches	4 to 6 ins.	½ inch
SPINACH.....	Feb. to Apr., Aug. to Dec.....	2 ozs.	12 to 15 lbs.	1½ to 2 feet	4 to 6 ins.	1 inch
SQUASH.....	April to July.....	2 ozs. (hills)	3 to 4 lbs.	3 to 4 feet	3 to 4 feet	1 inch
TOMATO.....	Jan. to July.....	1 oz., 1500 plts.	4 ozs.	4 feet	3 feet	¼ inch
TURNIP.....	Feb., July to Sept. 15.....	1 oz.	1½ to 2 lbs.	2 feet	4 inches	½ inch
ON THE FARM						
ALFALFA.....	Mar., April—Aug., Sept.....	Broadcast	20 to 30 lbs.	Broadcast	Broadcast	¾ to 1 inch
BEANS, NAVY.....	June and July.....	1 lb.	15 lbs.	3 feet	1 foot	2 inches
“ SOY or SOJA.....	April, May, June.....	1 lb.	15 lbs.	2½ to 3 feet	6 inches	1 inch
“ VELVET.....	May and June.....	¼ to ½ bu.	5 feet	2½ to 3 feet	3 to 4 ins.
BROOM CORN.....	May and June.....	2 ozs.	6 lbs.	3½ feet	8 to 10 ins.	1 inch
CLOVER, BURR.....	July to November.....	Broadcast	20 to 25 lbs	Broadcast	Broadcast	½ inch
“ CRIMSON.....	July to October.....	Broadcast	15 lbs.	Broadcast	Broadcast	½ inch
“ JAPAN.....	Feb., Mar. and April.....	Broadcast	20 lbs.	Broadcast	Broadcast	¼ inch
“ SWEET.....	April, May—Aug. to Nov.....	Broadcast	20 lbs.	Broadcast	Broadcast	¼ inch
“ OTHER KINDS.....	Feb., Mar.—Aug. to Nov.....	Broadcast	12 to 15 lbs.	Broadcast	Broadcast	¼ inch
CORN, FIELD.....	April, May.....	Lb., 100 hills	10 to 12 lbs.	3½ to 4 feet	12 to 18 ins.	2 inches
MILLET.....	May, June, July.....	Broadcast	1 bu.	Broadcast	Broadcast	½ inen
OATS.....	Feb. to Apr., Sept., Oct.....	Broadcast	2 to 3 bus.	Broadcast	Broadcast	1 to 2 ins.
PEAS, COW.....	May, June.....	Broadcast	1 to 1½ bus.	Broadcast	Broadcast	2 inches
“ CANADA FIELD.....	Jan., Feb., March.....	Broadcast	1½ bus.	Broadcast	Broadcast	4 inches
“ AUSTRIAN WINTER.....	Sept. to Dec.....	Broadcast	75 lbs.	Broadcast	Broadcast	3 inches
RAPE.....	Feb. to Apr. 15, Aug. to Nov.....	2 ozs.	6 to 8 lbs.	1½ to 2 feet	4 to 6 ins.	½ inch
SORGHUM.....	May and June.....	4 ozs.	5 to 8 lbs.	3½ to 4 feet	4 to 6 ins.	½ to 1 inch
VETCH.....	Feb., Mar.—July to Nov.....	Broadcast	25 to 30 lbs.	Broadcast	Broadcast	2 inches



CYANOGAS

CYANOGAS spells sure-death to Squash Bugs (stink bugs). Applied in the early morning before the dew is off the vines or after irrigating. Cyanogas will kill Squash Bugs quickly and surely. Lb. can 85c; ½ lb. can 55c; not prepaid. (Poison.)

VEGETABLE SEEDS

Dwarf or Bush Beans

One pound will plant a row 100 feet long; about 1¼ bushels to the acre.

HOW TO GROW DWARF or BUSH BEANS—Make the rows 18 inches or 2 feet apart, and drop the beans 4 inches apart in the row. If the soil is warm and loose, plant 2 inches deep; if rather cold and wet, plant only one inch deep. Beans, especially the yellow-podded varieties, will rot very easily if planted when the soil is wet and the atmosphere is cold. If you do not want to run the risk of replanting them, do not plant your beans until the soil is warm. Cultivate often but never when the plants are wet, as this brings on rust. Pick the beans as fast as they become fit to use; this makes them bear longer. **Special Prices to market gardeners. Send your list to us for prices.**

Green Podded Varieties

Prices postpaid. Pkt. 10c; ½ lb. 20c; 1 lb. 35c. Unless otherwise noted.

MONARCH GIANT STRINGLESS GREEN POD

—Matures in 53 days. One of the best for home and market garden; very desirable for canning. Plant large, hardy, heavily productive. Pods medium green, 6 to 6½ inches long; ⅜ to 7/16 inch thick, round; very fleshy, brittle and stringless. Seeds glossy yellowish-brown. A successor to Stringless Green Pod. Pkt. 15c; ½ lb. 25c; lb. 40c.

MONARCH IMPROVED STRINGLESS GREEN-POD

—Matures in 48 days. High quality for home and market garden. One of the favorites through the years. Splendid as a canning variety or for snap beans. Plant large, thrifty, heavily productive. Pods medium green; 5½ inches long, almost ½ inch wide and equally thick; very fleshy, strictly stringless, fine grained, tender. Seeds coffee brown. Pods similar to Giant Stringless Green Pod but a trifle shorter and thicker. Pkt. 15c; ½ lb. 25c; lb. 40c.

STRINGLESS REFUGEE

—Matures in 70 days. Excellent for canning. Young pods particularly valuable for canning and pickling whole. Plant very hardy; extremely productive. Pods medium green, very uniform, 5 to 5½ inches long, round; absolutely stringless, very fleshy, brittle and fine grained. Don't confuse with Refugee or 1,000 to 1 as this variety is stringless.

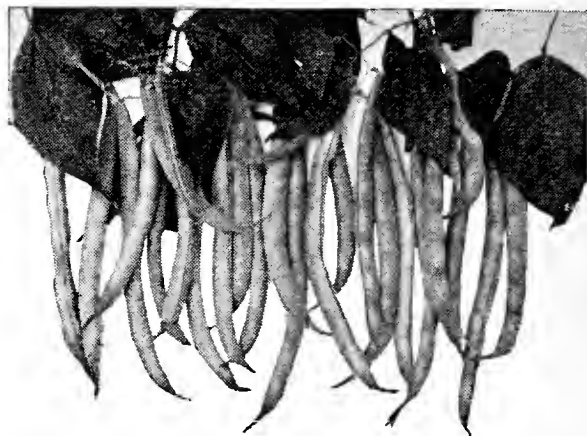
NAVY BEANS

—Matures in 90 days. This is the favored dry bean for baking and for soups. Very small, seed pure white, vines thrifty and very productive. Pkt. 10c; ½ lb. 20c; lb. 35c.

Wax or Yellow Podded

MONARCH DAVIS WHITE WAX

—Matures in 52 days. Well adapted for shipping. Plant large and thrifty and productive. Pods attractive yellow; 6 inches long, straight, ½ inch wide, thick, oval; fleshy and tender when young but become somewhat fibrous and stringy. An excellent dry bean for baking or soups.



Monarch Giant Stringless Green Pod

GOLDEN WAX—Matures in 48 days. A splendid home garden variety; also much used for canning. Plant small, productive. Pods very attractive; golden yellow; 4½ to 5 inches long; ½ inch wide, thick, oval; fleshy, brittle, stringless. Seeds white, splashed with violet-carmine and purple.

CHALLENGE BLACK WAX—Matures in 45 days. The earliest garden bean. Plant small, moderately productive. Pods yellow; 4 to 4½ inches long, ⅜ inch thick, round; fleshy, stringless, brittle, tender. Seeds black.



HOT-KAPS make for an earlier garden. Protect your tender plants from frost. See page 26.



BEANS—(Continued)

Pole or Running Varieties

Prices postpaid, pkt. 10c; ½ lb. 20c; lb. 35c, unless otherwise noted.

CULTURE—One pound will plant 50 hills, 30 pounds per acre. The soil should be mellow, rich and warm. Lay the ground out in hills 4 feet apart each way, and set poles 8 to 10 feet long firmly in the hills before planting the seed. Plant 5 or 6 beans in a hill and cover about 2 inches deep; leave three plants at each pole, and when a few inches high draw a little earth around them as support. Set the poles before the plants have grown to large size; many gardeners consider it an advantage to set the poles when planting, thus avoiding disturbing the small plant or its roots.



See page 25



Creaseback or Blue Lake Beans

MONARCH WHITE CREASEBACK or BLUE LAKE BEAN—Matures in 62 days. A splendid snap bean for home garden and early market. Good climber, heavily productive. Pods light green, 5½ inches long, ½ inch wide, almost as thick; nearly stringless, very fleshy, brittle, tender. Seeds white; excellent for baking. Because of the near-stringless character of this variety it is preferred by many to Kentucky Wonder. **Pkt. 15c; ½ lb. 25c; lb. 40c.**



Don't cultivate Beans when wet—they will rust.

KING OF THE GARDEN LIMA—Matures in 88 days. Climber, heavily productive. Pods 6 inches long, 1¼ inches wide, ⅜ inch thick, usually with 4 or 5 beans. Seeds large, thick, flat, white. An improved strain of large White Lima. Prices at top of this page.

BURPEE'S BUSH LIMA—Matures in 75 days. Plant large, heavily productive. Pods large, 4½ to 5 inches long, 1¼ inches wide, ⅜ inch thick; usually contain 4 large, thick beans. Dry beans large, flat, greenish-white. Prices at top of this page.

SMALL WHITE LIMA—Matures in 78 days. Heavy yielder. Pods 3½ inches long, ⅞ inch wide, ¼ inch thick, with 3 or 4 seeds. Green shell beans small, flat, of splendid quality. This is similar to the Baby Lima, except it is a climber. Prices at top of page.

MONARCH KENTUCKY WONDER WAX—Matures in 67 days. Good climber, very productive. Pods waxy yellow; 8 inches long, ⅝ inch wide, almost as thick as wide; practically stringless, fleshy, brittle, tender. Seeds chocolate brown. Prices at top of this page.

KENTUCKY WONDER (Old Homestead)—Matures in 65 days. Unexcelled for home garden and for market. Excellent climber, thrifty, heavily productive. Pods medium green; 9 to 10 inches long, nearly round and ½ inch in diameter; slightly stringy, very fleshy, brittle, tender. Prices at top of page.

LONDON HORTICULTURAL (Speckled Cranberry)—Ready for snaps in 65 days; green shell beans in 74 days. Splendid for home and market garden. Good climber, thrifty, heavily productive. Pods green, becoming splashed with carmine at green shell stage; 7 inches long, wide, thick, straight, stringless. Prices at top of page.

SCARLET RUNNER—Matures about same as Limas. Good climber. Flowers scarlet, decorative. Pods dark green; 6 inches long, flat oval; fleshy; desirable for snaps and green shell beans. Very attractive as porch or arbor cover. **Pkt. 10c; ½ lb. 25c; lb. 45c.**

Beets

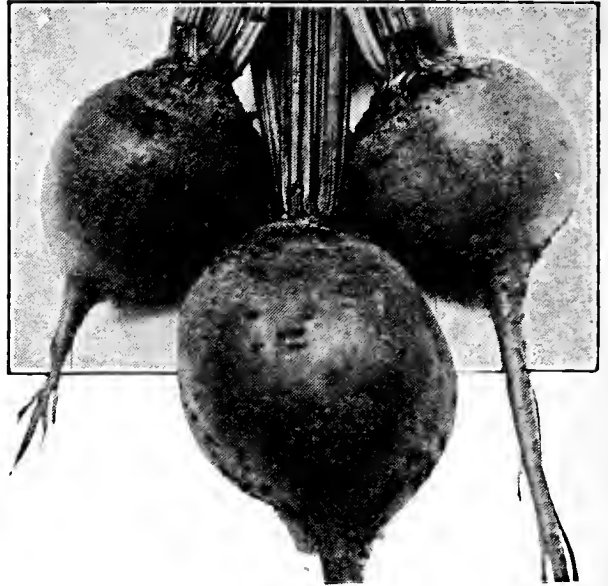
Special prices to market gardeners. Send your list to us for prices.

CULTURE—Well enriched, light soil is best adapted for the culture of beets. Sow in drills 1 foot apart and cover half inch. It is important that the earth be pressed firmly about the seed. When the plants are large enough, thin to 4 inches apart. Use thinnings for greens if desired. For early crop, sow as soon as the ground can be worked, and continue for succession until the first of July. Liberal manuring should be done for Mangels and Sugar Beets. They should stand 10 to 12 inches apart in the rows.

MORSE'S GOOD FOR ALL—Matures in 52 to 55 days. An excellent new variety developed from Detroit Dark Red. Especially fine for canning and pickling whole at 1¼ to 1½ inches in diameter. Roots smooth, even in size and shape, and almost perfectly globular; collar and tap-roots very small; interior deep crimson, free from white zones. If you know the superior excellence of Detroit Dark Red, you will need little introduction to this "baby" strain of the same beet. Unusual evenness of size and shape and almost perfect roundness when small make it the best variety yet for canning or pickling whole.

Pkt. 10c; oz. 20c; ¼ lb. 60c; lb. \$2.00.

MONARCH DETROIT DARK RED—Matures in 52 to 55 days. The standard of excellence in table beets for home and market garden, for shipping, and for canning. Tops uniform, small, slender, erect. Roots globe-shaped; symmetrical, with small collar and small tap-root; very dark, blood-red. Interior very uniform in color, the zones so inconspicuous that the flesh seems to be

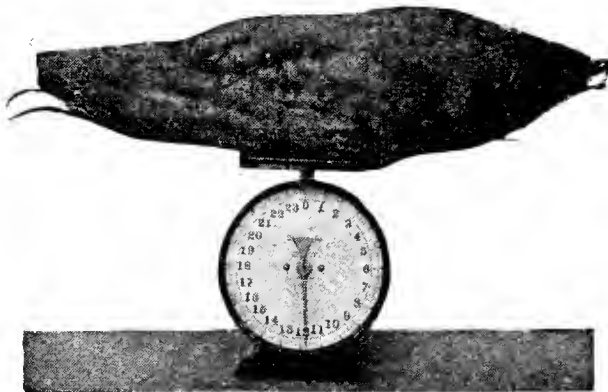


Good for All

one solid ball of deep blood-red meat; remains tender and of highest quality until roots are full grown. Pkt. 5c; oz. 15c; ¼ lb. 35c; lb. 90c.

IMPROVED BLOOD TURNIP—Matures in 60 days. For home and market garden. Tops medium small, but fairly coarse. Roots deep turnip-shaped; dark purplish-red. Flesh deep purplish-red zoned with a lighter shade. Pkt. 5c; oz. 15c; ¼ lb. 35c; lb. 90c.

SWISS CHARD (Sea Kale)—Large Ribbed White. The leaves are broad, somewhat waved, but smooth, and of a medium light yellowish-green. The stalks are broad and flattened, but tender and succulent. Pkt. 5c; oz. 15c; ¼ lb. 40c; lb. \$1.00.



Giant Half-sugar Mangel

Mangel - Wurzels

Quantity Prices
on Application

DANISH SLUDSTRUP—Long, reddish-yellow, grows well above the ground and is easy to pull. Has repeatedly been awarded a first class certificate by Danish Government. Sludstrup is a heavy cropper and dairymen are using it in increasing amounts each year. Oz. 15c; ½ lb. 35c; lb. 50c.

GOLDEN TANKARD—Matures in 95 days. One of the best known and most largely grown yellow mangel, and especially recommended for the dairyman on account of its milk producing properties and the richer quality of the milk. Flesh firm, golden yellow. Can be grown closer than

most varieties. Grows well above ground and easily pulled. Yields well on light soils. Oz. 10c; ½ lb. 40c; lb. 65c.

GIANT HALF-SUGAR MANGEL—Matures in about 90 days. Roots long oval, tapered; grayish-white with rose-colored shoulder; flesh white, rich in sugar. One of the heaviest croppers. Oz. 10c; ½ lb. 40c; lb. 65c.

MAMMOTH LONG RED—The largest of the mangels and the heaviest cropper. Skin red, flesh white, zoned red. Roots very large, long spindle shape, straight and thick; grow ⅓ to ½ out of ground. Oz. 10c; ½ lb. 40c; lb. 65c.

Cabbage

CULTURE—The earliest cabbage may be enjoyed in May from seeds sown in the house or hot-bed. Early Jersey Wakefield matures in 62 days, and later varieties in 90 to 105 days. Both early and mid-season varieties should be started in house or hot-bed, and for late or fall varieties sow the seed in the seed bed in June and early July. Plenty of room should be given plants, at least two feet each way. They need a light and well watered soil, rich in nitrogen. Frequent applications of nitrate of soda or sulphate of ammonia or some other nitrogenous fertilizer will work wonders. Cabbage worms may be kept off by dusting with our Pestroy dust or spraying with arsenate of lead.

FIRST EARLY SORTS

MONARCH COPENHAGEN MARKET (Special Strain)—Matures in 66 days. Distinctly and uniformly early. Splendid for early market and shipment; proving valuable as early kraut variety. Plant small, compact, allowing very close planting; stem short; heads uniformly round; firm; become 6 to 7 inches in diameter; weight 3½ to 4 pounds. Interior clear white and of excellent quality. **Pkt. 10c; oz. 35c; 2 ozs. 65c; ¼ lb. \$1.00.**

EARLY JERSEY WAKEFIELD—Matures in 62 days. Extremely early variety very valuable for home and market garden as well as for shipment. Plants very small and compact, allowing close planting; stem short. Heads firm and conical, usually 7 inches long, 5 inches thick near base; weight 2 to 2¼ pounds. **Pkt. 10c; oz. 35c; 2 ozs. 60c; ¼ lb. 90c.**

EARLY DWARF FLAT DUTCH—Matures in 71 days. Excellent for home and market garden. Plants small and compact; stem short. Heads almost ball-shaped; commonly 7 to 8 inches in diameter, 6 inches deep and weigh 4½ to 5 pounds; firm and of high quality. **Pkt. 10c; oz. 30c; 2 ozs. 55c; ¼ lb. 90c.**

LATE SORTS

DANISH BALLHEAD or HOLLANDER (short stemmed strain)—Matures in 90 to 100 days. The best late cabbage. Plants are medium sized with short stem. Heads large; flattened globe-shape; become 8 to 9 inches across, 6 to 7 inches deep, and weigh 7 to 9 pounds. Very firm and solid, of excellent quality, and keep perfectly in storage until late spring. **Pkt. 10c; oz. 35c; 2 ozs. 60c; ¼ lb. \$1.00.**

GIANT LATE FLAT DUTCH—Matures in 105 days. The best very large, late cabbage; popular for home and market garden and for fall shipment; a good keeper. Heads very large and flat, but deep; become 12 to 14 inches across, 7 inches deep; and weigh 12 to 14 pounds or more; firm and of good quality. **Pkt. 10c; oz. 30c; 2 ozs. 55c; ¼ lb. 90c.**

Golden Acre Cabbage

(Matures in 60 days.)



GOLDEN ACRE CABBAGE—Matures in 60 to 64 days. The earliest round headed cabbage; especially valuable for early market and shipping. Plants very small and compact; stem short; heads uniformly round; firm, commonly 6 inches in diameter and weight 3 pounds. This is similar to Copenhagen Market but is several days earlier, and the heads are smaller. It is as early as Early Jersey Wakefield. Because of the absence of large surplus outerleaves, Golden Acre can be planted closer in the row and the rows nearer, meaning more heads per acre. **Pkt. 10c; oz. 50c; 2 ozs. 85c; ¼ lb. \$1.50.**

Brussels Sprouts

DWARF IMPROVED—A carefully grown strain; very hardy and giving compact, round sprouts of large size and good quality. **Pkt. 10c; oz. \$1.00.**

Broccoli

CULTURE—Plant in open ground in May and June, transplanting later when plants are of sufficient strength and size to place in field. Culture same as for Cabbage or Cauliflower.

ST. VALENTINES—Fine quality, immense header; ready for market early. Heads remain in good condition longer than most varieties. **Pkt. 15c; oz. \$1.00, ¼ lb. \$3.50.**

Carrots

Special prices to market gardeners. Send your list to us for prices.

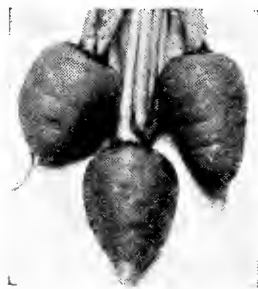
CULTURE—Carrot seed can be sown early and late in Southern Oregon. As soon as the ground can be worked in February carrots may be sown. They like a well cultivated and loamy soil. Use fertilizer liberally. Sow in rows (table varieties) 16 to 18 inches apart, and for field culture sow in drills 18 to 24 inches apart. Cover one-half to an inch deep and firm soil well over seed.

MORSE'S RED CORED CHANTENAY—Matures in 70 days. Distinctly improved over the original Chantenay. You'll marvel at its uniformity and appealing color. The deep orange-red color and smooth symmetrical shape are combined with just the right size to make it irresistibly appetizing. Its beauty is not merely skin deep; it goes clear through to the very center. Roots 5½ to 6 inches long, 2¼ inches thick at the shoulder, tapered, stump-rooted; flesh and core reddish-orange, fine grained and tender; of sweet, delicate flavor. **Pkt. 10c; oz. 20c; ¼ lb. 60c; lb. \$1.75.**



Red Cored Chantenay

MONARCH CORELESS CARROT—Matures in 68 days. One of the best for home garden and early market. Tops small. Roots bright orange; 6 to 7 inches long, 1¼ inches thick; cylindrical; stump-rooted. Flesh bright orange, of highest quality; core inconspicuous. Undoubtedly one of the best carrots grown. Not a tapering variety. Fine for bunching. **Pkt. 10c; oz. 20c; ¼ lb. 50c; lb. \$1.50.**



Early Scarlet Horn

EARLY SCARLET HORN—Matures in 60 days. Popular for early market. Tops small, roots reddish-orange; 3 inches long, 1½ inches at the shoulder, and tapered to about 1 inch thick at the blunt end; flesh, reddish-orange, fine grained, sweet and tender. **Pkt. 10c; oz. 20c; ¼ lb. 45c; lb. \$1.25.**

DANVERS HALF-LONG—Matures in 75 days. Very productive and popular for home and market garden; much

used for shipping. Roots bright deep orange, 6 to 7 inches long, thick, uniformly tapered to the blunt end. Flesh bright orange, crisp and tender. **Pkt. 10c; oz. 20c; ¼ lb. 35c; lb. \$1.00.**

LARGE WHITE BELGIAN—Extensively grown for stock. Grows above ground. **Oz. 15c; ¼ lb. 35c; lb. \$1.00.**

Horse Creek, Calif.
August 30, 1933.

Dear sirs:

I am sending you some samples of cucumbers raised from your seeds. These are the "Improved Long Green Black Spine." Everyone around here says they are the largest cucumbers they have ever seen. I thought you might like to see them. They are a good sample of what your seeds produce. Everything we planted grew. We used Monarch seeds altogether.

Yours sincerely,

John Quigley.

Cauliflower

CULTURE—Cauliflower succeeds well in any soil that will grow good cabbage, but prefers a well enriched soil of loamy character. Sow seed early in February and March in hotbed, transplanting later to cold frame and thence to open ground.

EARLY SNOWBALL—This is the most popular for home garden and market. Produces a good crop and a sure header. **Pkt. 15c; ¼ oz. 65c; oz. \$2.00.**

Extensive Dealers in Field Seeds—Write us for Prices.

Cucumbers

CULTURE—Reasonably good soil that is fully exposed to the sun will raise a good crop of Cucumbers. Every family should be supplied from its home garden, since the fruit is so much better when gathered fresh from the vines as desired for use than it is in the more or less wilted condition in which it is found on the market. Cucumbers are close relatives of melons but mature in about 60 days and may be brought to maturity with little trouble in the home garden. The seeds must be sown after the ground becomes warm, and the plants thinned to three or four to the hill. A very rich soil is the best precaution against insects and the blight. The striped beetle should be kept away from the young plants with liberal applications of powdered arsenate of lead or our SULFO-LEAD DUST. Dust the under side of the leaves with NICO-DUST to kill aphids.



Monarch Imp.
Long Green

MONARCH IMPROVED LONG GREEN—Matures in 72 days. The most popular and one of the best for the home garden; particularly desirable for slicing. Fruits rich dark green; black spined; 12 inches long; 2¼ to 2¾ inches thick; straight; cylindrical; with few seeds. Carry a distinctive flavor, make excellent pickles, and when yellow and ripe the best sweet pickles. **Pkt. 10c; oz. 25c; ¼ lb. 75c.**

DAVIS PERFECT—Matures in 68 days. Splendid dark green slicing variety particularly valuable for shipping. Fruits very dark green; retain color long after picking; white spined; 9 to 11 inches long; 2½ inches thick; somewhat tapered at both ends; very few seeds. Its extremely vigorous growth makes it the best blight resister of the long sorts. **Pkt. 5c; oz. 15c; ¼ lb. 40c.**

EARLY WHITE SPINE—Matures in 60 days. The most popular white spined cucumber for the home garden; extensively grown for shipping. Fruits medium dark green; remain in good condition remarkably long; 7 inches long; 2½ inches thick; slightly tapered; blunt. **Pkt. 5c; oz. 15c; ¼ lb. 40c.**

BOSTON PICKLING—Matures in 60 days. Splendid pickling and slicing sort. Fruits medium dark green; black spined; 6 to 7 inches long; 2½ inches thick; symmetrical; only slightly tapered. **Pkt. 10c; oz. 15c; ¼ lb. 40c.**

LEMON CUCUMBER—Matures in 65 days. Fine for preserves. Yellow in color, fruits round. Fine for salads. Every garden should contain a few hills of Lemon Cucumber. **Pkt. 10c; oz. 25c.**



Davis Perfect

NOTE. If you are pleased with results obtained from seeds purchased of us just drop us a line telling of your success. We are glad to publish letters from our customers and too, we will print pictures sent in to us in the following season's catalog. We want to make our catalog a sort of "chatty" and interesting medium. You can help if you wish.

Celery

FRENCH GOLDEN SELF-BLANCHING—The best celery for early market use. Of yellow color when matured. Brings the top prices. **Pkt. 10c; oz. \$1.10; ¼ lb. \$3.75.**

WHITE PLUME—Best early variety for market gardeners or for family use; of white color. **Pkt. 10c; oz. 35c; ¼ lb. \$1.00.**

Kale

1000 HEADED OR COW KALE—Frequently attains a growth of 6 to 8 feet and produces many of the smooth leaves. Largely used for feeding stock and poultry. **Oz. 15c; ¼ lb. 30c; lb. 75c.**

DWARF CURLED SCOTCH—Long plume-like leaves with edges finely cut. **Pkt. 10c; oz. 20c; ¼ lb. 60c.**

Special prices to market gardeners. Send your list to us for prices.

Sweet Corn

ACCLIMATED SEED

Prices Postpaid (Unless otherwise noted). Pkt. 10c; ½ lb. 20c; lb. 30c; 10 lbs. \$2.75.

GOLDEN EVERGREEN—This new variety comes as a cross between Golden Bantam and Stowell's Evergreen. It carries the flavor of Bantam and has the canning qualities and length of edible period of the Stowell's Evergreen. On the average the grains are somewhat shallower than Stowells and the plant comes to the edible stage 4 days earlier than Stowells. It falls in the late classes of sweet corn, therefore fills a long-felt want on the part of the market gardener who desires a corn to carry on with after the early varieties are done. Because of the very tight husk, Golden Evergreen does not present such easy access to the Corn Ear Worm as do other varieties. Ears 14 to 18 rowed, long and delicious. Length of ears 7 to 8 inches, matures in 85-90 days from planting. Pkt. 15c; ½ lb. 25c; lb. 35c; 10 lbs. \$3.00.



Golden Evergreen

GOLDEN EARLY MARKET—One of the best extra early yellow varieties for home and market garden. Ears have strong husks; 8 to 12 rowed. Kernels golden-yellow, medium, tender, sweet and of good flavor. Very prolific for so early a variety. Matures in 75 days from planting which is 5 days earlier than Golden Bantam. Prices at top of page.

GOLDEN BANTAM—The best known and most favorably known of all the yellow varieties. Stalks often have 2 ears. Ears 8 rowed; kernels broad, with tender hull, sweet, and of exceptionally fine flavor. Used widely for home gardens, by truckers and for canning. Matures in 80 days. All our seed sweet corn is northern grown, acclimated seed. Prices at top of page.

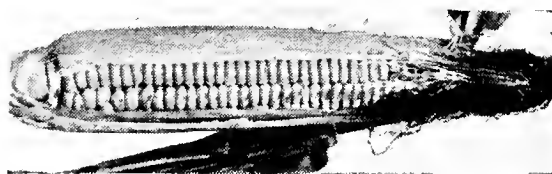
EARLY EVERGREEN—One of the best known and widely used canning varieties, also desirable for market gardeners. A favorite for 50 years. Ears 16 to 20 rowed. Kernels very deep, ivory white, sweet and tender. Matures in 80 days, height of stalk 7 to 8 feet, length of ears 7½ to 9 inches. Pkt. 15c; ½ lb. 25c; lb. 35c; 10 lbs. \$3.00.

STOWELL'S EVERGREEN—The best known late variety. Highly desirable for home and market garden and used extensively by canners. Stalks sturdy and erect; often planted for silage, ears 2½ inches thick, uniform, 16 to 20 rowed. Kernels clear white, deep, medium width, sweet and tender. Holds well in prime condition at eating stage. Matures in 95 days, stalks 8 to 10 feet. Prices at top of page.

POP CORN

JAP HULLESS—Most profitable and popular; short ears, white, pointed kernels. Pkt. 10c; ½ lb. 25c; lb. 35c. Popping corn, lb. 20c, postpaid.

SPANISH PEARL—The largest pop corn grown. New and a coming favorite. Pkt. 10c; ½ lb. 25c; lb. 40c.



Golden Bantam

KOHL RABI

Hardy and easy of culture. Grown from plants the same as cabbage. The Kohl Rabi is a vegetable intermediate between the cabbage and turnip and combines the flavor of both. It should be eaten before growth ceases.

EARLY WHITE VIENNA—Very early; bulb

white; best table variety. Pkt. 10c; oz. 25c; ¼ lb. 85c.

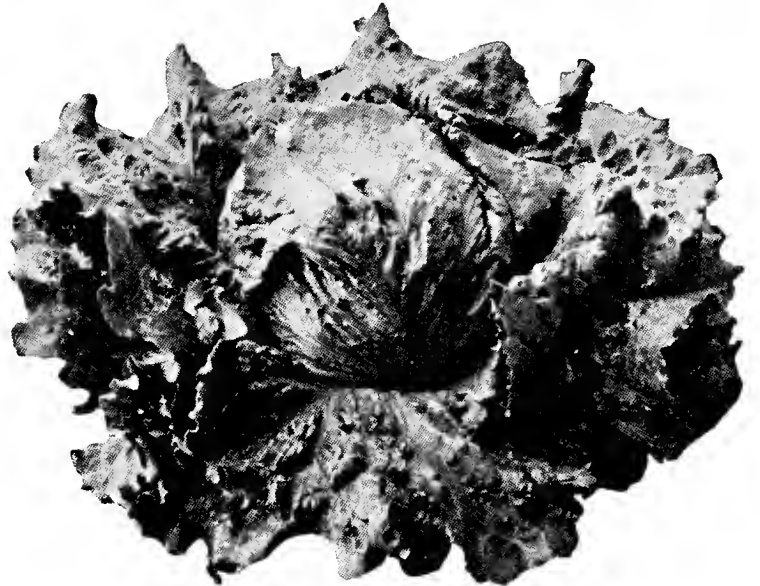
EARLY PURPLE VIENNA—Same as above except in color, which is purple. Pkt. 10c; oz. 25c; ¼ lb. 85c.

Lettuce

Prices on all vegetable seeds postpaid unless otherwise marked.

CULTURE—Lettuce to be at its best should be grown rapidly, hence the soil should be made as rich and friable as possible by liberal manuring and thorough preparation. For general crops sow outdoors as early in the spring as the ground can be worked, in drills 18 inches apart and thin the young plants to four inches apart in the row. As the plants begin to crowd, thin them out and use as required. For the cabbage or heading varieties where large heads are desired, the plants should be thinned ten to twelve inches apart in the row. Varieties marked "A" are particularly adapted for early spring use, those marked "B" for summer culture or late fall planting.

LOS ANGELES or NEW YORK "B"—The most largely used lettuce in the world; grown in immense quantities on the Pacific Coast and shipped to all parts of the country. Plant large, dark green, crisp heading; outer leaves notched and slightly curled on the edges. Large, tightly folded cabbage-like head is well balanced, crisp and sweet. We offer a special strain for early gardening, known as No. 12. It is a trifle lighter in color than other strains of New York but is popular with market or home gardener. **Pkt. 10c; oz. 30c; ¼ lb. 70c; lb. \$2.25.** Matures in 77 days.



Los Angeles Lettuce

HANSON HEAD "B"—Matures in 82 days. One of the most popular home and market garden sorts; very hardy; widely used in all parts of the West. Plant very large with broad, thick, frilled, light yellowish-green leaves, forms rather large, globular, very hard cabbage-like head which is white at the heart, crisp, sweet and tender. It is best known under the name "Nonpariel" in Canada. **Pkt. 10c; oz. 15c; ¼ lb. 35c; lb. \$1.25.**

GRAND RAPIDS "A"—One of the most popular loose leaved varieties. Excellent for early planting outside, and for greenhouse forcing. Plants erect and compact; leaves light green, broad, wavy, curly and heavily fringed at the edges. Handsome sort; very tender and sweet when grown under glass. Early maturing. **Pkt. 10c; oz. 15c; ¼ lb. 35c; lb. \$1.25.**

PRIZEHEAD "A"—An early non-heading sort, very desirable for home garden use. Plants of medium size, crisp and tender; color light brown on a medium green background; leaves crumpled and highly frilled at the edges; of excellent flavor. Matures in 60 days. **Pkt. 10c; oz. 15c; ¼ lb. 50c; lb. \$1.50.**

BROWN DUTCH "B"—A standard mid-season butter head variety of medium size; dark green overlaid with bronze red. Leaves broad, thick and smooth, with plain edges; head firm with buttery yellow interior of good quality. Matures in 78 days. **Pkt. 10c; oz. 20c; ¼ lb. 50c; lb. \$1.50.**



Black Leaf 40

Kills insects on both plants, animals and poultry. Cost of application is low indeed. See page 39.

Mustard

The following varieties make the finest greens when used alone or if combined with cress furnishes a delicious salad. Sow any time in the spring, in rows, and thin out as necessary.

SOUTHERN GIANT CURLED—This is a giant curled leaf of fine quality. **Pkt. 5c; oz. 15c; ¼ lb. 35c.**

WHITE ENGLISH—Light green variety; tender leaves. Seed light yellow and pungent. The commercial mustard seed is this sort. **Pkt. 5c; oz. 20c; ¼ lb. 40c.**

CHINESE MUSTARD—Less pungent than other varieties. A most delicious variety thriving under same conditions as spinach. **Pkt. 5c; oz. 15c; ¼ lb. 35c.**

Leek

The Leek belongs to the onion family. Prized for soups. Cultivate same as onions, but should be hilled up about the neck to blanch it.

LARGE ROEN or AMERICAN FLAG—A large favorite American sort. **Pkt. 10c; oz. 30c; ¼ lb. \$1.00.**

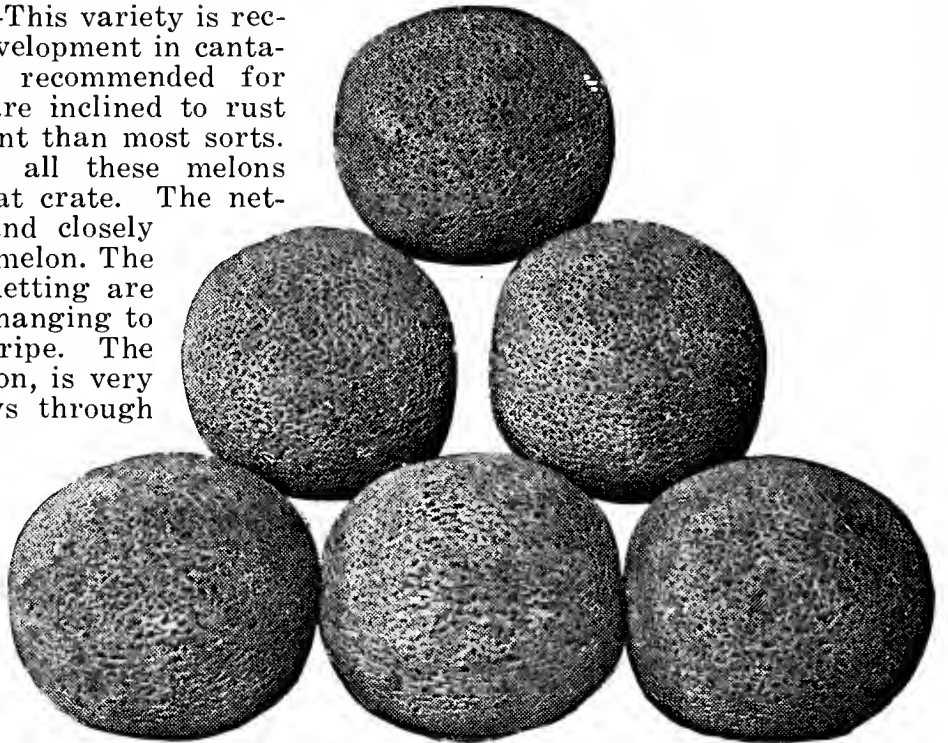
GROW YOUR OWN PLANTS IN YOUR OWN HOTBED

Use Flex-O-Glass (see page 46) the perfect glass substitute. Admits the sun's rays, is weatherproof and waterproof. See page 46.

Muskmelons

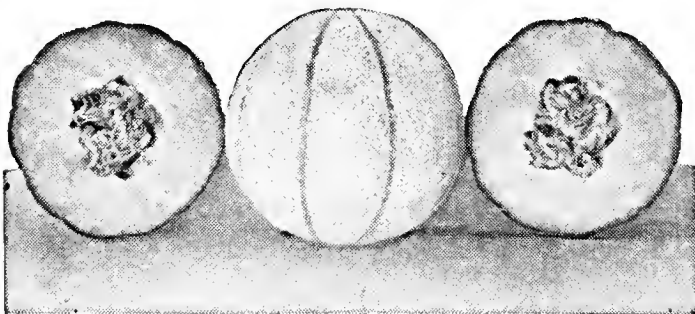
CULTURE—Plant in hills 4 to 6 feet apart each way after danger of frost is past and ground is warm; enrich well with well-rotted manure and plant seeds just under the surface, putting ten or twelve seeds in a hill covering about an inch deep with fine soil firmly pressed down. When the plants begin to crowd and the striped beetles are pretty well gone, thin to four of the most vigorous plants in a hill. Give frequent but shallow cultivation until plants make runners too long for practical work. Rich earth is far preferable to manure, and if manure is used be sure it is well rotted and well mixed with the soil. Use NICO-DUST for melon aphid and for beetles, dust with finely sifted ashes or road dust.

BURRELL'S "SUPERFECTO"—This variety is recognized as the highest development in cantaloupe and is especially recommended for planting where melons are inclined to rust as it is more rust resistant than most sorts. Well grown, practically all these melons pack 12 to the Jumbo flat crate. The netting is well developed and closely laced covering the entire melon. The interstices between the netting are small and bright green changing to orange green when full ripe. The flesh, a rich orange salmon, is very deep and the color shows through the rind where the melon touches the ground a day or two before the melon will slip enabling the careful picker to pick accurately. The quality is unexcelled. The flesh is fine grained, very sweet and spicy. We offer No. 1, first cut seed only. **Pkt. 10c; oz. 20c; ¼ lb. 50c; lb. \$1.50.**



Superfecto

HALES BEST—An outstanding early shipping cantaloupe. Planted extensively in all melon growing sections, for early shipping. Fruits oval; inconspicuous ribbing with heavy netting. Flesh extremely thick, salmon-orange, sweet and of fine quality. An excellent keeper and a good shipper. Seed cavity very small. Earlier than Superfecto, matures in 85 to 90 days. **Pkt. 10c; oz. 15c; ¼ lb. 35c; lb. \$1.25.**



Hales Best

HEARTS OF GOLD—Still a dominating favorite. Quality extremely fine. Well netted, except a narrow stripe between shallow ribs. Holds its color well. Very firm and a good shipper. Deep golden flesh is of the finest quality. Sweet, spicy and distinctly flavored. Hearts of Gold, because of its outstanding flavor will always remain a favorite. No garden is complete without it. Matures in 92 days. **Pkt. 10c; oz. 15c; ¼ lb. 35c; lb. \$1.25.**

EXTRA EARLY HACKENSACK—Matures in 80 days. The standard extremely early large fruited melon for home garden and nearby market. Fruits large, deep but flattened; commonly 6 inches long and 7 inches in diameter; distinctly ribbed; partially netted. Flesh thick; green and juicy. **Pkt. 10c; oz. 20c; ¼ lb. 40c; lb. \$1.50.**

ROCKYFORD—Everyone knows this melon. It is one of the old standbys. **Pkt. 10c; oz. 15c; ¼ lb. 35c; lb. \$1.25.**

Casabas

GOLDEN BEAUTY—Fruits are nearly globular of bright golden yellow color. Flesh is white, very thick and juicy. **Pkt. 10c; oz. 20c; ¼ lb. 50c; lb. \$1.50.**

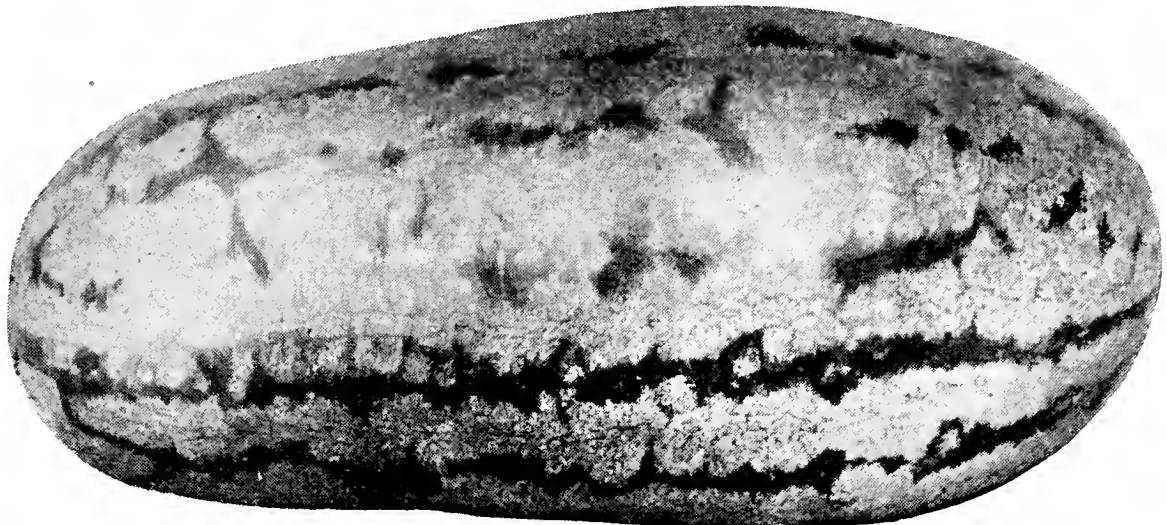
WINTER PINEAPPLE—A casaba that ripens slowly and lasts practically through the winter. Stores like Hubbard squash. **Pkt. 10c; oz. 25c; ¼ lb. 60c; lb. \$2.00.**

Persian (Small variety)—Matures in 115 days. Requires long season to attain perfection; widely grown for market. Fruits globular, skin very dark green; netted. Flesh thick; bright orange; of distinct flavor when melons are fully ripe. **Pkt. 10c; oz. 35c; ¼ lb. \$1.10.**

Watermelons

Special prices to market gardeners. Send your list to us for prices.

Most of Our Watermelon and Cantaloupe Seed Come Direct to us From Growers in the Rockyford District of Colorado.



Burrell's Striped Klondike

BURRELL'S STRIPED KLONDIKE—Friends, here's a new one. We tried it out this past summer and found it delicious. We're passing it on to you. Try it! An excellent shipper and of wonderful quality. Light green, conspicuously striped with dark. In quality it has no superior and its striking appearance advertises it well wherever offered for sale. It brings excellent prices. Size and shape same as brown seeded Klondike. Striped Klondike matures about the same time as our Brown Seeded Klondike. The flavor will strike you as "par-excellence." We feel we are offering you the last word in watermelons in this new variety. If you miss out on its good qualities, don't blame us. **Pkt. 15c; oz. 30c; ¼ lb. \$1.00; lb. \$3.50.**

MONARCH BROWN SEEDED KLONDIKE—(Early maturing strain.) Flesh deep red, very sweet, flavor of the best, rind thin, dark green and tough enough to allow shipping to nearby markets. Stem end square, center full, tapering slightly to the blossom end. A favorite on the Pacific Coast. One of the best flavored melons we have ever offered. Usually weighs about 25 pounds. We offer the earliest maturing strain. You can buy cheaper

seed, but never better. **Pkt. 10c; oz. 25c; ¼ lb. 75c; lb. \$2.25.**

KLECKLEY SWEET or MONTE CRISTO—Early. A most popular home garden variety. Fruits large, oblong, very dark green; flesh bright rich red, crisp, exceedingly sweet; seeds white. Kleckley Sweet has been a favorite for a generation. We believe, however, that Kleckley Sweet does not compare in quality of flavor to either of the Klondike varieties. **Pkt. 10c; oz. 15c; ¼ lb. 40c; lb. \$1.00.**

BLACK SEEDED ICE CREAM—Grown extensively in Oregon and Washington. A splendid shipper, does exceptionally well in any soil which grows melons. Almost round, pink meated, black seeded, a fine keeper. Drought resisting, ripens early. **Pkt. 10c; oz. 15c; ¼ lb. 40c; lb. \$1.00.**

BLACK SEEDED CHILIAN—This melon quickly became popular in California where it originated, and gains favor wherever grown. The medium sized spherical fruits are very dark green, faintly marked with lighter striping. The flesh is crisp, fine grained, and very sweet. It is of an attractive red color. **Pkt. 10c; oz. 20c; ¼ lb. 45c; lb. \$1.25.**

Naphthalene

Naphthalene has proved successful in driving moles out of your garden. Just put a tablespoonful down in the hole and watch the moles "dig out" of your garden. For prices see Insecticides, page 42.

ANTROL Drives ants out of your home. Prices on page 42.

Onions

CULTURE—For the culture of onions the soil should be of loose, rich texture. Bottom land being preferred. Sow $2\frac{1}{2}$ to 3 pounds per acre of seed. Onions can be planted early in the spring as soon as the ground can be worked. Thorough, clean cultivation and thinning during the growing season is necessary.

EARLY SWEET SPANISH (Riverside Strain)—

This strain of Sweet Spanish has been bred up to keeping quality perfection. Originally the Spanish strain of this type did not have the keeping quality, hence seed breeders set to work to include the necessary keeping propensities. Such will be found in our Sweet Spanish. This is a very sweet and early onion. Most of you know it for its extreme high characteristics. Early, mild, excellent keeper, heavy yielder. Increasingly popular with the market and home gardener. Large, yellow, globular, flesh white, very sweet and of pleasing flavor. Desirable for shipping. Our seed comes from the most reliable source and you'll find ours, True-to-type stock. **Pkt. 10c; oz. 30c; $\frac{1}{4}$ lb. 85c; lb. \$2.75.**

YELLOW GLOBE DANVERS—

One of the most extensively used main crop yellow onions for the home garden. Here's what our grower says about our seed: "Our selection and breeding have developed a strain which has the early ripening habit and small neck of the original Danvers and yet is more globular and prolific than the parent type. The bulbs are medium to large sized, uniformly globe shaped and white fleshed, with a crispness and an excellent mild flavor. Highly recommended." Could you ask for more in an onion? **Pkt. 10c; oz. 20c; $\frac{1}{4}$ lb. 60c; lb. \$2.00.**

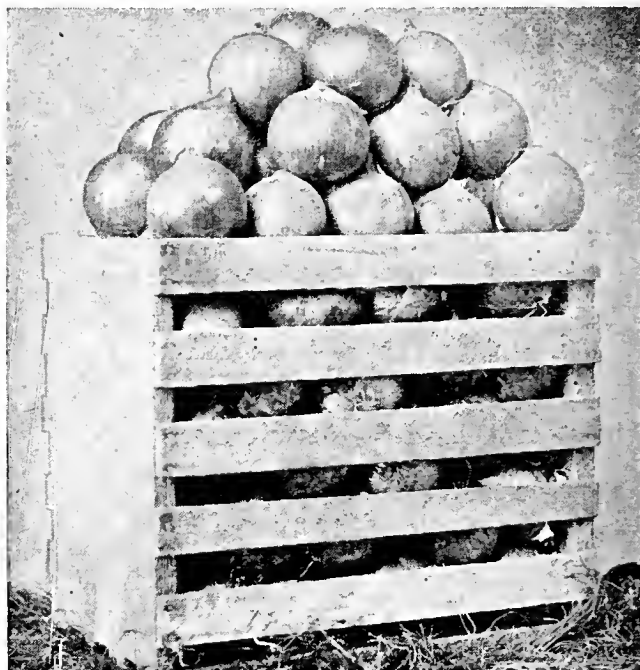
ONION PLANTS

Onion plants afford the opportunity of raising White Bermuda (the onion termed "as sweet as an apple") in your own garden. Two dollars worth of plants will give you 8 to 10 bushels of dry onions for your table or market. See illustration and write-up on inside back cover.

Onion Sets

For the earliest green onions use onion sets, planting them about 2 inches apart in the row. Dry onions can be grown from sets, but it will be found much less expensive if grown from seed. We can furnish Yellow Strassburg sets at **30c per quart postpaid; 5 quarts, \$1.25; 10 quarts and up, 20c per quart, postpaid.**

Note—We cannot supply Sweet Spanish onion sets.

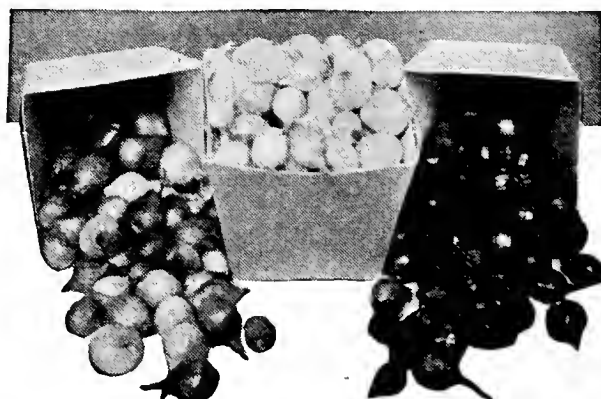


Early Sweet Spanish (Riverside Strain)

PRIZETAKER—The most widely grown of the yellow types. Enormously productive, widely grown for shipping. Bulbs large, globular; skin thin, glossy and of a lighter shade of yellow than Danvers; flesh coarse but mild and sweet. **Pkt. 10c; oz. 20c; $\frac{1}{4}$ lb. 60c; lb. \$2.00.**

SILVERSKIN or WHITE PORTUGAL—The most popular white onion for either pickling or for dry, mature bulbs and for bunching onions from seed. Bulbs of medium size; flat but fairly deep; pure white; flesh fine grained, firm and hard. A splendid keeper. **Pkt. 10c; oz. 20c; $\frac{1}{4}$ lb. 60c; lb. \$2.00.**

CRYSTAL WHITE WAX—A most attractive onion. An off-spring of White Bermuda. Pure white in color, being waxy in appearance. Largely grown for the market but highly recommended to the home gardener. **Pkt. 10c; oz. 30c; $\frac{1}{4}$ lb. \$1.00; lb. \$3.00.**



Peas

CULTURE—One pound will sow 100 feet. Light, moderately rich soil is best for this crop. Sowing of first early varieties should be made in October, and the other varieties in the early spring. Peas are sown in single or double rows from 2 to 6 feet apart, according to the variety or height to which they attain. Dwarf varieties are planted 2 feet apart, and those of medium sorts 3 feet to 4 feet apart. Tall varieties from 5 to 6 feet apart.

Early Varieties—Dwarf

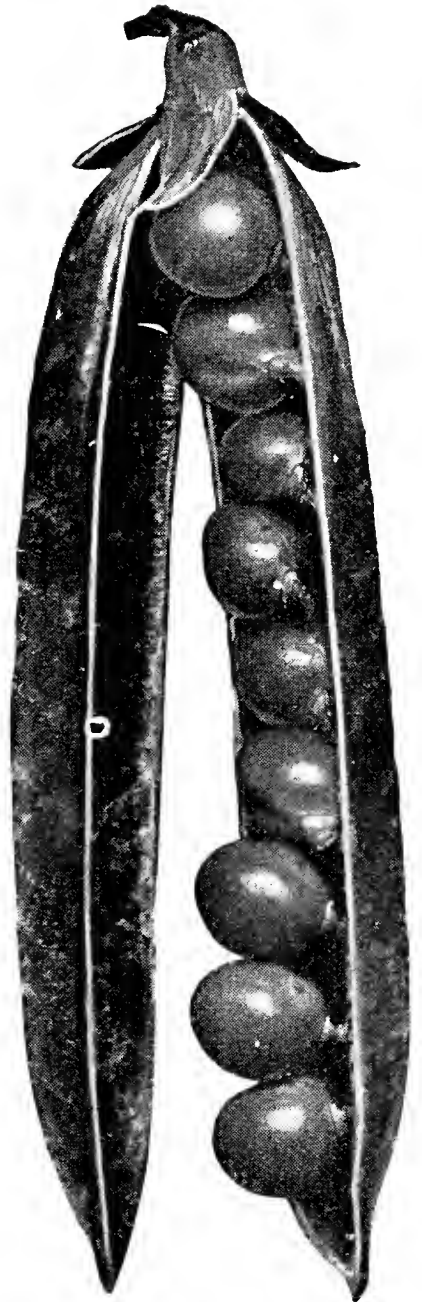
LAXTON'S PROGRESS—Matures in 60 days. Splendid variety for home, market garden and shipping. Vines dwarf; 20 inches tall; dark green; prolific. Pods handsome; dark green; very large for dwarf variety; fully 4 inches long, $\frac{3}{4}$ inch wide, plump; tapered at end. Seeds large, wrinkled; cream; interior yellow. Laxton's Progress is an improvement over Laxtonian. More prolific, larger pods with immense peas, filling the pods to bursting. If you want the maximum from your pea crop, plant Laxton's Progress. Our seed comes to us from the West's most reliable grower. Germination is high and you'll find our stock positively, True-to-Type. **Pkt. 10c; $\frac{1}{2}$ lb. 20c; lb. 35c, postpaid.** Quantity price on application.

LAXTONIAN—Matures in 65 days. While not quite as early as Laxton's Progress this old favorite is earlier than most early sorts and by far superior to most. Dwarf, large-podded, this variety is generally considered the best of its class. The blue-green pods are often more than 4 inches long and contain 8 dark green peas of finest flavor. It is especially recommended for home garden use. Seeds are large, wrinkled; green and cream in color. **Pkt. 10c; $\frac{1}{2}$ lb. 20c; lb. 30c, postpaid.** Quantity price on application.

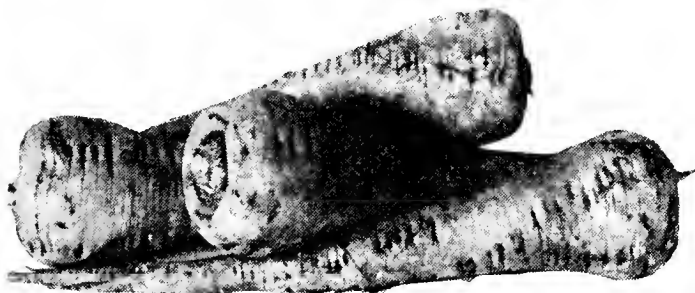
LITTLE MARVEL—Matures in 62 to 65 days. Most desirable for the home garden. Dark green vines, 18 to 20 inches tall, grow vigorously and are laden with pods 3 inches long, blunt ended and packed with peas of medium size. These are temptingly dark green, and very tender and sweet. Seeds are squarish, wrinkled and green in color. **Pkt. 10c; $\frac{1}{2}$ lb. 20c; lb. 30c, postpaid.** Quantity price on application.

Main and Late Crop Varieties

GRADUS—Matures in 74 days. Splendid early large podded sort for home market gardens. Vines medium green; 3-3 $\frac{1}{2}$ feet tall. Pods borne singly; attractive medium green; 4 inches long, $\frac{7}{8}$ inch wide, plump, well filled; tapered at end. Seeds large, wrinkled; cream and green. **Pkt. 10c; $\frac{1}{2}$ lb. 20c; lb. 30c, postpaid.**



Laxton's Progress



Hollow Crown Parsnips

LONG SMOOTH or HOLLOW CROWN—A standard table sort; the best and most productive for field culture. **Pkt. 5c; oz. 15c; $\frac{1}{4}$ lb. 30c; lb. 85c.**

STRATAGEM (Improved)—Matures in 77 to 80 days. Vines about 2 $\frac{1}{2}$ to 3 feet tall, bears large pods of the Telephone type. This is an outstanding type of everbear-

Parsnips

ONE OUNCE of seed will sow 200 feet of drill. 5 pounds will plant an acre. This crop requires a very rich soil. Sow in drills 18 inches apart and one-half inch deep and thin to 8 inches in the row.

ing variety. Stratagem is an ideal late variety to follow the earlier ones in the home garden. Large squarish seeds are wrinkled and green. Delightful flavor and a very productive sort. **Pkt. 10c; $\frac{1}{2}$ lb. 20c; lb. 35c, postpaid.**

TALL TELEPHONE—Vines 4 to 4 $\frac{1}{2}$ feet tall. Heavily loaded with very large, well formed pods, often 5 to 5 $\frac{1}{2}$ inches long. Light yellowish-green and normally contain 8 to 10 very delicious, large peas. **Pkt. 10c; $\frac{1}{2}$ lb. 20c; lb. 30c, postpaid.**

Peppers

Special prices to market gardeners.
Send your list to us for prices.

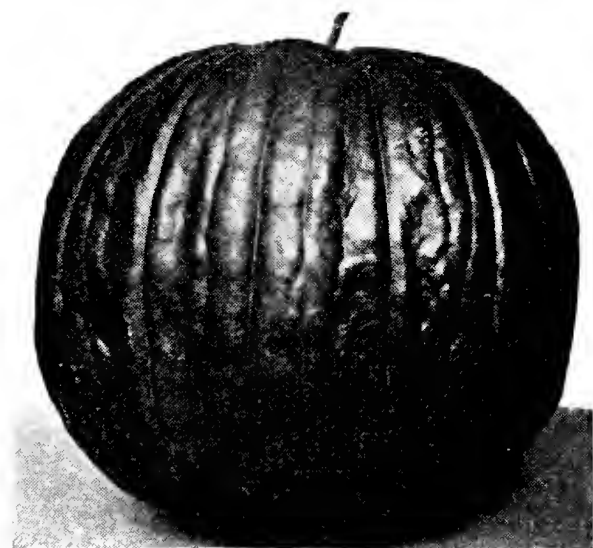
SOW the seeds early in hotbeds; or later, when the weather becomes warm, in open beds. Transplant when two or three inches high to a warm, mellow soil in rows 18 inches apart and a foot apart in rows. Sheep Guano and hen manure are excellent fertilizers and will greatly increase the yield.

CALIFORNIA SWEET WONDER—Matures in 72 days; large green fruits available practically as early as Ruby King. This is the standard of excellence in sweet peppers; much used, particularly by market gardeners and shippers. Plant thrifty, upright, heavily productive over a long season. Fruit handsome, very large, very smooth and regular; commonly $4\frac{1}{2}$ inches long and $3\frac{1}{2}$ to 4 inches through; deep green, becoming bright crimson; flesh extremely thick and firm, sweet throughout and of distinct flavor. **Pkt. 10c; oz. 80c.**

LARGE BELL or BULL NOSE—Matures in 55 to 60 days. An old favorite. Sweet with mildly pungent ribs. The earliest, most prolific large fruited pepper. Plants small, upright. Fruits 3 to $3\frac{1}{2}$ inches long, 3 inch thick, blocky; slightly crumpled; deep green becoming scarlet red. **Pkt. 10c; oz. 60c.**

CHINESE GIANT—Matures in 80 days. The largest sweet pepper. Fruits $4\frac{1}{2}$ to 5 inches long and of equal diameter; roundish, blunt at the ends; somewhat crumpled; deep green, mild and sweet throughout. **Pkt. 10c; oz. 65c.**

LONG RED CAYENNE—Matures in 70 days. A leading sort for use in pickling and for drying. Very pungent, fruits 5 inches long $\frac{1}{2}$ inch thick, tapered. **Pkt. 10c; oz. 70c.**



Connecticut Field Pumpkin

See page 20 for prices on Riverside Giant Rhubarb Plants.



California Wonder Pepper

Parsley

ONE OUNCE of seed will sow 100 feet of drill. Sow thinly in drills 1 foot apart and thin out the plants to 3 or 4 inches. The seed germinates slowly, sometimes three or four weeks passing before the plants appear.

FINE DOUBLE CURLED—Fine dwarf; crimped leaves. **Pkt. 10c; oz. 15c; ¼ lb. 35c.**

Pumpkins

CULTURE—Enormous pumpkins may be grown on the fertile soils of Southern Oregon and Northern California. Plant the seed in the open ground when it is well warmed and after danger from frost is past. Plant in hills about 8 feet apart; 3 to 4 pounds of seed will plant an acre and 8 ounces will plant 100 hills. Do not plant near squashes, as they are likely to mix.

CONNECTICUT FIELD—The standard field pumpkin, grown for pies, canning and stock feed. Fruits very large, commonly 10 in. long, 12 inches in diameter and weigh 20 lbs., sometimes much larger; skin smooth, deep orange-yellow; shell thin, hard; flesh thick, coarse, sweet and deep yellow. **Pkt. 10c; oz. 15c; ¼ lb. 45c; lb. \$1.00.**

WINTER LUXURY or PIE—Very popular home and market garden sort; about in season with New England Pie. Fruits almost globular, commonly 7-8 inches long and 8-9 inches in diameter and weigh 8 pounds; skin light orange; not furrowed but with a netted, russet appearance; rind thin and easily cut; flesh very thick, yellow, firm and of splendid quality. **Pkt. 10c; oz. 20c; ¼ lb. 45c; lb. \$1.25.**

NEW ENGLAND or SWEET SUGAR—A handsome and productive small pumpkin; skin orange, flesh yellow, fine grained, very sweet. This is the famous New England Pie Pumpkin. **Pkt. 10c; oz. 15c; ¼ lb. 35c; lb. \$1.00.**

Buy the Best Seed; It's the Cheapest in the Long Run.

Radishes

Special prices to market gardeners. Send your list to us for prices.

CULTURE—To secure radishes with crisp, tender flesh, grow them quickly in rich, loose soil, and gather them before reaching full size. Frequent plantings should be made for successive crops, so that a supply of fresh, tender radishes may be had at all times.



Crimson Giant

LONG WHITE ICICLE—Matures in 27 days. Decidedly the best early white variety and considered by many the standard of excellence in radish. Particularly popular in home and market gardens. Tops small, roots long, tapered; very white; brittle as ice; of splendid quality until 5-6 inches long; mild and of splendid flavor. **Pkt. 5c; oz. 15c; ¼ lb. 35c; lb. 85c.**



Early Scarlet Turnip

CRIMSON GIANT—Matures in 29 days. Superior home and market garden sort. Tops medium small. Roots spherical to slightly top-shaped; deep crimson; the largest of the early turnip rooted radishes; commonly attain diameter of 1½ inches before becoming pithy; of unexcelled quality. **Pkt. 5c; oz. 15c; ¼ lb. 35c; lb. 90c.**

EARLY SCARLET TURNIP—Matures in 23 days. Very early sort, superior and equally valuable for out of door culture and for forcing. Tops small, ideal for bunching. Roots slightly elongated globe shape; 1¼ inches long when ideal for use; with slender well defined tap root; uniform rich bright scarlet; flesh white, crisp and of splendid quality. **Pkt. 5c; oz. 15c; ¼ lb. 35c; lb. 80c.**

EARLY SCARLET TURNIP (White Tipped)—Matures in 25 days. Handsome, popular variety of outstanding quality; much used in home and market gardens. Tops small, roots deep turnip shape, almost globular, with slender tap root; bright scarlet with well defined white area about the tip; remain crisp and of splendid quality until 1¼ inches in diameter or greater. **Pkt. 5c; oz. 15c; ¼ lb. 35c; lb. 80c.**

LONG SCARLET—Matures in 26 days. Standard home and market garden sort. Tops small. Roots long, tapered; become 4-5 inches long and ¾ inch thick at shoulder; bright carmine red. **Pkt. 5c; oz. 15c; ¼ lb. 35c; lb. 80c.**

ANTROL will solve the ant problem. Keep these pests out of your home with ANTROL. See page 42.



Spinach

CULTURE—Of easy culture and very profitable. Spinach may be planted in the fall or early spring. In our mild climate winter sowing is practical with good results. Sow 8 pounds per acre as a field crop or 1 ounce to 100 feet in the home garden. The richer the soil the larger and better the leaves. Use a top dressing of Sulphate of Ammonia after plants have started to grow.

BLOOMSDALE SAVOY—Matures in 40 days. The standard very early sort for home and market garden. Plants upright and compact, attain height of 10-12 inches and spread 12-15 inches. Leaves large; blistered and crumpled; rich deep, glossy green; of splendid quality. **Pkt. 5c; oz. 10c; ¼ lb. 25c; lb. 60c, postpaid.**

GIANT THICK LEAVED—Matures in 43 days. Decidedly the best of the round seeded thick leaved sorts. Because of the enormous

yield, long standing character, and the deep green color and smooth character of the leaves, this is highly recommended for canning as well as for home and market garden. Leaves very large, thick broad arrow-shaped with rounded tip. Easy to wash free of sediment. **Pkt. 5c; oz. 10c; ¼ lb. 25c; lb. 60c, postpaid.**

NEW ZEALAND—Distinct from other kinds of spinach and particularly valuable for culture in hot dry weather. Seeds comparatively large and nut-like. Plants very large and spreading; leaves numerous, small, triangular, thick, deep green. The tender leafy shoots are gathered repeatedly. A perennial sort. **Pkt. 5c; oz. 15c; ¼ lb. 35c; lb. \$1.00.**

New Low Prices on Field Seeds. Drop us a line for Prices.

Squash

Special prices to market gardeners. Send your list to us for prices.

CULTURE—Do not sow squash seed until all danger of frost is past. Put a spadeful of well rotted manure in each hill and dig it in well. Sow 8 to 10 seeds in a space one foot in diameter and later thin to the strongest three plants. Eight ounces of seed will plant 100 hills; 2 to 3 pounds per acre. In gathering winter squash it is important to keep the stems from being broken off.



Banana Squash

BANANA or SWEET POTATO—An excellently flavored winter squash. Fruit commonly 18 to 24 inches long and about 7 inches in diameter. The skin is gray-blue and not so hard as that of the Hubbard, while the flesh is fine grained, deep yellow, dry, sweet and of prime quality. Good keeper. **Pkt. 10c; oz. 20c; ¼ lb. 50c; lb. \$1.50.**

TABLE QUEEN or DES MOINES—Very early; extremely prolific; one of the most popular for home and market garden and shipping. Fruits pointed acorn shape; 5½ inches long and 4 inches through; uniformly ridged; skin smooth, dark green; shell thin; flesh light yellow, bakes dry and sweet. Vines yield prolifically and fruit matures in about 100 days. Fine for baking and serving in halves. **Pkt. 10c; oz. 25c; ¼ lb. 45c; lb. \$1.50.**

IMPROVED WARTED HUBBARD—Standard winter squash for home, market and shipping. Fruits medium large; commonly 9-10 inches through; globular, dark bronze green, moderately warted; rind very hard and strong; flesh very thick, deep orange-yellow, fine grained and dry; of splendid quality. **Pkt. 5c; oz. 15c; ¼ lb. 35c; lb. \$1.25.**

YELLOW SUMMER CROOKNECK—Well known. Fruit long, skin very much warted; bright golden yellow. **Pkt. 5c; oz. 20c; ¼ lb. 45c; lb. \$1.25.**

WHITE BUSH SCALLOP—A very early variety with flat, white scalloped squashes 4 to 6 inches in diameter. Vine bushy in habit and dwarf. **Pkt. 5c; oz. 20c; ¼ lb. 45c; lb. \$1.25.**

MAMMOTH CHILI—The largest squash. Used for stock feeding. Immense size means heaviest yield per acre. **Pkt. 10c; oz. 20c; ¼ lb. 50c; lb. \$1.50.**

Turnips

ONE OUNCE will seed 100 feet; 2 pounds will sow an acre. Turnips do best in highly enriched soil of light, sandy texture. Sow in drills from 12 to 15 inches and thin early to 8 or 9 inches apart.

PURPLE TOP WHITE GLOBE—Matures to table size in 55 days. Full size in 70 days. The standard home, market garden and shipping sort for table use. Tops medium large, compact, strap leaved. Roots globular, smooth; bright purplish-red above, white below; become 5-6 inches in diameter; flesh white, firm; fine grained and tender when young. **Pkt. 5c; oz. 15c; ¼ lb. 25c; lb. 60c.**

PURPLE TOP STRAP LEAVED—Ready for the table in 45 days. Very important home and market garden sort. Tops small, erect, compact. Roots flat, become 5 inches in diameter and half as thick; purplish red above and white below; flesh clear white, fine grained, mild. **Pkt. 5c; oz. 15c; ¼ lb. 25c; lb. 60c.**



Purple Top Strap Leaved

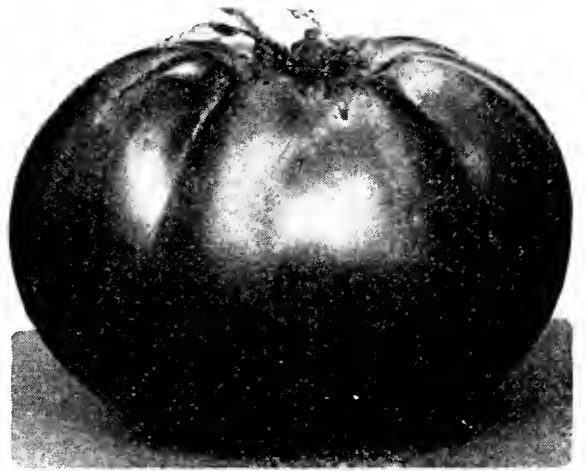
WHITE EGG—Ready for the table in 55 days. Tops erect, fairly compact; cut-leaved. Roots white, smooth, grown one-half above ground, egg shaped, 3 inches long; flesh white, firm grained, sweet and tender. **Pkt. 5c; oz. 15c; ¼ lb. 25c; lb. 65c.**

Tomatoes

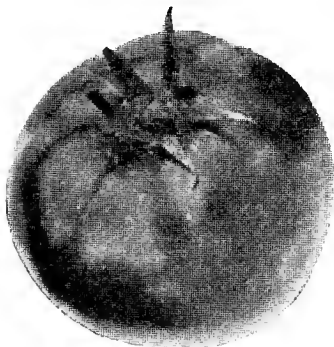
Our Tomato Seed is grown by a specialist who grows only tomatoes. Our seed is the best grown.

CULTURE—Sow the seed in hotbeds in early March, moving plants to cold frame when of suitable size. Harden off in cold frame until conditions are right in the field for their transplanting. Too frequent watering is harmful, especially spraying the plants. Just a moderate amount of water should be applied at the roots at regular intervals.

PRITCHARD or SCARLET TOPPER—A scarlet, self-topping, disease-resistant variety originated by the late Dr. F. J. Pritchard, of the United States Department of Agriculture, in 1931. It is a cross between Marglobe and Cooper's Special and has inherited fine qualities from each parent; heavily productive. Fruits large, smooth, globular, solid, with thick walls and cross-sections; color light scarlet, not as intense as could be desired. Highly valuable for market garden use and for long distance shipping. **Pkt. 15c; oz. 75c; ¼ lb. \$2.00.**



Pritchard or Scarlet Topper



Break O' Day

BREAK O' DAY—Another of Dr. Pritchard's introductions. A cross of Marglobe and Marvana, resistant to wilt and nail-head rust. Plant light, of open, spreading habit, with medium foliage; early and very prolific. Fruits medium

large, orange-red, uniform, globe-shaped, smooth; walls not as thick as in Marglobe. Very early, maturing just 4 days later than Earliana. Very desirable for early market. Fruits are free from cracking around stem end and of very uniform shape. **Pkt. 10c; oz. 70c; 2 ozs. \$1.20; ¼ lb. \$2.00.**

MARGLOBE—Our stock of Marglobe is bred directly from seed originated by the U. S. Department of Agriculture. This variety has come into wide use by truckers and shippers, and in some sections by canners. Plant vigorous, with heavy foliage, resistant to wilt and nail-head rust; moderately productive. Fruits medium large, nearly globular, smooth, solid, with thick walls and cross-sections of fine quality. **Pkt. 10c; oz. 50c; ¼ lb. \$1.50.**



SNAROL kills snails, cut-worms, slugs and grasshoppers. The only successful cure for these insects. See page 39 for prices.

EARLIANA (Special Market Gardener Strain)

A first early sort, widely used for home gardens, and by truckers. Ours is one of the several excellent strains of this important variety which has been bred for thicker, smoother fruits. Vine is open, spreading, medium small. Fruits flattened, medium sized, form, bright red, quite smooth. **Pkt. 10c; oz. 50c; ¼ lb. \$1.35.**

CHALK'S EARLY JEWEL—A second early sort for home gardeners and truckers, also good for canning. Plant medium, with open growth; prolific. Fruits medium large, smooth, scarlet, flattened globe-shaped. **Pkt. 10c; oz. 45c; ¼ lb. \$1.25.**

Small Fruited Varieties

YELLOW PEAR—Pkt. 10c; oz. 65c; ¼ lb. \$2.

YELLOW PLUM—Pkt. 10c; oz. 65c; ¼ lb. \$2.

HUSK TOMATO OR GROUND CHERRY—

Small, round, yellow fruits about half an inch in diameter, enclosed in a thin husk. Very deliciously sweet. Excellent for preserves. **Pkt. 10c; oz. 65c.**

GET INTO THE EARLY MARKET WITH TOMATOES

Cover them with **HOT-KAPS** to protect from frost and cold weather. For prices see page 26.

Rutabagas

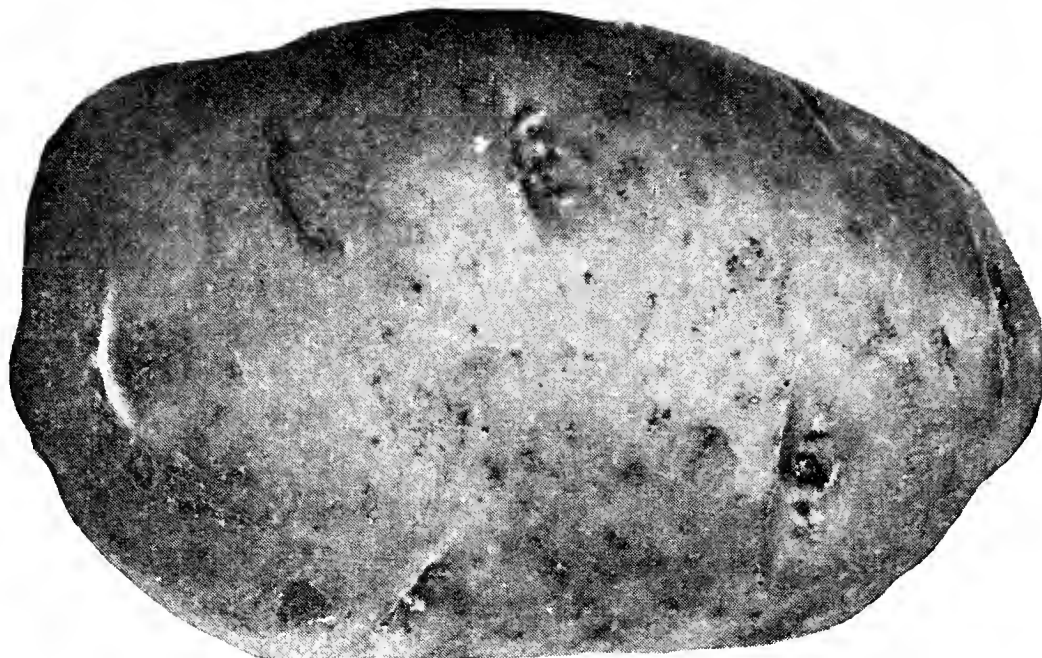
AMERICAN PURPLE TOP—One of the best and most popular varieties, with yellow flesh. Good for stock feeding. **Pkt. 5c; oz. 15c; ¼ lb. 25c; lb. 75c.**

LARGE WHITE OR SWEET RUSSIAN—A very large variety, with white skin and flesh which is tender and sweet. **Pkt. 5c; oz. 15c; ¼ lb. 25c; lb. 75c.**

BUY THE BEST—WE DO.

Seed Potatoes

WE OFFER CERTIFIED SEED POTATOES IN ALMOST ALL VARIETIES



Early White Gold
"The Earliest Potato Grown"

EARLY WHITE GOLD "Earliest White Potato Grown"—A week to ten days earlier than Bliss Triumph, Irish Cobbler, Sunrise or Beauty of Hebron. Ten days to two weeks earlier to market frequently means the difference between a decent profit and a possible loss. White Gold Potatoes were developed from a potato seedling, by George Kremer of Itasca County, Minnesota. Our seed came to us from the Minnesota grower, being introduced into southern Oregon two years ago. White Gold is a white potato with shallow eyes, perfect skin characteristics and fine cooking qualities. Its chief claim to notoriety, aside from its productiveness and flavor quality is its earliness. Here is what Mr. Hugh Porter of Central Point, Oregon, has to say about White Golds. "I planted White Gold on the 11th of April and harvested my first new potatoes on July 8th. By proper watering I could have harvested one week earlier, making it 80 days from planting to the first digging. My White Golds were planted right next to Earliest of All and Bliss Triumph which were ready 10 days later." The seed we offer you is grown in southern Oregon therefore fully acclimated. Our seed crop promises to be very short this year so order early. **10 lbs. \$1.50, postpaid, to third zone.** Write for quantity prices.

QUICK LUNCH—Until White Gold came into the picture, Quick Lunch was our earliest maturing potato. However, Quick Lunch will always continue to be a favorite. It is a pinkish tinted potato, very early and productive. It is of better keeping quality than the average of extra early tubers, and of excellent cooking habit. Comes

THE VARIETIES listed below are offered you in the belief that they are the best adapted to our climate and soil. There are many varieties of potatoes being offered today that do not fulfill expectations at harvest time. We know you will find any of the varieties listed below satisfactory in yield, quality and saleable value.

POTATO prices fluctuate to such an extent that we doubt the advisability of quoting prices this early in the season. Prices at all times are quoted subject to market changes. When in the market we ask you to drop us a line stating the variety and quantity you desire and we will gladly and promptly quote prices.

into the market at a time when prices are still strong. **10 lbs. \$1.00, postpaid to third zone.** Write for quantity prices.

EARLY SUNRISE—This variety, while not quite as early as Quick Lunch and White Gold, will outyield both in most soils. Sunrise is a potato of great value as an early cropper and preferred by many. Of flattened round shape, it is of excellent quality, will mature in 90 days from time of planting. **10 lbs. \$1.00, postpaid to third zone.** Write for quantity prices.

If interested write us for prices on late potatoes.

RIVERSIDE GIANT RHUBARB PLANTS

Medium divisions, each postpaid.25c
 Large Divisions, each postpaid.35c



Our plants are from two-year-old stock being divisions and not seedling plants. They will produce earlier for you.

RIVERSIDE GIANT RHUBARB

Has stood the test of time, crisp, tender, free from stringiness, good color, delicious, distinctive flavor. The skin is so thin it disappears in cooking. Has every good characteristic a commercial rhubarb should possess. Yields of over 35 tons per acre are common.

commercial rhubarb should possess. Yields of over 35 tons per acre are common.

Grass Seeds

Quality Distinguishes Our Grass Seeds.

Sudan Grass A wonderful quick-growing Summer Hay Grass. An annual with short fibrous roots that are killed by frost. Because of this characteristic, Sudan Grass will never become a pest as will Johnson Grass. Its greatest value is for hay, which is well liked by stock—the entire plant, leaves, stems and heads, is eaten. Sudan will give at least two cuttings per acre and we have seen it pastured after the second cutting is off. It stools out wonderfully after the first cutting. The hay is equal to timothy in feed value and superior to millet. Sudan is strongly drought-resistant. Sow it after the ground becomes warm, either broadcast or in rows two feet apart and cultivate like corn. When sown in rows it grows six to seven feet high; when sown broadcast it grows four to five feet high. When sown broadcast the hay is finer. Cut Sudan when in bloom, for at that stage the feeding value is highest; yet there are few grasses so little injured by standing beyond the proper stage for cutting. Sudan grass may be profitably grown with Soya Beans or Cow Peas. Being of erect growth it supports the legumes and makes cutting easier and allows them to cure more quickly; the mixture will also give a better balanced ration than either feed alone. When grown with cow peas or soy beans, make the sowing of Sudan grass after the peas or beans are planted and covered. Almost any soil from heavy clay to light sand, will grow Sudan grass. Sow 5 to 6 pounds to the acre in two-foot rows; 20 to 25 pounds broadcast. **By mail postpaid, lb. 20c; 5 lbs. 60c.** Write for quantity prices.

ORCHARD GRASS—The greatest Pasture and Hay Grass. A very vigorous grower and yields large crops of excellent and nutritious hay, as well as having special value as a pasture grass, furnishing good grazing from early spring till winter. It responds quickly after cutting or grazing for in a few weeks of seasonable weather it is ready for grazing again. It is particularly well adapted for pastures, and has the further advantage of growing well in shade, giving excellent results when sown in groves of trees or in orchards. It adapts itself to a variety of soils, provided they are well drained, but succeeds best on loamy uplands or moderately stiff soils, although it does quite well on soils that are inclined to be sandy. Deep-rooted perennial grass, but does not form a true sod, as it grows in tufts, so it is recommended that other grasses be sown with it. A mixture of 15 pounds of Orchard Grass, 12 pounds of Tall Meadow Oat Grass and 8 pounds of Red or Alsike Clover has proved very satisfactory, is recommended for hay and pasture. When sown alone, plant 30 to 35 pounds per acre. In a mixture as above, sow 20 pounds per acre. **Lb. 35c; 10 lbs. \$3.00, postpaid.** Write for quantity prices.



Sudan Grass

TIMOTHY—The Most Extensively Grown Hay Grass—Sow 12 to 15 pounds per acre. For hay, timothy is the best known and most extensively grown of all grasses. A stand is easily established, it is inexpensive to sow, it starts quickly and yields its best crop the year after it is sown, but the following year's crop may be equally as heavy if liberally top-dressed with manure. Stands up well, is easily cured and is heavy for its bulk, for which reason it has proved the most profitable hay crop when grown for market. The yield on good land frequently runs from 1½ to 3 tons per acre. The best time to cut Timothy is when it is in bloom; it is then easier to cure and its feeding value is higher. Meadow Fescue or Kentucky Blue Grass, Red Top or Herds Grass and Ladino Clover all mature at the same time as Timothy, and are good grasses to sow with it for hay and pasture. A good mixture is 6 pounds Timothy, 5 pounds Red Top, 7 pounds Meadow Fescue and 4 pounds Ladino Clover. Sow this mixture at the rate of 20 pounds per acre. **Per lb. 25c; 10 lbs. \$2.00, postpaid.** Write for quantity prices.

Write to your Agricultural College for Bulletin No. 1254—"Important Cultivated Grasses"

Grass Seeds

Write for Quantity Prices.

MEADOW FESCUE (English Blue Grass)—A splendid spring and summer grass, stands close grazing and makes more and thicker foliage than even orchard grass and tall meadow oat grass. The roots penetrate deeply, adapting it to poor soils and making it quite drought-resistant. It also makes a good fall and winter pasturage, as it remains green throughout the winter. Although used principally in pastures, it makes a good hay, and cattle thrive on it green or dry. A good mixture when sown for hay is 7 pounds Meadow Fescue, 6 pounds Red Top, 8 pounds Timothy and 5 pounds of Red or Alsike Clover. For a permanent pasture we recommend 10 pounds of Meadow Fescue, 8 pounds Orchard Grass, 8 pounds Tall Meadow Oat Grass, 6 pounds Kentucky Blue and 4 pounds Ladino Clover. Sow either of the above mixtures at the rate of 20 pounds per acre or if Meadow Fescue is sown alone, 25 pounds per acre. **Lb. 30c; 10 lbs. \$2.50.**

TALL MEADOW OAT GRASS (Evergreen Grass)—This grass seems to make more leafage and grazing, a larger yield of hay and to keep green longer, both during the winter and summer, than most grasses. It is especially adapted to heavy soils. It withstands heat and drought and the cold of winter; starts very early in the spring and continues late in the fall. For hay it can be cut twice in a season, frequently producing doubly as much hay as timothy. Ripens at the same time as Orchard Grass and Red or Alsike Clover. Thrives on uplands but gives excellent results on nearly all soils and better than most grasses on light and sandy soils. When sown alone, sow 25 to 30 pounds to the acre either in spring or fall. **Lb. 40c; 10 lbs. \$3.50, postpaid.**



Tall Meadow Oat Grass

RED TOP (Herds Grass)—Sow 12 to 15 pounds per acre. This is one of the most valuable and satisfactory grasses in all localities. Thrives on low ground, where water stands late in the season. Red Top should be included in all mixtures intended for permanent pastures or hay. It makes excellent pasturage and is ideal for hay. When well established it spreads and will supplant other grasses. Fine for hillsides, will prevent erosion. Matures at the same time as Meadow Fescue, Orchard Grass, Tall Oat Grass and Timothy. **Lb. 35c; 10 lbs. \$3.00, postpaid.**

KENTUCKY BLUE GRASS—Sow 35 to 40 pounds per acre. There is probably no other grass that equals Kentucky Blue Grass for permanent pasture, nor one that will yield a sweeter and more nu-

tritious pasture. Except on very light soils it should be included in every pasture mixture. Very hardy, spreads freely, produces abundantly, withstands drought and cannot be tramped out. **Lb. 40c; 10 lbs. \$3.50, postpaid.**

OREGON RYE GRASS—A rapid grower, very winter hardy, leaves and stems medium fine, stools heavily, has a bright green color. Excellent for pasture or for hay. Plant with Ladino Clover to prevent bloating. Sow 20 pounds per acre. **Lb. 25c; 10 lbs. \$2.00, postpaid.**

BROME GRASS—Will stand drought and produce heavy crops in dry sections and on poor soils where other grasses perish. It is one of the hardiest growers and succeeds on our dry hillsides. Sow 35 pounds per acre. **Lb. 40c; 10 lbs. \$3.50, postpaid.**

MADRONA PASTURE MIXTURE—Why Should I Sow a Pasture Mixture?

Simply because a mixture of grasses will yield a better crop than a single grass—the greater the number of grasses in a mixture the thicker the stand and a more prolonged growth is produced. Mixtures occupy the ground more completely than a single grass and help to keep out weeds. Some grasses grow in tufts and require other grasses to fill in. A mixture yields a constant succession of growth from spring till fall. Mixtures last for years. They insure against failure of any one grass and give more and better grazing for a longer season. Our Pasture Mixture will do everything a good meadow mixture can do. It is a combination of grasses and clovers. If you plant MADRONA PASTURE MIXTURE you'll always be sure of pasture and hay. Sow 20 lbs. per acre for best results. 5 lbs. \$2.00; 10 lbs. \$3.50. Write for quantity prices.

Field Seeds



Kanota
Red
Oats

KANOTA RED OATS—Asked why he thought Kanota oats were better, one of our California customers answered: "They mature 10 to 14 days earlier than other Red Oats planted under similar conditions, produce taller, finer straw, finer leaves and heavier heads, show a higher test weight per bushel. The kernel is heavier in proportion to the size of the grain than other oats and Kanotas resist lodging to a remarkable degree." A recent test at Davis, California, on the University Farms, Kanota Oats yielded 85.2 bushels per acre against 52.6 for California Red Oats. Write for prices.

IMPORTANT—Please Read. Clover, grass and field seeds are subject to market changes, therefore we cannot print prices good for any length of time. When you are ready to buy, drop us a line stating what you are interested in and how much you will want, and we will quote, submitting samples at the same time. We quote only on fancy stock seed. Our prices will be right.

Oats

WHITE SEED OATS—Our stocks are all double re-cleaned. Light oats and chaff completely taken out. We can supply you with SHADELAND, Eclipse; SHADELAND, Climax; COMMON WHITE. Write for prices.

WINTER GRAY OATS—Recommended for fall sowing. Winter Gray Oats will withstand hard winters better than either white or Kanota Reds. Heavy producers, sweet and nutritious. Can be planted in the Spring in the Coastal sections but not recommended for spring planting, inland. Write for prices.

Barley

SUCCESS BEARDLESS BARLEY—This variety brought out and successfully featured by Washington State College, has proved more than was anticipated in the Rogue River Valley. A heavy yielder that will not lodge and almost devoid of beards. Write for prices.

COMMON BEARDLESS BARLEY—While a small percentage of beards will be found in this sort, we believe our stock is as free of beards as is possible to secure. Write for prices.

BEARDED BARLEY—Grown usually for the grain. Hardy and a heavy yielder. Our stock of this type is always of highest grade. Write for prices.

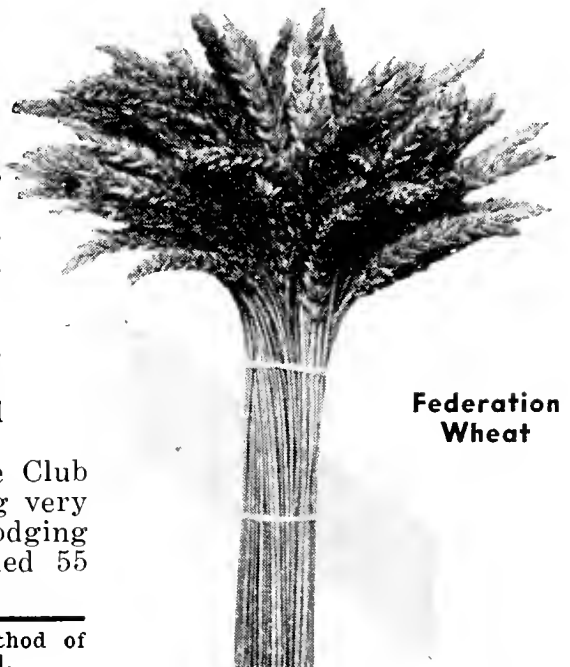
HANNCHEN BARLEY—A heavy yielding, medium early, two-row barley, giving the best average yields west of the Cascades. Grains are very plump, thin, hulled, making it the best quality of grain in the barley line. Will weigh almost equal to wheat when sacked. The most readily marketed barley in the Northwest. Klamath county is gradually turning to Hannchen where many planters report weight yield per acre equal to wheat, with a better price return. Write for prices.

Wheat

FEDERATION—A variety of beardless wheat that is gradually taking the place of Club and Bluestem. Especially recommended for rich ground as it does not lodge badly. Can be sown in Fall or Spring, excellent for hay. Write for prices.

BLUESTEM—Preferred by many for hay purposes. Bluestem has a soft straw, therefore makes a better hay, not so stiff. Lodges badly on heavy ground. Does best on higher, poorer soils. Very leafy and beardless. Write for prices.

BIG BLUE CLUB—One of the club wheats, Big Blue Club outyields them all. It is adaptable for hay, being very leafy. The stem is strong enough to prevent lodging easily. Our seed came from a field that yielded 55 bushels to the acre. Write for prices.



Federation
Wheat

Treat your wheat with Copper Carbonate—the modern method of preventing smut. See page 39. Poison, and cannot be mailed.

Field Corn

Bigger and Better Yields from Our Acclimated Seed.



Rogue Valley Dent

ROGUE VALLEY YELLOW DENT—This strain of yellow corn was originally Minnesota No. 13, but by continued crossing it has been improved to the extent that the ears are larger, kernels heavier and the crop earlier maturing. Matures in about 120 days. The earliest of the more prolific corns and probably holds the record for the largest yield. Rogue Valley Yellow Dent makes a beautiful ear and whether on the cob or shelled no yellow corn is more attractive. Grains are deep, medium wider and firmly set on a small cob. The shuck is close and completely protects the tip against adverse weather. Our Rogue Valley Dent is probably the most extensively planted in Southern Oregon and Northern California. Plant when frost danger is over and the ground is warm at the rate of 8 pounds per acre. **Prices, Postpaid: Pkt. 10c; lb. 20c; 10 lbs. \$1.25.** Quantity price upon application.

Vetches and Peas

HUNGARIAN—A heavier yielder and better able to stand winter freezes than the Common variety. Write for prices.

COMMON—Better known to all. Write for prices.

AUSTRIAN WINTER PEAS—Here is the ideal forage legume for hay, ensilage or for pasture. Austrian Winter Peas will out-yield vetches, 2 to 1. The vines and pods are almost as large and heavy as garden peas. The vines, like all legumes are relished by all kinds of stock. Plant in the fall for best results. Will not winter-kill. Spring planting is not recommended, except in the Coastal regions. For a cover crop for building up the soil, Winter Peas are head-and-shoulders above Vetch for they will produce double the tonnage of green manure. **Postpaid prices: Lb. 20c; 10 lbs. \$1.75.** Write for quantity prices.

Be sure to inoculate Winter Peas with Nitragin before planting. Insure a bumper crop with Nitragin.

Seed Rye

BEARDLESS SPRING RYE—A splendid sort, very hardy, yielding a heavy crop and much relished by stock. Beards drop off when handled. Write for prices.

Millets

Prices: 10 lbs. \$2.00, postpaid. Write for quantity prices.

GERMAN or GOLDEN—An improved variety, yielding a larger crop of seed than the common millet. Also yields a heavier crop of hay. Write for prices.

SIBERIAN MILLET—It is extremely hardy, withstands drought wonderfully and is about two weeks earlier than Golden Millet, growing 2½ to 3 feet in height.

The Original Legume Inoculator
NOBBE-HILTNER PROCESS
NITRAGIN
 TRADE MARK REG'D. DEC. 5, 1898 NO. 32212
 Restores and Maintains Soil Fertility

The Best Inoculation for ALL Legume Seeds Means Better Crops, [Better Soils, Less Fertilizer Expense

NITRAGIN IS THE LOWEST PRICED HIGH QUALITY INOCULATOR ON THE MARKET.

Nitragin now sells to the farmer at only 6½c per billion Legume Germs when packed in one bushel sizes for Alfalfa, Clovers and Vetches. When you buy inoculation, you buy only Legume Germs. You cannot see them with the naked eye. All you see in the container is the material upon which these germs live. These Germs are PERISHABLE, whether packed in tins or in bottles. Inoculants over a year old may have little or no value. NITRAGIN is positively guaranteed to the end of the time dated on each container.

NITRAGIN PROTECTS YOU

Every NITRAGIN label tells you at a glance what you are buying. For your protection NITRAGIN was the first inoculator to place the GERM COUNT when packed, the Expiration Date and Price on every label. NITRAGIN has served the American farmer since 1898.

REMEMBER, NITRAGIN can do ANYTHING CLAIMED BY other INOCULANTS—and do it BETTER and CHEAPER.



NITRAGIN on ALFALFA
 The wonderful nodules enrich the soil and insure a big crop.

Seeds of all legumes—Clovers, Alfalfa, Beans, Peas, Vetches, etc., will yield better results if inoculated with NITRAGIN, and in addition leave in the soil a heavy deposit of nitrogen which benefits all succeeding crops. No other inoculator will produce the wealth of nodules obtained by using NITRAGIN. NITRAGIN is economical and easy to use. Full directions for use accompany each package. When ordering be sure to specify crop and amount of seed you wish to inoculate.



NEW LOW PRICES FOR 1934 SEASON.

When ordering, always specify kind of seed

Alfalfa, all Clovers

Size	Price
½ bu.	\$.35
1 bu.65
2 ½ bu.	1.40

Peas, Vetch, Beans, Austrian Winter Peas

Size	Price
½ bu.	\$.35
1 bu.50
*1 ¾ bu.80
5 bu.	2.25

*"100 lb. size" packed only for Vetch and Peas.

Add 10c to cover postage on all NITRAGIN sizes of 1 bu. or over. Smaller sizes, 5c additional for postage.

Soy Beans, Cow Peas

Size	Price
1 bu.	\$.35
2 bu.65
5 bu.	1.40
10 bu.	2.45

Garden NITRAGIN for Peas, Beans, Sweet Peas

Inoculates from 1 oz. to 8 lbs. seed. Price 25c.

We Take Our Field Seeds to a Real Cleaning.

Germāco Hotkaps

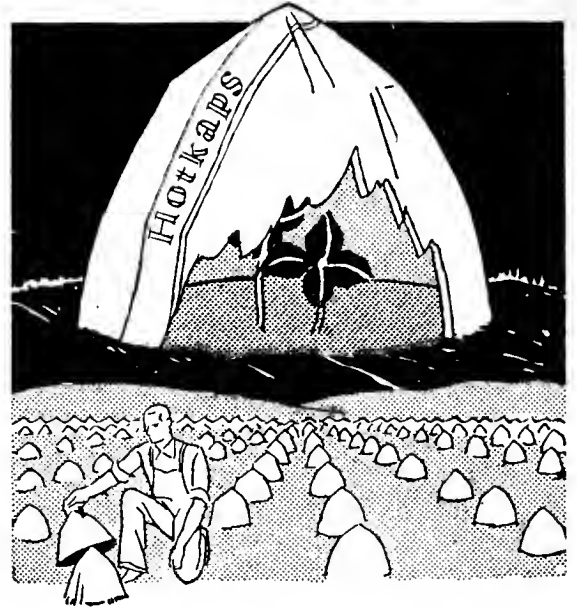
possibility of the plant being damaged in a heavy rain. "HOTKAPS" are waterproof. They guard against too much moisture, which frequently causes a delayed and weakened growth.

In California, the home of "HOTKAPS," and where the most modern methods of culture are applied to "million dollar" crops, growers have discovered that by using this wonderful invention they can plant the seed directly in the field. They have found that a plant seeded in a permanent place is sturdier and more resistant to disease and insects than one that is transplanted. This is important to growers in other parts of the country who now must first plant seeds in hotbeds, then transplant them to cold frames, and again to the field. "HOTKAPS" mean that the gardener can be first to market and so command a better price for his crops. "HOTKAPS" more than pay for themselves. They represent the best investment a gardener can make.

"HOTKAPS" are made of a specially prepared wax paper and are cone-like in shape, measuring about 11 inches in diameter at the base and coming to a point at the top.

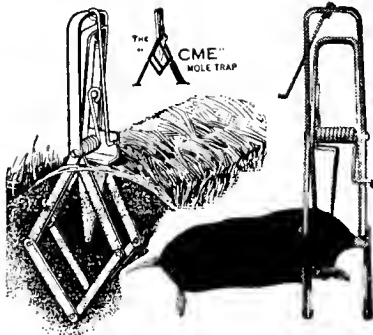
"HOTKAPS" have a flanged edge that is covered with dirt to hold them down. They are waterproof. Rain will not destroy them, nor will it injure or lessen their effectiveness in any way. "HOTKAPS" are packed one thousand to the package, which weighs 25 pounds. Only the slightest pressure is required to set the cap. The "HOTKAP SETTER," selling for \$2.50, will prove very helpful where a great number of plants are set. This is a small steel cone, the exact shape of the "HOTKAP" itself, with a handle at the top.—PRICES: 1 roll \$10.00 per roll; 5 rolls \$9.85 per roll; 10 rolls \$9.75. Broken lots 2c each. 100 Home Package, including Setter and Tamper, \$2.40. Please add postage.

Weight: 1,000 package HOTKAPS, 28 lbs.; 250 package, 9 lbs.; 100 package, 5 lbs.; Steel HOTKAP Setter, 3 lbs.



The Acme Mole Trap

MOST EFFICIENT MOLE TRAP ON THE MARKET



**The ACME is Safe—
Sure—Small—Easily Set
and Rust Proof. Rid your
garden and lawn of moles
with an ACME. Price
postpaid, \$2.00.**

Moles, the bane of every gardener fall prey to this trap. We have tried out all types of traps with little success, but after giving the ACME Trap a real try-out this past season we are convinced that we have finally found the trap, every gardener is looking for. Ten moles in one run in two days. That's what we did with the ACME. Read what other have to say about the ACME.

Mr. O. E. Grelle,
Portland, Ore.

Dear Sir:

Perhaps you will be interested in learning of the complete success we have had with the Acme mole trap in eliminating our mole problem.

We have about 20 acres devoted to lawn and flowers. It was very discouraging to see that our labor and expense were offset by moles for months. We have tried almost everything and despaired of ever eliminating moles.

Finally the Acme trap was used. I believe that it has established a world's record. Almost every day for months it caught moles. Toward the end of last summer our difficulties had entirely disappeared.

We congratulate you on this ingenious and effective invention.

Yours very truly,

Mrs. W. H. Graffis.

Ridgewood,
Star City, Indiana, Dec. 19, 1932



Soy
Beans

Soy Beans

Soy Beans—A Profitable Crop for Hay or for Pasture

VIRGINIA, on account of its abundant growth and large yield of beans, makes the best Soy Bean for hay. One of the earliest. Vines make a fine growth, filled with pods, stand about three feet high, are easy to cut and cure. Stems fine, leafage profuse. **Lb. 25c; 10 lbs. \$2.00.** Write for quantity prices.

WILSON EARLY BLACK—Very prolific variety and one of the best where quick, early variety is desired. Average height on good soil is about 3 feet. Matures in about 115 days. Prices same as Virginia and postpaid. Write for quantity prices.

TARHEEL BLACK—This is also a very fine variety for hay. Fine foliage, early maturity and heavy yielding. Matures in about 120 days. Prices same as Virginia and postpaid. Write for quantity prices.

Clovers

RED CLOVER—The standard clover for all purposes. Makes an excellent hay when mixed with timothy. Succeeds well on most any soil. Inoculate seed before planting and you'll be sure to get a stand. **Lb. 35c; 10 lbs. \$3.00 postpaid.** Write for quantity prices.

ALSIKE CLOVER—This is a perennial adapted for hay or pasture. A valuable crop for bee pasture. Does well either on poor dry soils or in wet rich soil. Being finer, brighter and not so dusty. Alsike hay is preferred to Red Clover. Inoculate all clovers and be sure of getting a stand. Prices same as Red Clover. Write for quantity prices.



Sweet Clover

WHITE BLOSSOM SWEET CLOVER—Sweet clover is one of the most important soil improving crops. Withstands adverse conditions of soil and weather better than alfalfa and red clover. Does not winterkill. Produces more on this land than alfalfa and red clover and is equal to alfalfa and red clover in nutritive value. Sow it for hay, pasturage and soil improvement. Sow it for pasturing hogs and cattle—they all like it. Sow it on lands too poor, too worn out, too sandy for other crops and bring the land into condition to produce profitable crops. You can sow it on your fall-sown grain without preparation, except harrowing. Make the seedbed fine and compact and cover the seed lightly. Inoculate with Nitragin. See page 25. Plant 20 pounds to the acre from February to March. We offer only scarified, hulled, fancy seed, free of dodder, of high purity and germination. Scarifying raises the germination percentage, which is very low on untreated seed. **Prices postpaid: Lb. 25c; 10 lbs. \$2.25.** Write for quantity prices.

No luck with Alfalfa? Inoculate your seed with NITRAGIN and get fine, sturdy stand.

MONARCH'S VERIFIED ORIGIN

ALFALFA SEED

One of our Agricultural Experiment Stations says: "The unfortunate use of unadapted varieties of alfalfa has probably caused more failures and discouraged more farmers than any one factor in the production of this crop." SOW ONLY ADAPTED HARDY ALFALFA OF VERIFIED ORIGIN.

The true value of hardy alfalfa strains has been proved during the past two winters. Southern grown, non-hardy seed didn't have a chance to withstand the freezes it was subjected to. Only the hardy Northern grown seed "pulled through." Our seed comes to us from stands of true-to-type, pure and unmixed Chilean Alfalfa. We handle only northern grown seed of highest quality; free of Dodder and guaranteed to meet all State Seed Law requirements.



MODOC COUNTY CHILEAN ALFALFA—For years we have listed this sturdy variety as "Our Prize Winning Mountain Grown Strain." This seed comes to us from Modoc County California; high up in the mountains of the northeastern part of the State. Grown at a high elevation, subjected to the most severe winter weather this is truly a hardy strain. Our Modoc Chilean Alfalfa is proved seed. It will produce profitable stands for years. If you plant our seed of this strain it will not be necessary for you to plow up the stand and replant after two or three years, for it is long-lived. There are stands on the farm from which our seed comes which have been producing heavy crops of hay and seed for the past thirty years. Isn't this proof enough that it will endure and proof that fields planted to our MOUNTAIN GROWN MODOC COUNTY ALFALFA will outlive those fields planted to inter-mixed varieties of Southern grown seed? **Lb. 30c; 10 lbs. \$2.75, postpaid.** Write for quantity price.

OREGON COMMON ALFALFA—We offer locally grown common alfalfa harvested from old, non-irrigated stands at prices below quotations of the past. If you are interested in securing a good strain of alfalfa seed at the right price, drop us a line for quotations. Prices upon application.

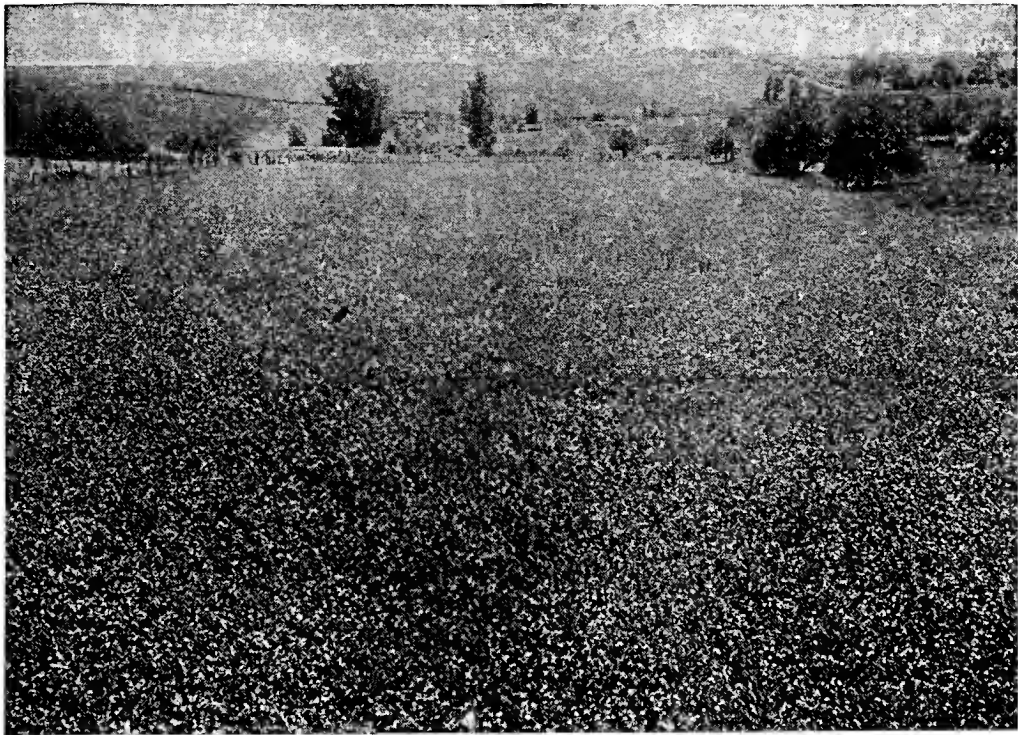
GRIMM ALFALFA—The hardiest of all alfalfas and will stand the severest winters of our mountain sections. It has a branching root growth that gives the plant a firm hold on the soil and prevents heaving by frequent freezing and thaws, and also adapts it to shallower soils. If your soil has a hardpan near the surface, or if your farm is in the mountain section, it will pay you to give Grimm the preference. Being short rooted, Grimm will thrive on soils where the water table is close to the surface. Grimm is very leafy and fine stemmed and is preferred by most hay buyers. Sow Grimm 8 pounds per acre after frost danger is over. Fertilize with Soil Sulphur or Superphosphate for bumper crops the first season. We handle only State Sealed and Certified Grimm seed. **Lb. 35c; 10 lbs. \$3.00, postpaid.** Write for quantity prices.

RAISE PRIZE WINNING CROPS OF ALFALFA WITH OUR SEED AND BE SURE TO INOCULATE SEED WITH NITRAGIN. (See page 25.)

Ladino Clover

THE GREATEST PASTURE CLOVER GROWN

LADINO CLOVER WILL PASTURE MORE CATTLE THAN ANY OTHER VARIETY OF CLOVER WE KNOW OF. LADINO IS A PERENNIAL WHITE CLOVER THAT GROWS FROM 12 TO 18 INCHES TALL PRODUCING A MOST PALATABLE FORAGE FOR CATTLE, SHEEP AND HOGS. LADINO INCREASES MILK FLOW, IMPROVES THE SOIL, WILL THRIVE ON SHALLOW MOIST SOILS AND IS THE FIRST CLOVER TO AWAKEN IN THE SPRING AND THE LAST PLANT TO QUIT IN THE FALL. Ladino should be sown in the spring for best results. Prepare the soil early and have it in readiness for sowing. The application of sulphur or gypsum to the soil will quicken the young growth and promote a heavier and sturdier stand. Sow 6 pounds of seed per acre, harrowing in lightly. It is not necessary to grow a nurse crop with Ladino, although many growers plant Rye Grass, Orchard Grass or Fescue with the Ladino claiming that it will prevent bloating. We believe this is a good practice. If these grasses are sown with the clover it will not prevent threshing the crop for seed as the grasses named above can be easily cleaned out of the Ladino.



This picture shows a Ladino Clover field in full bearing.
Note the dense growth.

MR. C. J. HUNTER LIVING NEAR MEDFORD, OREGON, Says:

"I planted my field on the 25th of March last spring on ground that had been cleared during the winter, using 6 pounds of seed per acre. The seed was inoculated before planting and sowed with a broadcast seeder. I have 6 acres in the field supporting 21 head of dairy cows. Started pasturing the first of August."

ANOTHER CUSTOMER SAYS:

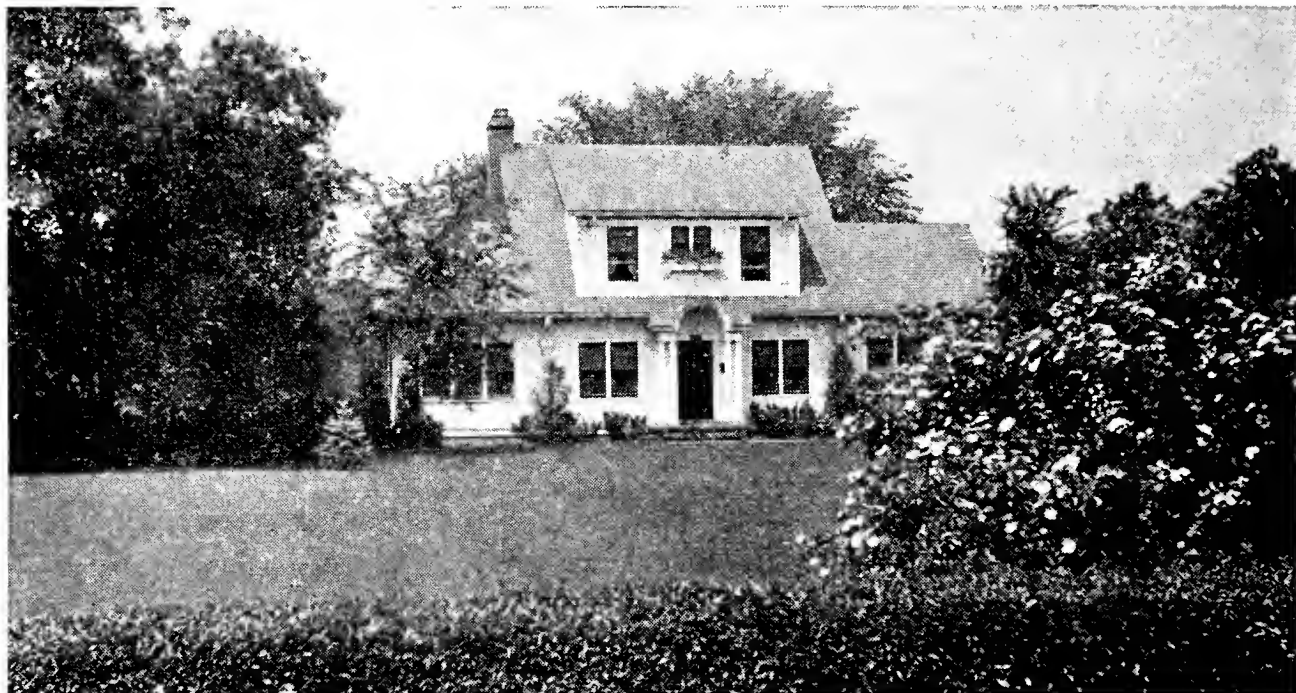
"I planted 6½ acres the last week in June. The first cutting was made about August 10th to keep weeds down. September 1st the stand was so thick I could not place my hand on a bare spot of ground and the clover stood a foot high. My cattle will leave other grasses and clovers for Ladino and will crop it right to the ground. I find Ladino Clover the finest forage plant I have ever grown."

Blue Tag seed, **\$1.25 per lb.**; Red Tag seed, **\$1.00 lb.**; Pasture Grade seed (contains some Alsike Clover which is not objectionable for pasture purposes), **75c lb.** Prices postpaid. Write for quantity prices.

SOW

Monarch Tested Lawn Seed

FOR FINER LAWNS



Place Your Home in a Setting of Luxuriant Grass.

MAKING A LAWN. We have a very complete bulletin on the proper method of planting a lawn. If you'll just drop us a line requesting this instructive bulletin we will mail it to you free of charge.

FERTILIZING MAKES LAWNS GOOD. Thousands of people have learned that the intelligent use of good fertilizer goes a long way toward solving most lawn problems. Fertilizer thickens the grass, gives it a rich green color and drives out the weeds. Fertilizers (plant-foods) prevent the appearance of bare and yellow spots and require less watering to maintain a good growth. The use of Peat Mull in the top soil before sowing the seed will help to build up an ideal soil condition for the established turf. The use of Peat Mull and VIGORO (See page 54) in combination will insure a successful lawn; a lawn that will be the envy of your neighbors. Use Vigoro at the rate of 4 lbs. per 100 sq. ft., working it into the soil before sowing the seed, water down the area and let it stand for a day before sowing seed. After the grass is up, make an application (at about 6 weeks from planting time) of 2 lbs. per 100 sq. ft. and then watch your lawn produce that velvety, luxuriant, rich-green setting for your home. VIGORO is a complete plant-food. It is a square meal for grass. This good plant-food will not only produce top growth, but promotes dense root growth, so necessary for a permanently substantial lawn. After the fertility of the soil has been built up it takes a very small amount of fertilizer each year to keep your lawn in "tip-top" shape.

MONARCH Improved ARMORY LAWN GRASS MIXTURE

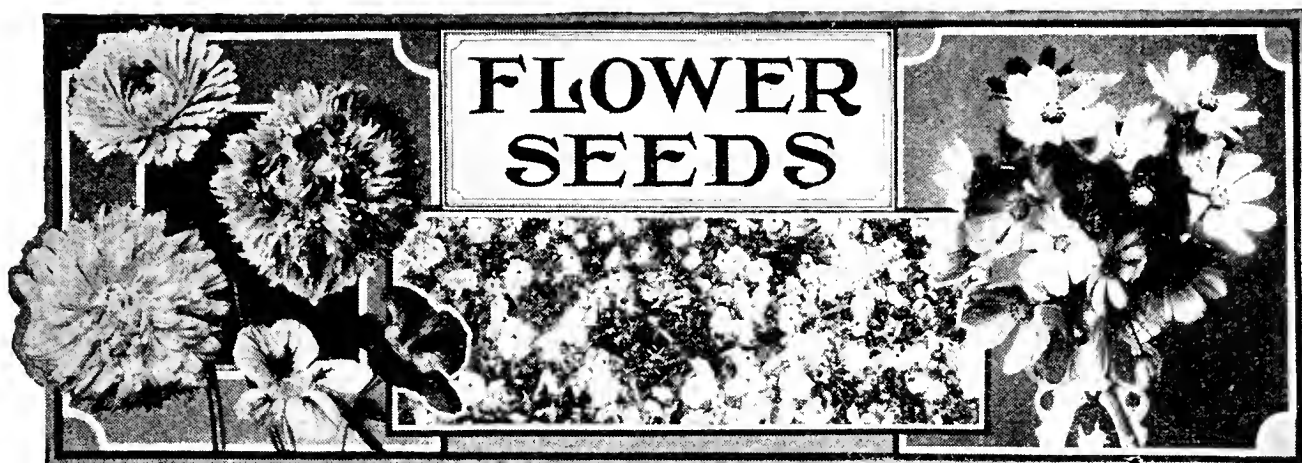
THIS PERFECTLY BLENDED LAWN GRASS MIXTURE WILL GIVE YOU A LAWN YOU CAN MOW IN SIX WEEKS FROM PLANTING. ARMORY LAWN Grass Mixture is a combination of grasses and clover mixed in such proportions as to give you a quick, sturdy and beautiful lawn. The faster growing grasses contained in Armory Mixture serve as nurse crops for the slower growing varieties which are eventually the dominating grasses of the mixture. We placed Armory Mixture on the market many years ago and from time to time have improved the blend by reducing some of the proportions and increasing the quantities of better grasses contained in the mixture until now in our IMPROVED ARMORY MIXTURE we have a grass that pleases wherever it is planted. If you wish to seed a shaded area just tell us so and we will incorporate the right amount of a shade-loving grass in Armory Mixture. If your order does not specify seed for shade we will send straight Armory Mixture. Rate of seeding is 1 lb. to 200 sq. ft. Price, lb. 60c; (By mail 70c).

STRAIGHT LAWN SEEDS

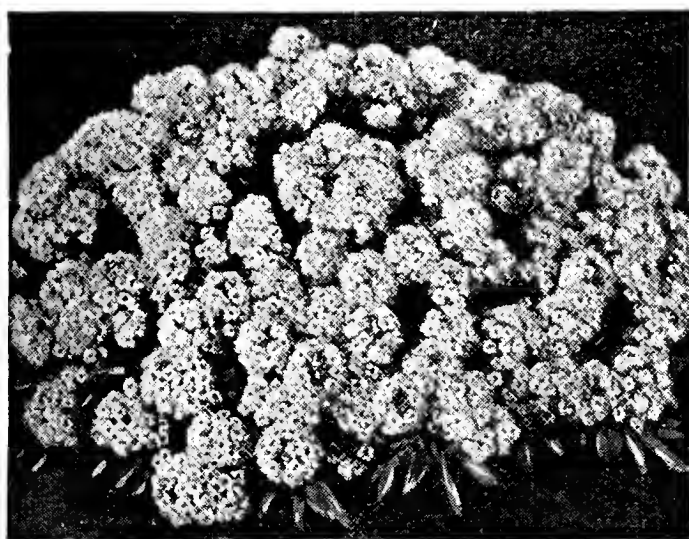
ASTORIA BENT GRASS—For the finer lawns use Astoria Bent. Particularly adapted to Coastal regions. Per lb. \$1.60, Postpaid.

KENTUCKY BLUE GRASS—We offer this grass seed in three grades, all of extra fancy quality, re-cleaned, free of weeds and high in germination. Extra Fancy Seed. Per lb. 70c; Fancy Seed, per lb. 60c, Postpaid.

WHITE DUTCH CLOVER—Extra fancy seed, free of weeds, of high germination. Per lb. 70c, Postpaid.



The following abbreviations are used to acquaint those ordering with the physical nature of plants: "H" for hardy; "HH" for half-hardy; "T" for tender; "A" for annual; "B" for biennial; "P" for perennial.



Alyssum

AGERATUM MEXICANUM (Floss Flower) "HA"—Much prized summer blooming plants. They thrive in the hot summer weather and remain covered with dense clusters of small feathery flowers. The taller type is useful for cutting while the dwarf sorts make excellent edging plants. Specify which you desire. Color light blue. **Pkt. 10c.**

ALYSSUM "HA" (Procumbens or Carpet of Snow)—Four inches high. The finest edging variety, producing the pleasing effect of a snowy mass of tiny white flowers obscuring the foliage. **Pkt. 10c.**

ASTERS "HHA"—What a brilliant display asters make in the garden in early autumn! We offer a splendid assortment of the chief types which differ in form and season of blooming. Asters are ideal bedding plants, and the long stems of many sorts make them exceptional as cut flowers.

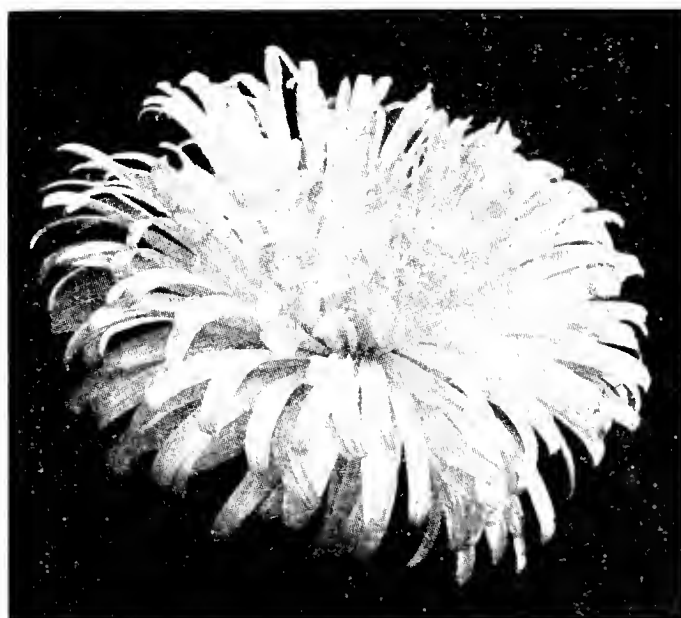
Double Giant Crego Asters—Grow 2 feet. This class, also called "Ostrich Plume" and "Giant Comet" blooms a few days after the earlier varieties which are not

so desirable. Double flowers of fine size, have long, shaggy, twisted petals and are borne abundantly on branching plants of robust growth. **Pkt. Mixed 10c.**

Double Giants of California—Grow 2½ feet. Selected from the Cregos, this type has flowers of the same form, but they are larger and carried on longer stems. This makes them better as cut flowers. They come into bloom two weeks after Cregos and should be planted only where the growing season is long. **Pkt. Mixed 15c.**

Giant Sunshine Asters—This artistic flower grows to a height of 2½ feet and has a single row of outer petals adorned with a tufted center of short florets. A new race which is taller and larger flowered than any of the older Sunshine types. **Pkt. Mixed 15c.**

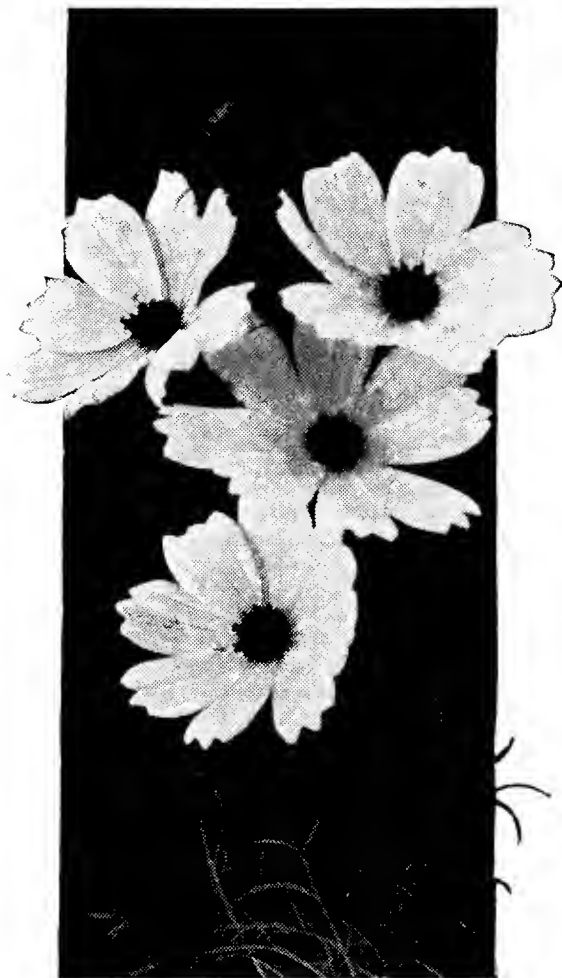
BACHELOR BUTTON "HA"—Often called Cornflower. Produces flowers on tall stems varied in color and excellent for cutting. **Pkt. Mixed 10c.**



California Giant

FLOWER SEEDS—(Continued)

CARNATION Chabaud Giants—Eighteen in. tall. This recently developed variety blooms six months after seeding and continues throughout the summer. The plants, robust and erect, supply handsome, double, clove-scented flowers of extra size. This is a true garden type, will bloom year after year. **Pkt. Mixed 15c.**



Early Flowering Cosmos

CASTOR BEAN (Ricinus) "TP"—When quick shrub effects for temporary backgrounds or screens are needed, these tall tree-like plants are excellent. Their growth in a single season is remarkable and they are highly ornamental. Their broad leaves, glossy green or metallic bronze in hue, are palm-shaped and beautifully lobed and the long spikes of seed pods are scarlet or green. Require rich soil and plenty of water. It is claimed by many that Castor Bean plants growing in a garden will discourage moles and gophers. **Pkt. Mixed 10c.**

CALENDULA "HA"—Eighteen in. We offer a mixture of the larger and newer varieties comprising yellow, orange, bronze and gold. Ball's Gold contained in this mixture is striking with its fully double golden yellow flowers of extra size and long stems. **Pkt. Mixed 10c.**

CARDINAL CLIMBER "TA"—Twenty-five ft. A very attractive, strong and rapid grower, with beautiful fernlike lacinated foliage. Delights in a warm sunny location and good, rich soil. **Pkt. 15c.**

CLARKIA "HA"—Eighteen in. These graceful plants can be recommended without reserve for the border or for cut flowers. They are erect and bushy with attractive light green foliage. Plant bears quantities of delicately colored double flowers, resembling small carnations or rosettes set along the stems. Colors range from chamois through salmon and orange to white. **Pkt. Mixed 10c.**

COBAEA SCANDENS (Cathedral Bells) "TA"—Thirty ft. This climber of rapid growth has deep green foliage of fine texture and it bears large bell-shaped flowers on graceful stems. The blossoms are green at first, later changing to beautiful deep violet blue. The vine is hardy in a mild climate. **Pkt. 10c.**

COSMOS "HA"—Five ft. Every gardener delights in these choice plants for late summer blooms. Feathery light green foliage and fine for screening unsightly backgrounds. The flowers are of a delicate texture with broad petals often overlapping and fluted, as poised terminally on long graceful stems suitable for cutting. Plants do well in any sunny spot, but bloom more profusely in poor soil which discourages excessive root growth. **Early Double Crested. Pkt. Mixed 15c.**
Early Mammoth Single. Pkt. Mixed 10c.



Chabaud Giant Carnation

DAHLIA "TP"—For specimen plants and for rich autumn display these flowers cannot be surpassed. The blossoms are wonderfully perfect and symmetrical. While Dahlias are usually grown from tubers, robust plants and excellent blooms may be produced the first year from seed started early in boxes and planted out after frost danger is past. Mixed sorts. **Pkt. 25c.**

FLOWER SEEDS—(Continued)

DIANTHUS (Pinks) "HP"—Twelve to 16 in. the time-honored garden pinks with their single or double carnation-like flowers make excellent border plants for modern gardens. Gay blossoms on strong stems come in a variety of rich colors and their stripes and markings make them especially attractive. They are of easy culture.

Single Mixed. Pkt. 10c.

Double Mixed. Pkt. 10c.

DIGITALIS (Foxglove) "HP"—Four to five ft. Much of the quaint charm of an old fashioned garden is lost when Foxglove is left out of the picture created by such a display as grandmother used to picture with her garden. Their long spikes are crowded with large thimble-shaped blossoms beautifully spotted on the exposed interior surfaces. They are ornamental subjects for naturalizing among shrubs or in the background of a hardy border.

Pkt. Mixed 10c.



Forget-me-not

ESCHSCHOLTZIA (California Poppy) "HA"—Twelve in. To most of you this flower probably seems rather common. You'll change your mind if you grow a bed of California Poppies of mixed colors ranging from yellow, through orange, cream and pink. Try them. Be surprised by the beauty of the new colors. **Pkt. Mixed 10c.**

EVERLASTING FLOWERS—We offer a mixture of various flowers suitable for drying for winter blooms. Our mixture contains practically all the flowers suited to this purpose. Drying them is a simple matter. Cut before fully expanded, bunch like sweet peas and hang on a line in a warm, dark, dry room. They will dry thoroughly in ten days. **Pkt. Mixed 15c.**

FORGET-ME-NOT (Myosotis) "HP"—Six to 8 in. While this charming spring flower will grow in the open border, there is some partially shaded damp spot in almost every garden where it will flourish and be a joy. The variety we offer is abundant in its bloom, flowers covering the plant, excluding the foliage. The flowers, a clear Wedgwood blue with tiny yellowish eyes, are borne in profusion. Start early for flowers the first season or sow in summer for blooms the following spring. **Pkt. 10c.**

FOUR O'CLOCK (Marvel of Peru) "TP"—Tall, 2 ft. Treated as an annual, this thrifty family produces plants suitable for growing as a hedge or as a low screen along a fence. The flowers have an interesting habit—they open in the late afternoon, remain expanded all night, and close again the next morning. Bloom from midsummer to frost. **Pkt. Mixed 10c.**

GAILLARDIA (Blanket Flower) (Grandiflora Portola Hybrids) "HP"—Two ft. Tones of orange, yellow, red and maroon, often beautifully combined in a single blossom, make these flowering plants gay ornaments of the garden all summer long. The foliage of soft green combines well with the flowers. The blossoms are 2 to 3 inches across. Portola is semi-double of magnificent size and broad overlapping petals golden tipped around glowing center of bronzy red. **Pkt. 15c. Grandiflora Mixed. Pkt. 10c.**

GEUM—A very satisfying perennial because it blooms almost all summer. A hardy perennial growing 2 ft. tall. Flowers like little double roses are gracefully borne on long stems over a thick rosette of strawberry-like leaves.

Mrs. Bradshaw. Large dazzling orange-scarlet. **Pkt. 10c.**

Lady Stratheden. Handsome rich golden yellow. **Pkt. 15c.**

GOURDS "TA"—Many of these besides having interesting fruits are very ornamental when used as climbers. **Mixed sorts Pkt. 10c.**



Gaillardia



Digitalis

FLOWER SEEDS—(Continued)



Stock Flowered Larkspur

gles from the strain so that now, only the tightly clustered blooms grace your flower garden. Guinea Gold a recent introduction is illustrated on the back cover of our catalog. It is really outstanding and a welcome addition to the Marigold family. We offer the African for tall flowers and French for the border.

African Tall Double, 2½ ft. Pkt. 10c.

French Dwarf Mixed. Pkt. 10c.

Guinea Gold. New. Pkt. 15c.

NASTURTIUMS—For the time and labor required, no other annual will produce such a lavish profusion of bloom for so long a time as nasturtiums, and for foliage and variety of color they are unexcelled.

Dwarf Mixed. Pkt. 10c; oz. 25c.

Tall Mixed. Pkt. 10c; oz. 30c.

NASTURTIUM, Double Golden Gleam—This is the only double or semi-double Nasturtium that comes true from seed. The fragrant golden-yellow blossoms, carried on long stems, are attractive as cut flowers, and the somewhat trailing plants are ornamental in any garden. Fine for window boxes. **Pkt. 15c.**

PANSIES. Monrach Giant Strain—We believe this strain will produce the very largest flowers of exquisite colorings. Our seed supply comes to us from a Pansy specialist; one who has worked for years to produce the utmost in size and outstanding colors. Their brilliancy of shading, extended season of blooming and long keeping characteristics make them general favorites. **Pkt. 25c.**

HOLLYHOCK "HP"—Almost every garden or doorway has a place for stately Hollyhocks. A tall group among shrubs or evergreen, a row lining a garden wall or fence or with a white cottage as a background, may early produce an effect for an artist to paint. The dignified stalks provided with an effect for an artist to paint. The dignified stalks provided with many large green leaves are richly adorned with flowers near the top.

Double Mixed Per Pkt. 10c.

KOCHIA (Mexican Fire Bush) "HA"—Two and one-half to 3 ft. The symmetry and attractive appearance of this hedge plant make it a favorite with the home gardener. The moss-like foliage remains clear, bright green until frost when it turns to a beautiful bronze red. The plants grow easily in moderately rich soil. **Pkt. 10c.**

LARKSPUR Double Stock Flowered "HA"—Two to 3 ft. Our selection of double stock-flowered Larkspur far excels any recent introductions of this garden favorite. Our new strain embraces the outstanding colors. Flowers of Cathedral type, borne on tall stems like Delphinium without the lateral shoots. Excellent for the border or for cutting. The blooming period of Larkspur extends from early summer to late fall. **Mixed Per Pkt. 15c.**

LOBELIA—An outstanding border plant bearing a profusion of true-blue blossoms through the entire season. Very easy culture. Plant seed in boxes in February and March, transplanting to border in May.

Crystal Palace Compacta. Pkt. 10c.

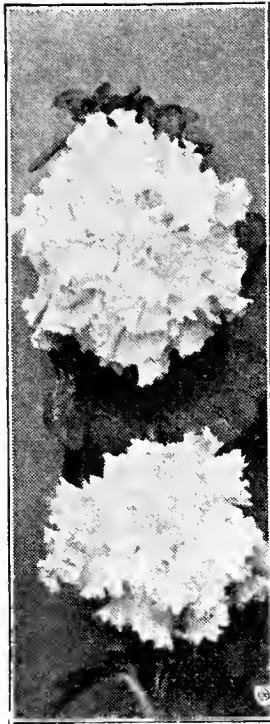
Marigold—Recent improvements have raised this much favored flower into greater popularity. Plant breeders have at last eliminated the sin-

Plant breeders have at last eliminated the sin-



Monarch Giant Strain

FLOWER SEEDS—(Continued)



PHLOX DRUMMONDI "HA"—Twelve in. Plant breeders have constantly improved this very popular flower until today we have a very compact blossom head with many new and attractive colors. For cutting, for bouquets or for bedding in masses they are unsurpassed. One foot high, hardy. Sow as soon as soil is warm. Transplant about one foot apart.
Mixed colors. Per Pkt. 10c.

PETUNIAS "HA"—For profusion of bloom, variety of color and effectiveness, Petunias have no equal. When massed in beds they truly form "a sea of color." As low border plants they are kaleidoscopic in their shades and tints. In window boxes or overhanging a terrace wall they are brilliant trailers. (See back cover for new introduction.)

- Balcony or Trailing. Mixed. Pkt. 10c.**
- Double Fancy Mixed. Pkt. 50c.**
- Ruffled Single Giant of California. Pkt. 25c.**
- Single Hybrids Mixed. Pkt. 10c.**

PYRETHRUM "HP"—Very ornamental plants blooming in early spring with Iris. Deserving of wider culture than they have been given. Often called "Painted Daisy." Sow seeds early in boxes for bloom same season or start in the open border for blooms the following spring, planting seed in July or August.
Mixed Pkt. 15c.

**Sweet Peas
Ruffled Spencers**

	Pkt.	Oz.
RUFFLED BEAUTY , Lilac Pink.....	15c	50c
RUFFLED ORCHID , Lavender Rose.....	15c	50c
RUFFLED ROSE , Deep Rose.....	15c	50c

SPENCER WHITES

Avalanche—Giant pure white (New).....10c 50c

SPENCER CREAM PINK SHADES

MARY PICKFORD—Dainty cream pink....15c \$1.00
 Kitty Pierce—Light lilac suffused blush pink..15c 50c

SPENCER PINK SHADES

Countess Spencer—Clear pink.....10c 40c
 Del Monte—Cerise Pink.....15c 50c
 Pinkie—Old Rose pink (New).....15c 70c

SPENCER PRIMROSE SHADES

Dobbie's Cream—Large deep cream.....10c 40c
 What Joy—Primrose yellow.....15c 50c

SPENCER RED SHADES

CAMPFIRE—Brightest Sunproof scarlet.. .10c 50c
 King Edward—Large blood red.....10c 40c
 Fiery Cross—Turkey Red.....10c 40c
SUNPROOF CRIMSON—Crimson won't fade
 in the sun10c 40c
 Charming—Deep cerise (New).....15c 60c

SPENCER LAVENDER SHADES

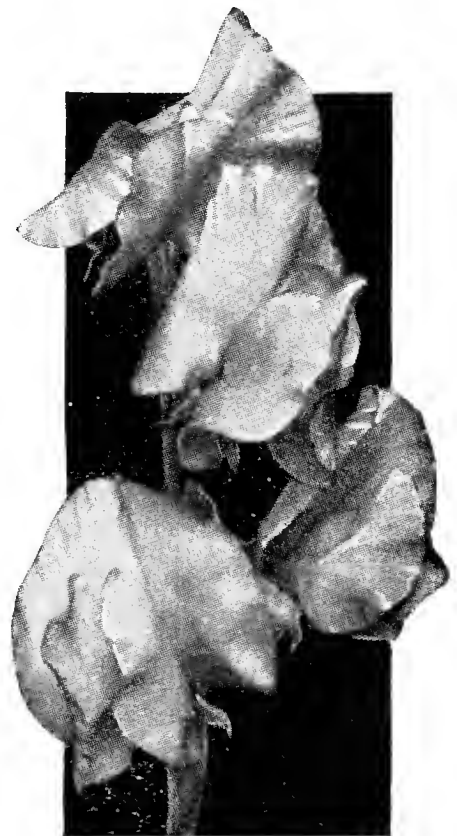
Florence Nightingale—Blueish lavender.....15c 50c
 Austin Frederick—New rosy lavender.....10c 50c

SPENCER ORANGE-SALMON SHADES

Celebrity—Brilliant orange15c 50c
 Tangerine—Salmon-orange15c 60c

SPENCER PURPLE AND BLUE SHADES

Jack Cornwall—Large Navy Blue.....10c 50c
 Mrs. Tom Jones—Large clear blue.....10c 40c
 Fortune—Violet blue15c 50c
BLUE BIRD—Violet blue15c 70c
Mixture of above varieties.....10c 30c



Sweet Peas

SALPIGLOSSIS "HA"—Two and one-half ft. (Painted Tongue). We offer the large flowering strain. For delicate grace, richness of coloring and velvety texture the regal Salpiglossis has practically no equal. From a low base of leaves rise slender wiry stalks which bear one or more large lily-like flowers in a magnificent range of colors. The gold veining of their deep throats is often pronounced and adds to their beauty. It is of easy culture and a great favorite in the open for cutting. **Superb Mixed. Pkt. 10c.**

SCABIOSA (Pin Cushion Flower) "HA"—Two and one-half ft. Garden enthusiasts for many generations have been fascinated by the different members of this flower family. Our selections comprise the most decorative varieties of the annual and hardy types. **Large Flowering Mixed Double. Per Pkt. 10c.**

SWEET WILLIAM "HP"—Two ft. When the late Tulips are gone in the spring and before many other flowers are in bloom, Sweet William will ornament the garden with rich and varied color. No flower has endured the fancy of gardeners more than Sweet William. Always a favorite. **Mixed per Pkt. 10c.**

STOCKS (Ten Weeks) "HA"—Twelve in. This early class forms dwarf compact plants that are excellent for edgings or low beds. They often do well in sections where plants of the later types cannot be

Zinnias

ZINNAS FIT OUR CLIMATE. THEY ARE THE MOST DEPENDABLE ANNUAL FOR THE GARDEN. Zinnias love the hot summers of California and Oregon. They do best in a soil which has been dug deeply and well fertilized. Cut off the first buds to make the plants branch. An enormous increase in blooms can be obtained in this manner. Cultivate frequently while plants are developing. We list only the DAHLIA FLOWERED type which has been developed into a flower as large as the former Giant type, and by far a more attractive blossom.

MONARCH DAHLIA FLOWERED MIXED—A blending of the better colors. This mixture includes all colors and makes an ideal display in the border. **Per Pkt. 10c.**

DREAM—A fine shade of deep lavender, turning to mauve. **Per Pkt. 15c.**

CRIMSON MONARCH—The largest and best red shade. Does not fade in the sun. **Per Pkt. 15c.**

EXQUISITE—Color is light rose, with center of deep rose. This is a beauty. **Per Pkt. 15c.**

ORIOLE—An immense orange and gold bicolor, changing slightly as it ages. **Per Pkt. 15c.**

BUTTERCUP—An immense deep cream yellow of lasting color. **Per Pkt. 15c.**

OLD ROSE—This is adequately described by its name, as it is of the real Old Rose shade; it is large, and for charm and beauty we consider it ranks next to Exquisite. **Per Pkt. 15c.**

grown. Colors range pink, yellow, crimson, lavender, mauve and purple. **Mixed Pkt. 10c.**

SALVIA (Flowering Sage) "TA"—Two ft. Very ornamental, flowers borne in spikes of fiery red or crimson; and continues in bloom in open ground until after severe frosts. Start in heat and transplant into light soil, one to two feet apart. Excellent for bedding in masses.

Splendens—Brilliant Scarlet. Pkt. 10c.

SNAPDRAGON "HA"—Modern Snapdragons, in their rich colorings certainly have outdone their ancestors. Many of the new colorings are startlingly attractive. We offer a mixture of the finer colors in both the medium and tall sorts. **Mixed colors, Pkt. 10c.**

VERBENA "TP"—Here is the flower that revels in that hot and sunny spot in your flower border. Use it for edging borders or for mass planting. Colors very vivid, strong growers. We offer the mammoth sorts recently introduced to the flower world. **Mixed Mammoths, Pkt. 10c.**

VIOLA CORNUTA (Tufted Pansies) "HP"—Six in. Those who do not know the Viola often mistake it for a small flowered Pansy. It belongs to the same family, but it is distinctly different. It is very hardy and for that reason it is one of the best edging plants for the permanent border or rock garden. We offer the most popular Jersey Gem Viola. **Pkt. 15c.**

WILD CUCUMBER—This is the quickest growing climber on our list. Grows wild—self-sown in many parts of our western country. **Pkt. 10c.**



Dahlia Flowered Zinnia, Exquisite

Flowering Bulbs

GLADIOLI — DAHLIAS

WE ARE OFFERING THIS YEAR ONLY THE RARER VARIETIES, SLIGHTLY HIGHER IN PRICE IT IS TRUE, BUT REPRESENTING THE HIGHEST TYPES IN GLADS.



Gladiolus

OUR PREMIUM MIXTURE

This mixture sold at a bargain price is not a cheap mixture of common sorts. On the contrary this is a field grown mixture of the finer sorts. Among this mixture will be found many of Kundred's ruffled types. Buy them by the hundred. First size bulbs per dozen, 35c, postpaid; per hundred, \$2.00, postpaid.

Dahlias

ALICE WHITTIER—Hybrid cactus. Giant flowers on stiff, erect stem; heavy primrose sulphur yellow. **Each, postpaid, 75c.**

BALLET GIRL—Hybrid cactus. Immense, incurved flowers on good stems. Orange petals edged white. **Each, postpaid, 60c.**

F. GRAHAM—Giant cactus on strong, erect stems. Color, salmon-rose, shading to yellow at the throat. **Each, 65c, postpaid.**

ACE OF DIAMONDS—Pompon. Small, bright red flowers. Very perfect with good stems. Fine for bouquets. **Each, 50c, postpaid.**

ALEC—Pompon. Light cerise, faintly tipped silver, good stems. **Each 50c, postpaid.**

DAISY—Pompon. A beautiful, neat little flower of salmon rose. Long, erect stems. **Each 50c, postpaid.**

MISS HELEN HOLLIS—Show. Gigantic flowers of deep scarlet on long, erect stems. **Each 50c, postpaid.**

ANGEL'S DREAM—Striking La France Pink. Striking color, vivid beauty, graceful form make Angel's Dream desired by all who see it. **Each 10c; Doz. \$1.00, postpaid.**

ANNIE LAURIE—Light pink, ruffled petals. Blooms early, spikes straight and strong. **Each 9c; Doz. 90c, postpaid.**

BETTY NUTHALL—Finest coral pink. One of the outstanding glads of recent introduction. Pale orange throat and light feathering of carmine. **Each 10c; Doz. \$1.00, postpaid.**

DR. MOODY—Light lavender. Very tall, strong grower, straight stalk. One of the favored lavenders. **Each 10c; Doz. \$1.00, postpaid.**

EMILE AUBURN—Smokey bronze. A glad, different in color, very striking and an asset to every glad collection. **Each 9c; Doz. 90c, postpaid.**

GERALDINE FARRAR—Lavender blue. You'll marvel at its beauty, both as to color and character of bloom. **Each 8c; Doz. 80c, postpaid.**

GOLDEN DREAM—Clear deep yellow. Unlike most of the yellows, Golden Dream is a clear yellow. Very beautiful. **Each 8c; Doz. 80c, postpaid.**

INDIAN CHIEF—Dark red tinted purple. Very desirable. Fine for specimen bouquets. **Each 9c; Dozen 90c.**

MRS. V. KONYNENBURG—Light blue. Very popular. Color is outstanding to say the least. **Each 12c; Doz. \$1.25, postpaid.**

RED GOLD MEDAL—Show. Brilliant orange scarlet; a sport from Gold Medal. Long, erect stems. **Each 60c, postpaid.**

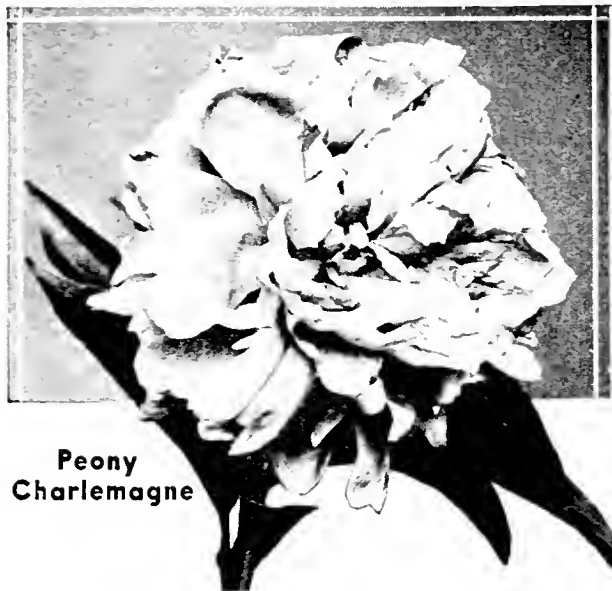
PFITZER'S TRIUMPH—Orange red. Of all the reds, this one stands out head-and-shoulder above them all. Don't pass up this one. **Each 15c; Doz. \$1.50, postpaid.**

RADIANT ORANGE—Clear apricot orange. Think of this combination of color tones, visualize this beauty in your garden. You just can't do it. Enjoy it in your garden this summer. **Each 11c; Doz. \$1.10, postpaid.**

MRS. CAL. COOLIDGE—Soft salmon pink. Very attractive, fine for bouquets because of the softness of coloring. Try this glad with light blue scabiosa in combination. **Each 12c; Doz. \$1.20.**

STAR OF THE SEA—Peach red, gold throat. Undoubtedly one of the very best glads. Coloring is exquisite. **Each 10c; Doz. \$1.10, postpaid.**

FLOWERING BULBS—(Continued)



Peony
Charlemagne

Cannas

Each 25c; \$2.50 dozen, postpaid.

KING HUMBERT—Mammoth flowers of brilliant orange-scarlet, broad foliage, rich coppery bronze with brownish green markings. Height 5 to 6 feet.



Cannas

WYOMING—Large orange-colored flowers; bronzy foliage. Height about 5 feet.

YELLOW KING HUMBERT—Immense spikes of golden yellow, with scarlet spotting in throat. Height about 5 feet.

FIREBIRD—Green leaved; flowers fiery bright red, in immense trusses; 4 feet.

METEOR—Large spikes of deep crimson flowers on tall spikes, green foliage.

ROSEA GIGANTEA—Deep rich dark pink shaded to coral; immense spikes of bloom. Height 4 feet.

REGAL LILIES

The most interesting lily ever discovered. Perfectly hardy, of medium height, bearing 5 to 8 large handsome blooms. Color white, outer petals shaded pink, throat suffused primrose yellow. Delightfully perfumed. Bulbs postpaid. 1 yr. size, each 25c; 2 year size, each 50c.

Peonies

THE FLOWER THAT
GRACED GRANDMOTH-
ER'S GARDEN

FESTIVA MAXIMA—Large rose type, white with crimson markings in center; one of the best. Fragrant. Each, postpaid, \$1.00.

CHARLEMAGNE—Salmon pink, very double and full. Each, postpaid, \$1.35.

FELIX CROUSSE—Bomb type; brilliant red, good odor, vigorous grower with spreading habit, blooms freely in clusters. One of the most enjoyable peonies and one of the best reds. Each, postpaid, \$1.10.

DUCHESS d' ORLEANS—A deep pink, salmon center, early bloomer and excellent cut flower. Each, postpaid, 85c.

KARL ROSENFELD—Semirose; velvety crimson, midseason bloomer, no odor, strong and healthy, free bloomer in clusters; large and fine for cutting. Each, postpaid, \$1.00.

Water Lilies

Plants ready in April.

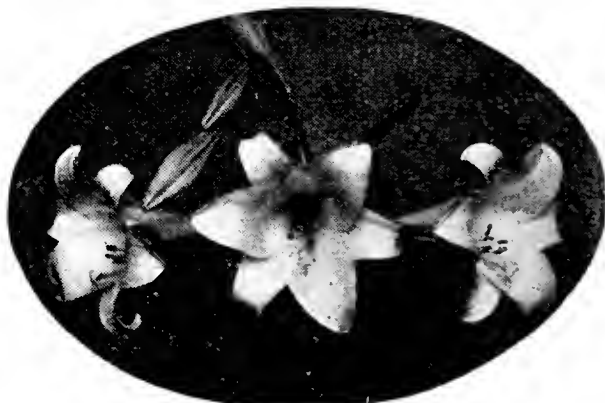
Our plants are strong with heavy growth, ready for the pond or water tub. We will hold orders until time to ship.

MARLACCEA ALBIDA—A vigorous variety. Large flowers of sparkling whiteness, stamens light yellow; produces freely and continuously throughout season. This is easily the best of the white water lilies. Each, postpaid, \$1.00.

EUGENIA DE LAND—Flowers of exquisite shade of deep rose-pink with petals long and lanceolate, yellow stamens. Very fragrant, borne on the surface of the water. Very desirable. Each, postpaid, \$1.50.

MARLIACEA CHROMATELLA—Flowers of charming canary yellow, from four to six inches in diameter, with bright yellow stamens. Leaves are beautifully mottled with brown. The best yellow in cultivation for all purposes. Each, postpaid, \$2.00.

WATER HYACINTHS—Flowers a delicate lilac in trusses like hyacinths. Plant is a floater and only requires placing in water where it will take care of itself. For best results place in shallow water 6 to 8 inches deep. Each, postpaid, 30c.



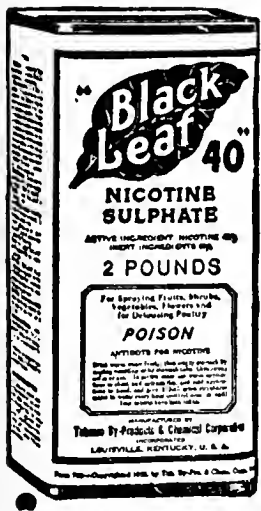
Regal Lily

Insecticides, Sprays, Dusts

PRICES F. O. B. MEDFORD UNLESS MARKED POSTPAID. ITEMS MARKED (*) ARE POISON AND CANNOT BE SENT THROUGH THE MAILS.

***COPPER CARBONATE**—The easiest and most effective manner in which to treat grains to prevent smut. Used at the rate of 2 ounces to the bushel of grain where no infection is noticeable, and at the rate of 4 ounces where smut is bad; control will be complete. **Per lb. 30c.**

BLUESTONE—Use in the making of Bordeaux Spray or for treating grain for smut before planting. Also used to kill the host of Liver Fluke infesting sheep and cattle. **Lb. 15c; 2 lbs. 25c.** Write for quantity price.



***BLACK LEAF 40**—The best spray for aphids, thrips, leaf hoppers on all trees and bushes, vines, vegetables and flowers. Be sure to emulsify the water into which Black Leaf is to be combined before adding Black Leaf, with Whale Oil Soap, which we can supply at 25c per lb. bar. Black Leaf prices are f. o. b. Medford. **1 oz. bottle 35c; 5 oz. bottle \$1.00; 1 lb. bottle \$2.25; 2 lb. can \$3.35; 5 lb. can \$6.00; 10 lb. can \$8.60.**



"DEAD SURE" Gas Ball Rodent Destroyers—This is a gas ball which, when lighted and placed in the proper position down in the runway, pours forth a deadly, poisonous gas that carries death to any living thing in the burrow. Although it means absolute destruction to the rodents it is perfectly safe for the user to handle without injury. It is nonexplosive, does not deteriorate with age and is cheaper than similar materials on the market. Sure death to moles and diggers. Full directions with your orders. **Per dozen, postpaid, 50c.**

VAPORITE—The original Soil-Insecticide. It kills Wireworms, Grubs, Nematodes, purifies the soil, will not harm bulbs. Merely mix VAPORITE (powder) with the soil. One lb. covers 50 square feet. Sold for 30 years all over the world. VAPORITE insures flowers and crops against pest attack. Is easy and harmless to handle and will rid your garden or grounds of all form of soil pests. Just scatter over the soil and fork or rake in. Creates a gas which remains active in the soil for a month. Can be safely used with growing plants. Kills root maggots, protects all root crops. Discourages moles and gophers. Insures a perfect garden. **Postpaid prices: 1 lb. 35c; 4 lbs. \$1.25; 10 lbs. \$2.50.** Write for quantity price. Use 330 lbs. per acre.



SNAROL

Kills Slugs, Cutworms, Sow Bugs, Snails, Earwigs and Grasshoppers. Merely sprinkle Snarol around and under newly planted vegetation. Insure them against destruction. A sure economical way to preserve the beauty of your garden—the most effective way we know of to wipe out all trace of these destructive pests. Guaranteed by the makers when used as directed. Snarol is not affected by water or rain. You can sprinkle the garden after Snarol has been applied without effecting in any way the value or killing powers. **1 1/2 lb. pkg. 35c; 4 lb. pkg. 75c. Cannot be mailed.**

Please Add Postage Unless Items Are Marked Postpaid.

PROTECT YOUR GARDEN FROM BUGS AND BLIGHTS

With

SHERWIN-WILLIAMS Insecticides and Fungicides
A Complete Line of Sprays for the Home Garden and Orchard

Come in or write for a FREE copy of "GARDEN SPRAY GUIDE"
Tells how to identify the pests—
what to use and when to spray



TYCOL

(Contact Spray; non-poisonous)

A highly refined oil emulsion for use on foliage in the garden, orchard or greenhouse. Will control Red Spider, Mites, Scale, Mealy Bug, White Fly and certain other pests.

1 lb.....35c 4 lbs.....65c
1/2 Pt...35c Quart...80c Gallon...\$2.00

ARSENATE OF CALCIUM
(Stomach Poison)

For making bait to control Strawberry Weevil and other pests.

1 lb.....35c 4 lbs.....65c

ARSENATE OF LEAD
A stomach poison spray for control of leaf eating insects such as Caterpillars, Beetles, Slugs and for the Apple and Pear Worm. May be applied either as a liquid spray or a dust.

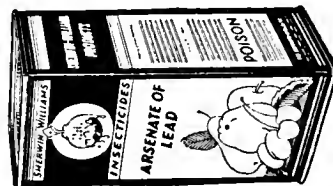
1/2 lb.....20c 1 lb.....30c 4 lbs.....60c

PEST-NOX

(Stomach Poison)

A poisoned bait for control of Cutworms, Earwigs, Grasshoppers, Army Worms, Sow Bugs, Snails and Slugs.

1 lb.....30c 4 lbs.....90c 10 lbs.....\$1.70



DRY LIME SULFUR

(Contact Spray)

A Lime Sulfur spray in dry form to be mixed with water for control of San Jose Scale, Pear Leaf Blister Mite, Mildew, Moss, Apple and Pear Scab.

1 lb.....35c 5 lbs.....\$1.50 10 lbs.....\$2.50

FREE-MULSION

(A Dormant Contact Spray)

An oil emulsion spray for use while trees or shrubs are dormant to control Scale, Red Spider Eggs, Leaf Roller, Aphis, Mealy Bugs, Pear Psylla and certain other insects and insect eggs that winter over on trees or shrubs.

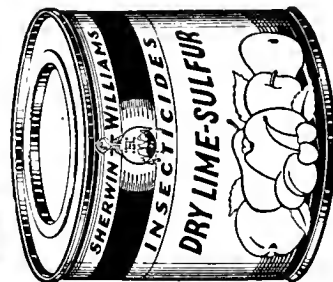
Quart....65c Gallon...\$1.65 5 Gal.....\$4.00



2 DUST (Fungus and Pests)

A special dusting compound for control of RED SPIDER, MITES, RUSTS, MILDEW and FUNGI, etc.

1 lb.....35c 5 lbs.....\$1.40



FUNGI-BORDO
(A Fungicide)

A chemically combined Bordeaux mixture for control of fungus diseases on trees and shrubs. Use for Leaf Curl and Blight on Peaches, Scab on Apples and Pears, Mildew, Rust, Strawberry Leaf Spot, Celery Blight and as a repellent for Flea Beetles on Garden Plants.

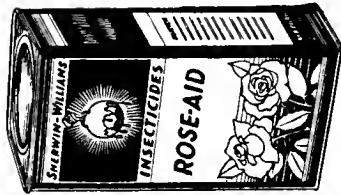
1 lb.....35c 4 lbs.....50c



ROSE-AID
(Stomach Poison and Contact Fungicide)

An especially prepared dust for roses. Will control Black Spot and Mildew on rose bushes. May be used also for Rust on asters, hollyhocks, and carnations; Mildew on phlox, larkspur, golden glow, dahlia, chrysanthemums, zinnia and sweet peas.

2 lbs.....60c



NICOTINE DUST

A safe dusting material containing nicotine for control of plant Lice and THIRIPS. Especially formulated for use on delicate plants that may be susceptible to injury from other sprays.

1 lb.....45c 5 lbs.....\$2.00 10 lbs.....\$3.50



PESTROY

Contains a stomach poison and contact fungicide. A combination spray for control of leaf eating insects and fungus diseases. Recommended for potatoes, beans and all garden crops as well as shrubbery.

1 lb.....35c



PRUNING COMPOUND

A wound dressing to be applied where limbs have been removed. Does not injure exposed tissue and allows the treated wounds to callous normally. S-W Pruning Compound contains 2 per cent Metallic Copper, which is the best fungicide known. Prevents Heart Rot and certain other fungus infections.

1 Pint....40c Quart....75c Gallon....\$2.50



One gallon equals 4 quarts
—8 pints.
One level tablespoon—3
level teaspoons.

General Directions for Spraying

Measure ingredients with reasonable accuracy. The dosages given in our free Spraying Guide for the smaller amounts of spray are given in teaspoons and tablespoons, level measure. By level measure is meant that after the spoon is well filled, the excess is struck off with a knife blade or thin paddle. The water may be measured in any container of known size.

Best results will be obtained if the insecticide (powder or emulsion) is first thoroughly mixed with a small portion

of the water in a separate container. When a thin, creamy mixture, free from lumps, is obtained, the balance of the water may be added while stirring.

Use as forceful a spray as possible, and drench foliage thoroughly. Pay particular attention to the more protected portions of the plant, and especially to the under side of the leaves. Many pests feed there.

After using, rinse the spraying apparatus with water, and dry thoroughly to prevent rusting.

RAT-NIP

***RAT-NIP**—Kills rats and mice every time. They can't resist it. Not one can escape. Used as a spread on bacon, bread, cheese. **Tube 35c.**



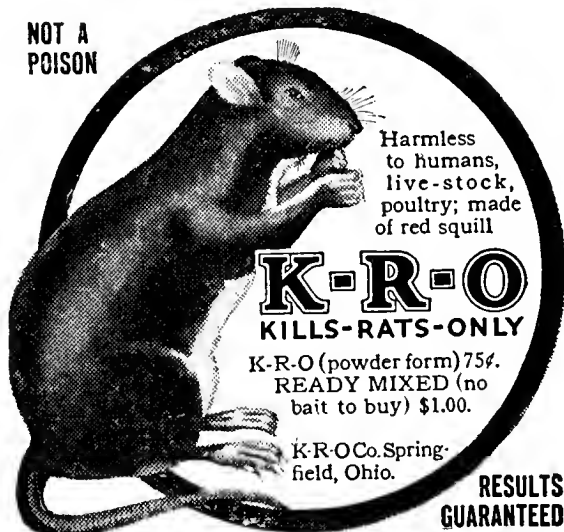
**Just Paint
it on the
Roosts!**

USE "BLACK LEAF 40"

To kill body lice on poultry, paint the roosts with a thin coating of "Black Leaf 40" (full strength) shortly before roosting time, using $\frac{1}{2}$ lb. to about 100 feet of roost. Under average conditions 2 pounds will paint about 400 running feet of roosts and cross-arms. If roosts have been white-washed, clean off the lime completely before painting. **1 oz. 35c; 5 oz. \$1.00; 1 lb. \$2.25; 2 lbs. \$3.35; 5 lbs. \$6.00; 10 lbs. \$8.60.** Prices subject to market change without notice.

NAPHTHALENE—An Insecticide for soil. Prevents and repels all soil pests such as Cutworms, Slugs, Wireworms, etc. Plant Naphthalene with the seed and keep your root crops free of ground pests. A product of proven worth. Try some with your seed order. Apply it early when the soil is moist. **Per lb. 20c.** Prices on larger quantities upon application.

**NOT A
POISON**



Postpaid Prices. K. R. O. Powder, 85c; Ready Mixed Bait, \$1.15.

SOLVO-TEX

CLEANSER AND WATER SOFTENER

SOLVO-TEX accomplishes more, requires less time. **SOLVO-TEX** was designed primarily for use around the dairy but its value as a cleanser around the laundry and kitchen make its uses manifold. **SOLVO-TEX** is displacing many of the older cleansers in use for years and there is real reason for the switch to **SOLVO-TEX**. **SOLVO-TEX** does the work quicker and better without injury to the hands. Ask the leading dairymen of the Rogue River Valley why they use **SOLVO-TEX** now in preference to other brands of cleansers. Their answer will invariably be—"We like it better because it works better." A washing powder of merit. **1½ lb. package 35c; 10 lb package \$1.50; 25 lb. package \$3.50.** (All prices f. o. b. Medford.)

TALBOT'S FLEA AND MOTH POWDER—Try a package and convince yourself of its effectiveness against these pests. **Pkg. 2 oz. 30c, postpaid.**

ANTROL—Rids your place of ants and keeps them under control. A syrup that is attractive to ants and a sure cure. Guaranteed to keep the ants under control or your money refunded. **Set of 4 containers and Syrup, 75c, f. o. b. Medford.**

TREE TANGLEFOOT

banded around shade or fruit trees will prevent crawling insects getting into your trees. Stays sticky for weeks. No mixing necessary, ready for use, quickly applied with paddle. **Lb. can 65c; 5 lb. can \$2.75, f. o. b. Medford.**



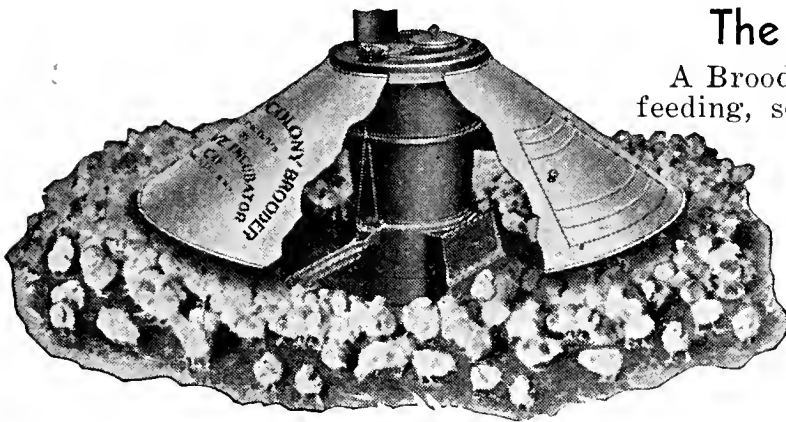
GRAFTING WAX—We manufacture our own wax, using the best formula obtainable. This is a high grade preparation. Easy to handle. For pruning or grafting or for covering fresh cuts. **$\frac{1}{4}$ lb. 15c; $\frac{1}{2}$ lb. 25c; 1 lb. 35c; 10 lbs. \$3.00.**

When ordering observe whether items are postpaid or f. o. b. Medford

Buckeye Colony Brooders

Biggest Brooder Values Ever Offered the Public

The Coal-Burning Buckeye



A Brooder that burns hard or soft coal, is self feeding, self-regulating, simple, safe and everlasting. Nothing to break—nothing to wear out. Equipped with a double automatic regulator that absolutely controls the temperature every minute of the day and night. Stove is of heavy cast iron, equipped with rocker grate. Self-cleaning and anti-clog.

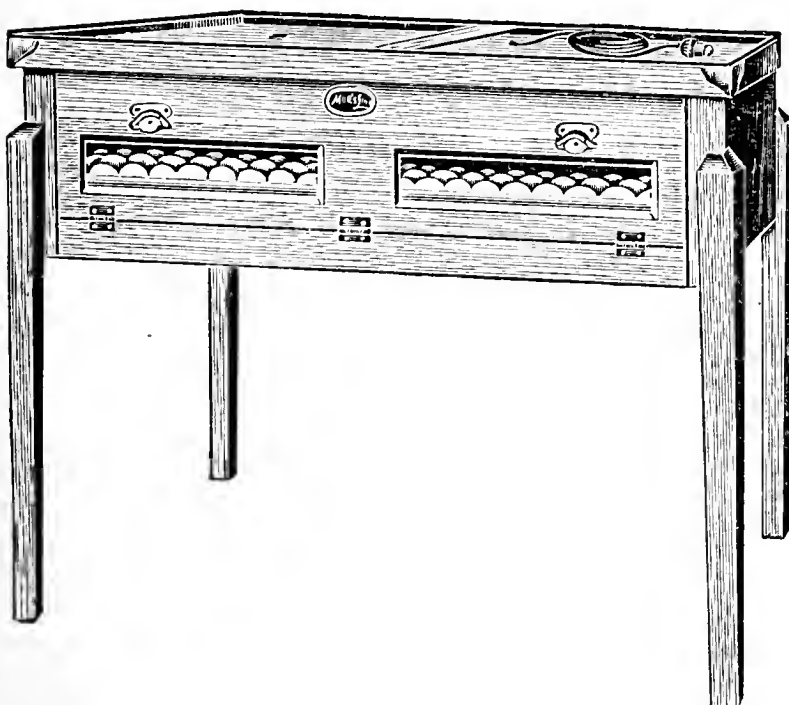
THE BUCKEYE REVOLVING BROODER CANOPY

All Coal-Burning Brooders are equipped with a revolving canopy, having two doors, eliminating the canopy bail, rope and pulleys, and permitting easier cleaning around the Brooder. Note the following coal capacity, size, and weight of stoves, diameter of canopies, size of grates, and compare them with other Coal Burning Stoves of the same chick capacity on the market today.

	No. 117	No. 118	No. 119
Chick Capacity	350	500	1000
Height of Stove.....	20 in.	20 ⁷ / ₈ in.	23 ⁷ / ₈ in.
Diameter of Base.....	11 in.	12 ¹ / ₈ in.	13 ¹ / ₂ in.
Diameter of Grate.....	8 ¹ / ₄ in.	9 ³ / ₁₆ in.	10 ⁹ / ₁₆ in.
Diameter of Canopy.....	42 in.	52 in.	56 in.
Coal Capacity	23 ¹ / ₂ lbs.	36 lbs.	58 lbs.
Smoke Pipe	4 in.	5 in.	5 in.
Shipping Weight	75 lbs.	95 lbs.	130 lbs.

WRITE OR SEE US FOR PRICES

MOE'S ELECTRIC INCUBATORS



Moe's ELECTRIC INCUBATORS are made of California redwood, with insulated walls and the same high grade construction characteristic of Moe's line of poultry supplies. Fitted with highly efficient electric heating element, simple to operate and care for. Have reliable automatic thermostatic control which is easily regulated to the right temperature. PATENTED EGG-TURNING TRAYS. All the eggs are turned with one push or pull of the handle, easier and quicker, and better than turning by hand. Heavy wire bottoms will not sag and easy to keep clean. Each machine is complete with electric cord and plug ready to connect to a light socket. For 110 volt light circuit. Height to top of cabinet, 32¹/₂ inches.

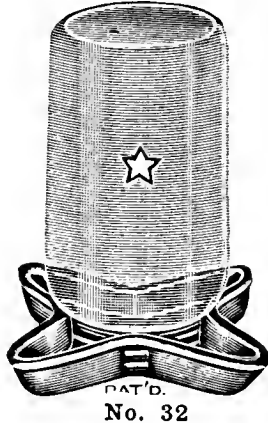
No. 379, 85 egg capacity; shipping weight, 75 lbs.	Price each.....	\$24.00
No. 380, 150 egg capacity; shipping weight, 90 lbs.	Price each.....	29.00
No. 381, 300 egg capacity; shipping weight, 120 lbs.	Price each.....	38.00

Prices f. o. b. Medford, Oregon

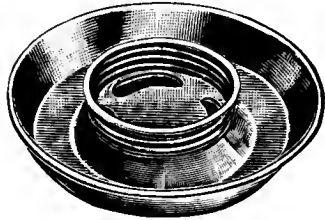
Poultry Equipment

F. O. B. Medford Unless Otherwise Noted.

STAR FOUNT, No. 32—A popular Mason Jar attachment for water. Fits any mason jar. Each, 10c; Per Doz., \$1.00, postpaid.



No. 32



No. 142

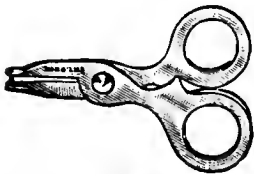
ROUND JAR FOUNTAIN, No. 142—Fits any Mason Jar. Being round it will serve more chicks. Easy to clean. Each, 13c, postpaid.

TOP FILL FOUNTAIN Nos. 1, 2, and 4.—Made of heavy galvanized iron, with double walls, which keep water cool in summer and retard freezing in winter. Feeds automatically. Fills from the top like an ordinary pail and is as easily cleaned.



Nos. 1, 2 and 4

No. 1—1 gal. capacity; wt. 4 lbs.; each, \$1.50
 No. 2—2 gal. capacity; wt. 6 lbs.; each, \$2.50
 No. 4—4 gal. capacity; wt. 9 lbs.; each, \$3.00



No. 39



Petty's

POULTRY PUNCHES —

Practical punches for marking baby chicks. Punch clean holes in the web of the foot.

Petty's Punch. Each25c
 No. 39. Punch. Each.....50c



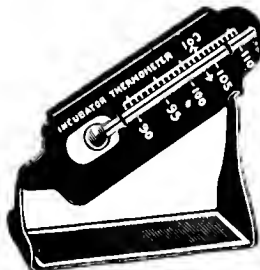
No. 138

HEAVY TIN BUTTERMILK FEEDERS—Feeding troughs in tin plate. Sliding top. Easy to clean. No seams, rivets or solder. Will not poison chicks as do galvanized feeders. A clean, sanitary buttermilk feeder.

No. 137—Lgth. 10 in. Wt. 1 lb. 35c each, postpaid.
 No. 138—Lgth. 20 in. Wt. 2 lb. 50c each, postpaid.

INCUBATOR THERMOMETERS — Tested and tried.

Standard. Each\$0.75
 Certified. Each 1.20

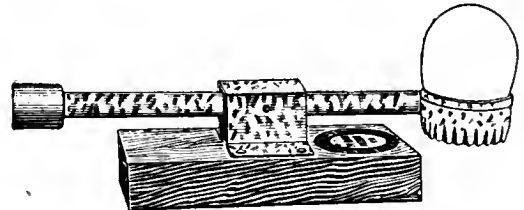


No. 462

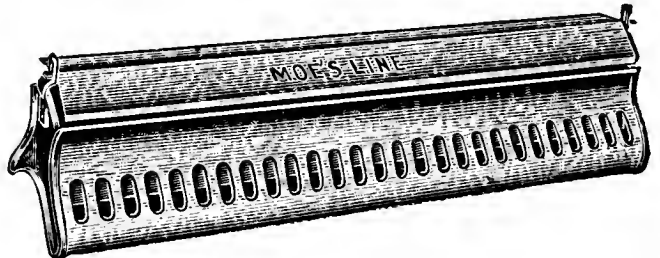
DIXIE FEEDER

DIXIE CHICK FEEDER No. 462—Made of best quality galvanized steel accurately stamped. The round troughs are easily filled and cleaned and have a turned in flange to prevent waste of feed. Width of trough 3 inches. Fitted with heavy wire top guard to keep chicks out of feeder.
 No. 460—18 in. length, wt. 1 lb.....30c, postpaid
 No. 462—30 in. length, wt. 2 lbs.....40c, postpaid

MOE'S EGG CARRIERS—The Safety First Parcel Post Egg Carrier. One that will take hatching eggs to their destination in perfect condition. Comes complete with wrappers, fillers and gummed address label.
 15 egg size, each, 30c; 30 egg size, 50c each.



PETALUMA EGG SCALE—Recognized as the favorite egg scale. Made in three sizes, 19, 22 and 24 oz. scales. Each 50c, wt. 8 ozs.



No. 141-T

MOE'S TILTING TOP LARGE CAPACITY CHICK MASH FEEDER—No. 141-T.—A fine feeder for large or small flocks. Tilting or swinging top guard will not allow chicks to dirty the feed. Capacity 17 quarts, length 35 inches, width 8 1/2 inches, height 9 inches. Has 27 feeder openings on each side or a total of 54 feeder holes. Packed one in a carton. Shipping weight, 9 lbs. Price, each \$2.25, postpaid.

ALUMINUM LEG BANDS—These bands bear numbers from 1 to 1000. If desired in special numbers please notify. 1 doz. 15c; 2 doz. 25c; 50 for 40c; 100 for 65c.

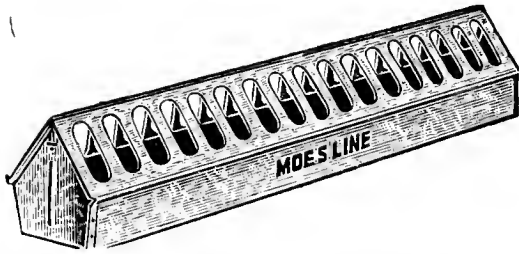


CELLULOID SPIRAL LEG BANDS—Universally used band markers, come in 8 colors and in different sizes to fit all breeds.

Leghorns, doz. 10c; 50, 30c; 100, 50c.
 R. I. Reds, doz. 15c; 50, 40c; 100, 60c.
 Plymouths, doz. 15c; 50, 40c; 100, 60c.
 Turkey, doz. 20c; 50, 60c; 100, \$1.00.
 Please state color wanted.

Buy "Madrona Brand" Feeds.

POULTRY EQUIPMENT—Continued

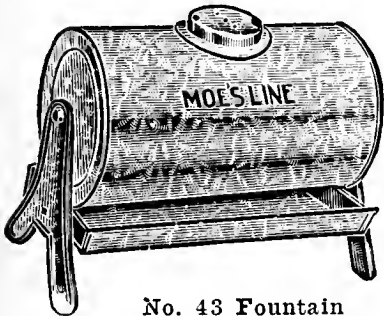


No. 155 Buttermilk Feeders

NO. 155 TIN PLATE BUTTERMILK FEEDER—

Large capacity feeder and waterer made of heavy charcoal tin plate. Carefully soldered. Fine for growing pullets. Length 32 in., width 8 in., depth of pan 3½ in., total height 7 in. with 34 feeder holes. Capacity 3 gals. Weight when packed, 6 lbs. **Each, \$1.90.**

NO. 43 HORIZONTAL CLEANER FOUNTAIN



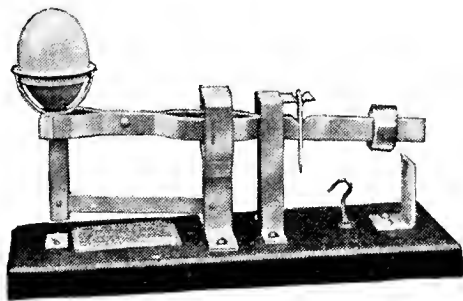
No. 43 Fountain

is a new type of fount with large capacity. Holds 10 gals. water and swings on a pivot. Filling opening 5 in., handy for cleaning. Shipping wt. packed, 20 lbs. **Each, \$4.75.**



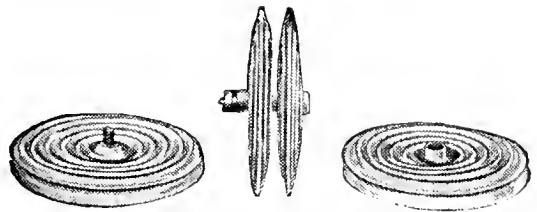
No. 458 Chick Feeders

NO. 458 CHICK FEEDER—Swing top for chicks and growing stock. Heavy galvanized steel with generous size trough and fitted with tilting top. Ht. of pan 2¼ in., width 4¼ in., lengths 12 in. Shipping wt. 3 lbs. **Each, 35c.**



Tru-Way Egg Scale

TRU-WAY EGG SCALE—Just drop the egg on the scale and immediately you have the true grade or weight per dozen. It is the most accurate and fastest operating scale on the market. Shipping wt. 2 lbs. **Price each, \$2.25.**



Thermostate Wafers

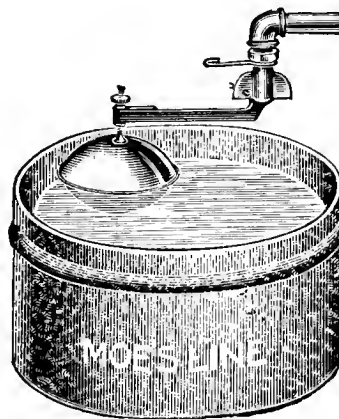
THERMOSTAT WAFERS—Renew your brooder wafers each year to prevent loss through inaccurate firing. The same applies to incubators. Double unit wafers, size 3 in. diameter, shipping wt., 1 lb. **Each, 40c.**

NO. 159 GEM CHICK FOUNTAIN—

For water. Very popular and practical for chicks or grown fowl. Made of galvanized steel, accurately stamped and formed. Easy to fill and clean. Capacity 2 gals. Shipping wt. 3 lbs. **Price each, 90c.**

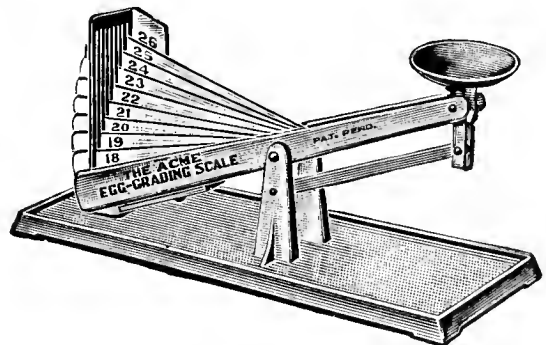


No. 159 Fount



No. 30 Float

NO. 30 FOUNTAIN FLOAT—A perfect automatic valve and float, to regulate the flow of water to a drinking dish or trough. Valve mechanism entirely brass, nickel finish with nothing to rust. Shipping wt. 1 lb. **Each, \$1.00.**



Acme Egg Grading Scale

ACME EGG GRADING SCALE—Tells you immediately the exact and correct weight of the egg. No moving of weights or guessing at weight. Grading is done in half the time and more accurately. The best egg scale we have ever offered. The scale will pay for itself in time saved, the first month in operation. **Price each \$3.00, postpaid.**

Flex-O-Glass

*For Health, Warmth & Economy
Use in place of Glass*



USE IT TO KEEP OUT WINTRY WINDS AT ONE-EIGHTH THE COST OF GLASS AND BETTER.

FLEX-O-GLASS is indispensable for poultry house openings, hotbeds, sleeping porches; in fact, you will not be without it once you have used it. A hammer, some tacks and a shears is all that is necessary to install **FLEX-O-GLASS**.

FLEX-O-GLASS admits the valuable ultra-violet rays of the sun. It is weatherproof and waterproof. The hot summer sun has no effect upon this material. Put chicks in Flex-O-Glass brooder houses. The ultra-violet rays will keep them free from rickets. You'll get broilers for market and laying pullets a third earlier. Use it on your hotbeds, and if you wish to enjoy solid comfort, enclose your sleeping porches with Flex-O-Glass.

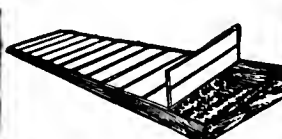
SPECIAL TRIAL OFFER—Send \$4.50 for 15 yards of Flex-O-Glass, postpaid to your station. If you desire larger rolls we can supply in any quantity at the same price, per yard as in 15 yard rolls. In less than 15 yard rolls our price is 40c per yard, postage paid.



Extra eggs or chicks saved pay for this Flex-O-Glass ScratchShed in a few days.



Ideal for enclosing porches, health rooms, covering screen doors, etc.



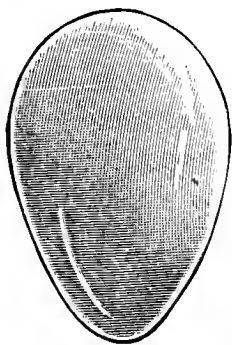
Flex-O-Glass hotbeds grow plants quicker and much stronger.



Easily nailed on barn, chicken coop, hog house and garage windows.

"Madrona Brand" Feeds are Better.

POULTRY EQUIPMENT—Continued



CHINA NEST EGGS
Each, 5c. Dozen, 50c
Postpaid.

CAMPHORATED NEST EGGS

Lice repelling nest eggs. Keep your hens free from lice and mites.

Each, 10c. 3 for 25c
Postpaid.

BROODER STOVE PIPE AND ELBOWS

Two feet length black sheet iron pipe, elbows of same material.

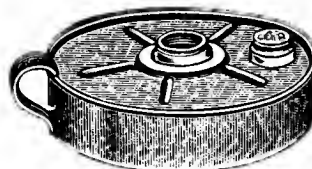
- 4 inch diameter, per length.....30c
- 5 inch diameter, per length.....30c
- 4 inch elbows, each.....30c
- 5 inch elbows, each.....30c

LAMP WICKS

For your incubator or brooder lamp.

- No. 1 burner 3c each. No. 2 burner 5c each.
- No. 3 burner 5c each.

INCUBATOR LAMP BOWLS, CHIMNEYS AND BURNERS



Heavy galvanized iron bowls for incubators, brooders and grafting wax pots.

- No. 100 bowl, 6 in. diameter, takes No. 1 burner, wt. 1 lb. Each.....70c
- No. 101 bowl, 6¾ in. diameter, takes No. 2 burner, wt. 2 lbs. Each.....80c
- No. 102 bowl, 8 in. diameter, takes No. 3 burner, wt. 2½ lbs. Each.....90c

CHIMNEYS FOR LAMP BOWLS

- No. 108 fits No. 1 burner. Ea. 30c
- No. 103 fits No. 2 burner. Ea. 30c
- No. 104 fits No. 3 burner. Ea. 30c


LAMP BURNERS

- No. 1 burner. Each.....35c
- No. 2 burner. Each.....60c
- No. 3 burner. Each.....85c



LEE-WAY POULTRY PREPARATION

**"SAVES
so many
CHICKS"**



GERMOZONE

For more than a third of a century, remedies devised and manufactured by the Geo. H. Lee Co. have been recognized as the highest in effectiveness and most dependable.

VAPO-SPRAY and LEEMULSION

These "twin remedies" have been used with best success for many years by thousands of flock owners in the treatment of diseases of the breathing passages. Simply spray Vapo-Spray in the air of the poultry house. Its soothing, germicidal oils, in vapor form, are breathed down through head, throat and windpipe. Leemulsion, fed in the mash, allays cough and reduces temperature. **ONE WORKS FROM THE INSIDE OUT AND THE OTHER WORKS IN FROM THE OUTSIDE.** A common sense treatment.



Vapo-Spray— 32-oz. can, 75c; 1/2-gal. can, \$1.25; gal. can, \$2.25. Leemulsion—12-oz. bottle, \$1.25; 32-oz., \$2.25. F. O. B. Medford.

Quickly corrects, and prevents simple diarrheas and digestive disorders. Destroys molds and bacteria *in the crop* as well as in the drinking water. A teaspoonful to the quart of water three times a week. Just as valuable for grown fowls. Wonderful for Ocular Roup, Limberneck and many other ailments, requiring individual treatment. 4-oz. bottle, 40c; 12-oz., 75c; 32-oz., \$1.50; half gal., \$2.50. F. O. B. Medford.

LEE'S POULTRY NASAL SYRINGE

For administering Germozone in the treatment of Ocular Roup, Swelled Head, Colds. Forces out the mucus matter and applies the Germozone directly to the affected membrane lining. Used by leading poultrymen everywhere. 75c.



LEE'S LICE KILLER

Destroys Mites and Lice at one-half the usual cost.—Simply paint roosts and dropping boards. Fumes kill the body lice. To destroy mites, spray liberally throughout the poultry house once a year with this disinfectant diluted one-half. It has no equal. **Qt. can, 60c; one-half gal., 90c.** Prices f. o. b. Medford.

LEE'S HOG OIL WORMER

Chenopodium is the only recognized drug for expelling Large Round Worms from hogs and pigs. Lee's Hog Oil Wormer contains an effective dose of Chenopodium, put up in a bland oil. Not caustic; better for the animals; much safer. **1/2-gal. bottle, \$3.75; gal., \$7; f. o. b. Medford.**

WORM

YOUR *Birds*

with

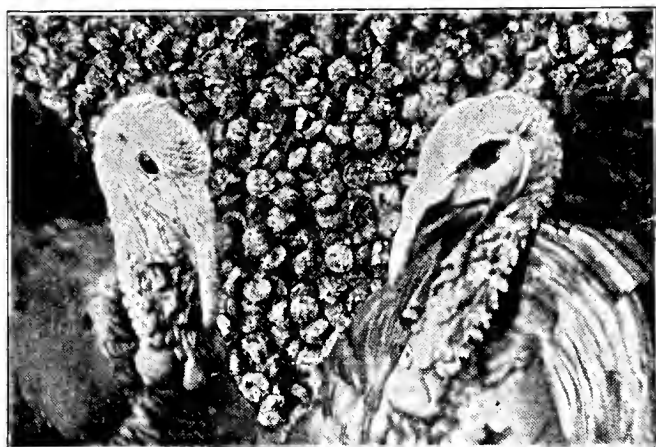
The **GIZZARD CAPSULE**



Gets All 3 Kinds of Worms

Most fowls have Tapes and Ceca or Pin Worms as well as Round Worms. All three kinds greatly reduce egg production. The Gizzard Capsule is most effective against Large Round, Large Tape and Pin Worms, because it does not depend upon only one drug for each kind but has two or more expellants for each kind. And its medicine is carried through to the gizzard in the patented insoluble coating. Safe, and sure of best results.

Adult size—50-cap. pkg., \$1; 100-pkg., \$1.75; 250-pkg., \$4; 500-pkg., \$7. Pullet size, for half grown birds and adults of light breeds—50-pkg., 75c; 100-pkg., \$1.35; 250-pkg., \$3. Chick size—50-cap. pkg., 50c. Prices f.o.b. Medford. Excess postage returned.



ENJOY . . .

Greater Turkey Profits!
 Raise Them From Babyhood to
 Maturity On . . .

CROWN



Komplete
 Komprest **FEEDS**

CROWN TURKEY FEEDS (Pellets) PRODUCE MEAT AT A LESSER PER POUND MEAT COST. Turkey raisers who feed Crown Turkey Pellets harvest the greatest percentage of birds on the earlier markets. Mr. and Mrs. W. E. Hammel of Eagle Point, Oregon, with one flock of 1400 birds, hatched between April 17th and May 18th sold the entire flock at Thanksgiving, except for 250 birds mentioned in the following letter, which were sold earlier in the season. Compare this record with the general run of flocks, where only about an average of 50 per cent of the birds were ready for the market at Thanksgiving. **CROWN TURKEY FEEDS** produce earlier turkeys, and, too—**CROWN** fed birds are prime, full-breasted, better flavored and the most profitable at killing time.

Eagle Point, Oregon,
 December 14, 1933.

Gentlemen:

On October 22nd, this year, we killed and shipped 250 toms and hens which netted us 21c per pound. All but 5 of these birds were prime. The average weight was 16 pounds. Crown feeds gave us these early birds. Very truly yours,

Mr. and Mrs. W. E. Hammel.

CROWN KOMplete - KOMPREST TURKEY STARTER is a complete feed in itself. You need no other grains. **K-K Turkey Starter** contains the necessary vitamins, minerals and concentrates to build sturdy poults at a minimum of Cost. Start your poults right. Start with **CROWN**.

Here's What Another Crown User Had to Say About His Flock:

"One of my neighbors sold 122 turkeys which brought him \$175 at Thanksgiving time. I used Crown Feeds and my birds were hatched three weeks later. My shipment of 82 birds brought me a check for \$170, an average per bird of \$2.07 while the neighbor's average was \$1.43. I had no seconds while he had a heavy per cent of off-grade turkeys."

(Name on file in our office.)

CROWN KOMplete - KOMPREST TURKEY GROWER, like the Starter is complete. One of the leading poultry buyers of the Southern Oregon district made this statement: "When receiving turkeys I can without trouble pick the Crown fed birds and Crown fed birds run consistently 95 per cent prime or firsts." Isn't that proof that Crown Feeds really do the work better? Keep your poults on **K-K TURKEY STARTER** until the 6th week and then switch to **K-K TURKEY GROWER**. You'll never regret feeding **CROWN**.

Another Turkey Raiser Tells Us This:

"Gentlemen:

". . . and I sold 50 birds on the Thanksgiving market which returned me \$123.57 or an average of \$2.47 per bird. My cost for Crown Turkey Feed, which I fed exclusively, was \$1.18 average. My gross profit per bird was \$1.29. Crown feeds for me!"

(Name on file in our office.)



CROWN KOMplete-KOMPREST TURKEY FINISHER will give your birds that "prime" finish which brings the top market price. **FINISHER** should be fed alone. It contains every needed ingredient to bring your birds up to the highest grade.

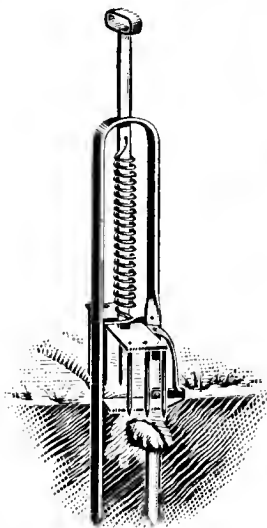
You can't go wrong with Crown Feeds. Price information on request.

Garden and Farm Equipment



“CYCLONE” SEEDER is the most widely known and used seeder of all broadcast seeders. The working parts are all attached to a rigid frame of kiln-dried lumber. Built into this is a sloping feed-board that forms the bottom of the seed compartment. It is unnecessary to tilt the machine as gravity keeps the seed flowing down to the outlet until seed bag is empty. Shipping weight 5 pounds. Price, \$2.50
Please add postage to items not postpaid.

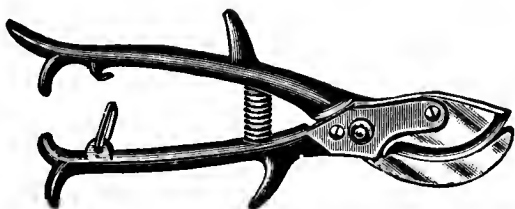
REDDICK MOLE TRAP. The most popular Mole Trap on the market. Made in tinned steel. Japanned steel coil spring. Six steel prongs, 5 inches long. Simple, safe and strong. Pulling up the plunger rod of this trap the trigger catches itself, making it a self-setting trap. The Reddick works perfectly in loose soil, but in case of packed or hard soil we do not recommend it. The **OUT-O-SIGHT** trap is the best trap for use in soil that is pebbly, rocky or packed. Weight 4 lbs. Each, \$1.50.



Reddick

TRIM AND PRUNE IN COMFORT WITH A DOO-KLIP

Trim your lawn the easy way. **DOO-KLIP GRASS SHEARS**—the unique shear that takes all the wrist-tire and finger-ache out of lawn trimming. The easy, natural up-and-down operation does it. Price each, \$1.35, weight 2 pounds.

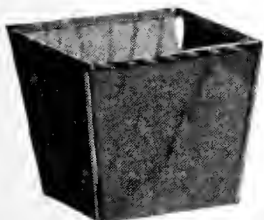


PRUNING SHEARS. We can supply all types of shears made of the best materials.

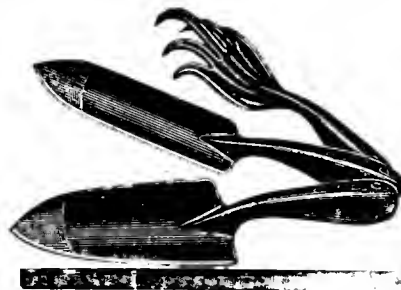
WISS PRUNING SHEARS, weight 1 lb., \$1.50 each.

SUNSET SHEARS, weight 1 lb., \$1.00 each.

MOE'S ROSE SHEARS. A lady's rose pruning shears, nickel plated, length 5 inches, weight 1 lb. \$1.25 each.

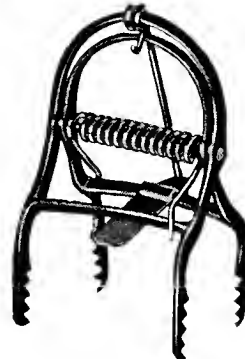


TIN-TOP BERRY CUPS. This is the standard Florin Pint Berry Cup, which has been in use in the West for the past 20 years. Well made, non-satin metal tops and made of heavy veneer. Per 100, 85c f.o.b. Medford. Write for quantity prices.



MOE'S THREE PIECE GARDEN SET. Made of heavy pressed steel, handsomely finished. Shipping weight 2 lbs.

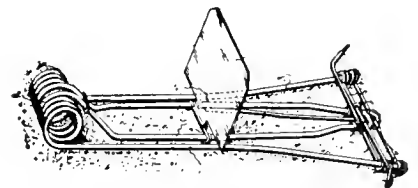
Set of three tools 75 cents. Add 15c for postage and packing.



OUT-O-SIGHT MOLE TRAP.

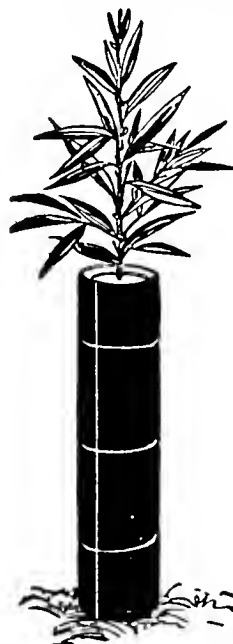
Absolutely reliable. Directions for setting and full directions of the moles habits furnished with each trap. Heavy powerful springs, malleable iron jaws. Teeth designed so as not to injure the hide. Height 8½ inches. Spread of jaws 2¾ inches. Weight each, 1½ lbs. Price, \$1.35.

MACABEE GOPHER TRAP. There are more Macabee Traps sold than all other makes combined. They are inexpensive and very efficient. Designed for exterminating the wily Pocket Gopher. Weight ½ lb.



Price, each25c

YUCCA TREE PROTECTORS



A Fiber, Wire Banded Protector for Fruit and Shade Trees

Our Yucca Tree Protectors protect your trees from winter freezes, rabbits, borers, squirrels and sun-scald. Yucca is by far the best veneer that has ever been found for Tree Protection. It is fibrous and admits plenty of light and air and is pliable. The wires going entirely around the protector holds it in place even if it cracks some with wear.

	Weight per M.	Price small lots	Per 100 500 lots	Per 1,000
14 in.	90 lbs.	2c each	\$1.75	\$15.00
16 in.	100 lbs.	2½c each	1.85	16.00
18 in.	125 lbs.	2½c each	2.15	20.00
24 in.	150 lbs.	3c each	2.50	22.00

Packed in bundles of 25. We do not split bundles.

Space Won't Permit Our Listing all of Our Line. Come in and get Acquainted.

Farm Supplies

Prices F. O. B. Medford

Our stock of supplies for the farm will be found complete. Tonics, Remedies, Dairy Supplies, Feeds, etc., are a part of the large stock we carry, some of which are not found in our catalog. We solicit your inquiry when in the need of items you do not find listed herein. We have them and the prices will be right.



KOW - KARE makes poor cows better and makes more money for cow owners. Prevents abortion, retained after-birth and cures barrenness.

CORONA WOOL FAT COMPOUND—Corona is unexcelled for barbed wire cuts, bruises, caked udders, sore shoulders, collar boils, scratches, cracked hoofs, etc. **Small can 65c.**

DR. ROBERTS PHYSIC BALLS—Like all of these famous stock remedies Physic Balls will do the work. **Pkg. 50c.**

DR. ROBERTS CALF CHOLERA REMEDY—Used for the prevention and to overcome scours in all livestock. **8 oz. can, \$1.00.**

PINE TAR—Used for coughs and colds in stock and in case of distemper. **Half lb. can 35c.**

Medium Cans, weight 2 lbs.....**\$0.65**
Large Cans, weight 4 lbs..... **1.25**

BAG BALM—A soothing, penetrating ointment for bunches, caked bag, cuts, sore teats, chapping and inflammation of the udder. Gives quick relief and cures. **Pkg. 60c; weight half lb.**

GRANGE GARGET CURE—A positive cure. Never equalled in effectiveness. **Pkg. 70c; weight 2 lbs.**

DR. ROBERTS COW CLEANER—For cows and heifers, for expelling the afterbirth. To prevent retained afterbirth. **1 lb. can \$1.**

DR. ROBERTS LAXOTONIC—For constipation, paralysis or stoppage of the bowels in livestock. **4 oz. can 50c.**

ALBER'S CALF MEAL—Raise the calves. Keep the heifers of the best cows to replace the poorer members of the herd. Calf Meal will raise a calf just as well as whole milk. Save the whole milk. Sold on a money-back guarantee. **25 lb. sack, \$1.35.**

Write for quantity prices.



DR. C. J. KORINEK'S SUNSHINE MINERALS GUARANTEED

SUNSHINE MINERALS—The food supplement for Chickens, Cattle, Sheep, Hogs and Turkeys. Serious nutritional problems have arisen in recent years to baffle the producer of milk, eggs and beef. In their wild state where a few had almost unlimited access to natural conditions farm stock and poultry had an abundance of the elements necessary to meet their mineral requirements. These requirements were limited, however, to simple body growth and maintenance and reproduction. But under the stress of economic necessity, man has, by selective breeding and more intelligent attention to nutrition, speeded up all of the processes of production. For all this he must pay the price of careful and scientific attention to the mineral requirements of their bodies under this intensive process. Sunshine Minerals take care of mineral deficiencies. Don't let your livestock and poultry starve for minerals. Feed Sunshine Minerals in their feed or place it in the salt. Your mineral worries are over when you feed Sunshine. Very economical and guaranteed good. **Per cwt., f. o. b. Medford, \$2.75.** Feeding instructions in every bag.

Write for Our Feed Prices

CURE *and* SMOKE MEAT

At the Same Time

Morton's SMOKE SALT Does the Entire Job Easier - Quicker - Safer

This improved Sugar-Curing SMOKE-SALT has made meat curing such a simple, easy job for more than 500,000 farmers.

Morton's SMOKE-SALT does the entire job of salting, sugar-curing, and smoking your meat, *All at the same time*. Does it quicker—makes the cure safer and gives a most tempting, delicious flavor to the meat. That is why there are many thousands more families using MORTON'S SMOKE-SALT than any other kind.

Be sure to use it this season. It will give you the finest flavored hams and bacon ever brought to your table.



Same Time—Save Labor—Use Morton's Smoke Salt

A New BETTER WAY to Make SAUSAGE



Morton's Sausage Seasoning is the greatest convenience ever developed for those who make sausage. It eliminates all guess-work—it is the one sure way to always get good sausage—the kind that "hits the spot" in taste and flavor. It's so easy to use. Nothing to add

or mix. In one handy can of MORTON'S SAUSAGE SEASONING is combined all the seasoning ingredients needed for making the finest sausage you ever tasted. So economical, too—a 25c can is enough to season 30 lbs. of sausage.

Sausage Seasoning postpaid, 35c per can.

If you want the finest flavored meat ever brought to your table—hams and bacon with that delicious, tempting flavor—then **DON'T FAIL** to use Morton's Sugar-Curing SMOKE-SALT this season. One you try this modern, popular meat cure, you will never go back to the old method again. It's so much easier quicker and better. It adds a richer, finer flavor to your meat and improves its keeping quality.

Morton's SMOKE-SALT is the blending together in one convenient product the highest grade meat Salt, a perfectly balanced Sugar Cure, and refined, condensed Wood Smoke. You use it just like any meat salt but the results are far superior. It strikes into the meat quicker.

Smoke Salt, per can at our store, \$1.00; postpaid to and including third zone, \$1.30.

Planet Jr. Tools

Planet Jr. No. 4 Hill and Drill Seeder and Single Wheel Hoe.
Price, \$19.00 f.o.b.

Medford. Shipping wt. 50 lbs.
No. 4D
Seeder
Only



Price, \$15.50 f.o.b. Medford. Shipping wt. 40 lbs.

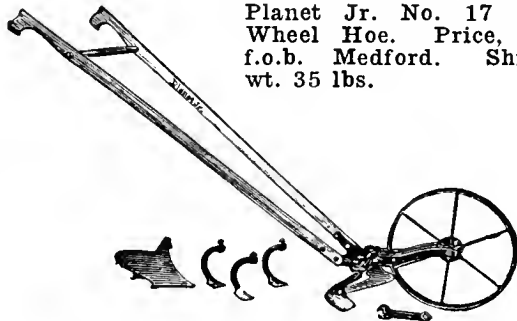
The No. 4 is a combination of the most useful tools for a moderate sized garden. Plants almost all vegetable seed in continuous rows or in hills 4, 6, 8, 12 or 24 inches apart. A plow adjustable for depth opens a straight narrow furrow, the seeds are dropped in it, are covered and the soil firmed and the next row marked out all in the same operation. Converted into a Single Wheel Hoe by changing one bolt. Cultivating equipment includes all the essential equipment for hoeing, weeding, cultivating, plowing, furrowing, ridging, etc. The tools are oil hardened and tempered and will wear almost indefinitely.

Planet Jr. No. 12 Double Wheel Hoe. Price, \$12.00 f.o.b. Medford. Shipping wt. 33 lbs.



Planet Jr. Double Wheel Hoes are almost universally used by professional vegetable growers. They will straddle the crop, working both sides of the row at once until the plants are 20 inches high. The No. 12 is the most popular double wheel hoe because it includes a complete assortment of equipment to do almost any gardening job.

Planet Jr. No. 17 Single Wheel Hoe. Price, \$8.50 f.o.b. Medford. Shipping wt. 35 lbs.



Planet Jr. Single Wheel Hoes are light, easily handled and do beautiful work. They are all steel except the handles—practically indestructible. The No. 17 is the most popular of all Wheel Hoes, as with it you can do all the work in a moderate size garden.

Planet Jr. No. 119 High Wheel Garden Plow. Price, \$3.90 f.o.b. Medford. Shipping wt. 20 lbs.



The Planet Jr. No. 119 is a sturdy, dependable high wheel garden plow. The frame is steel, the wheel is steel, with steel spokes. The cultivating attachments are oil-hardened and tempered and will give excellent service. Having a 24 inch wheel the No. 119 works easily in rough and uneven soil.

Planet Jr. No. 19 Garden Plow. Price, \$5.50 f.o.b. Medford. Shipping wt. 30 lbs.



The Planet Jr. No. 19 is an inexpensive, but sturdy and strong garden plow for the home garden. The sweep is fine for weeding, mulching and shallow cultivation. The cultivator teeth is for deeper cultivation and for making narrow furrows. The plow is for hilling, furrowing and light plowing.

Planet Jr. Jiffy-Hoe. Price, \$2.25. Shipping wt. 25 lbs.



The Jiffy-Hoe is the wheel hoe in its simplest form. It is inexpensive enough for the smallest garden, but does a very nice cultivating job, and will cut your cultivating time to one-quarter.

Reliable Sprayers for General Use



BROWN'S AUTO SPRAYS are in our estimation the best that money can buy in sprayers for all purposes.

AUTO-SPRAY NO. 9

As a general utility sprayer for garden work and small tree spraying there is no equal to this fine sprayer.

A sprayer that will pay its way in and around the poultry house, the



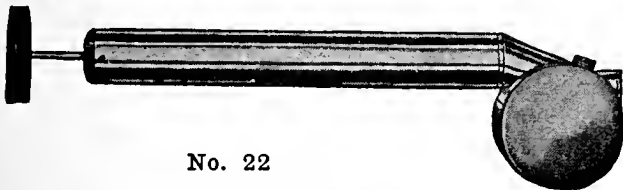
garden and barn. Can be used for all sprays. A few strokes to compress the tank is sufficient to empty the contents of the tank, made of heavy sheet brass or galvanized steel. We recommend the brass tank for the reason that it is immune from the destructive work of acids and will not rust or eat out. We quote both. Sprayer is not equipped with extension pipe.

No. 9B, Brass.....\$9.00
No. 9D, Galvanized..... 6.50

ARMSTRONG STANDARD SPRAY PUMP NO. 10

A spray pump of a hundred uses. Not merely a bucket pump. It is a bucket, barrel or knapsack pump as desired. The pump is made of heavy brass, will last a lifetime. Heavy pressure is obtainable with little effort.

Price of Pump, wt. 5 lbs.....\$6.00
Price of Knapsack, wt. 6 lbs..... 5.00



No. 22

AUTO-SPRAY NO. 22

An inexpensive hand sprayer, made of good material with heavy leather plunger which if kept oiled will last a long time.

Weight 2 lbs. Each.....50c

It Sprays Continuously

A compressed air, continuous sprayer made either in brass or galvanized. This hand sprayer has no equal. It cannot be compared to the cheaper hand sprayers. Its construction is superior in every detail. Illustrated across page. **Each \$1.50.**

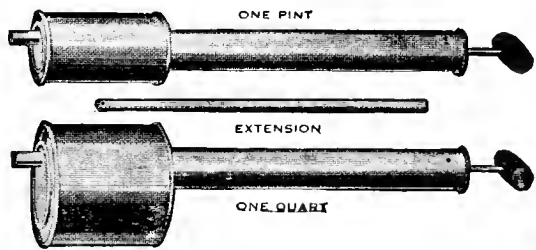
AUTO-SPRAY NO. 5

The Double Action High Pressure Sprayer. No. 5 is generally acknowledged to be the most powerful pump of this type manufactured, generates a pressure of 200 lbs. with remarkable ease.



Throws continuous sprays on both the up and down strokes and requires about one-half the energy of other pumps of this type. This pump is equipped with three changes of nozzles, a brass suction strainer, as well as another strainer in the nozzle. A double check against sediment or dirt. Suction end contains strainer, and is weighted to keep it in the bucket or barrel. If you once used this fine sprayer you would never go back to old types.

Price of Pump, weight 5 lbs.....\$5.00
Price of Knapsack, weight 6 lbs..... 3.75
Price of curved Extension..... .75



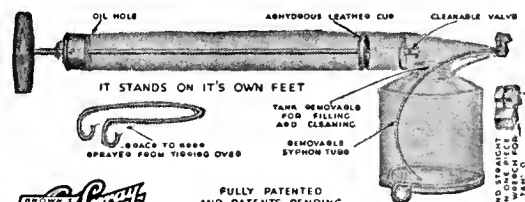
Duster Brown

DUSTER BROWN

A dust gun of inexpensive cost. Very heavily constructed, a dandy for small garden work.

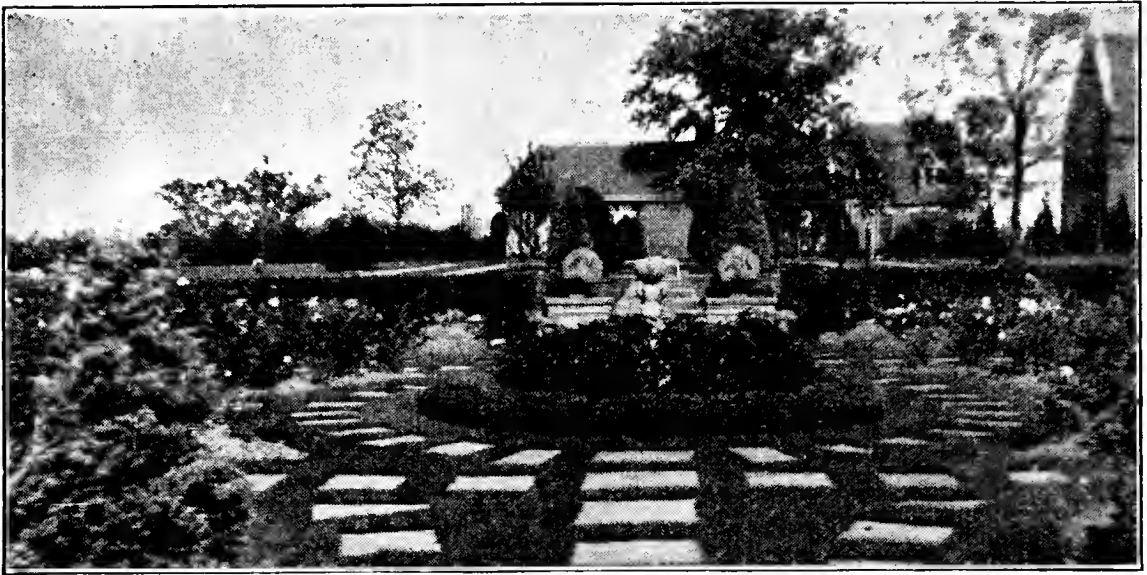
Pint size, wt. 2 lbs.....\$0.90
Quart size, wt. 3 lbs..... 1.25

AUTO-SPRAY NO. 26



FULLY PATENTED AND PATENTS PENDING

ANGLE AND STRAIGHT NOZZLE IN ONE PRICE ACTS IN YEAR '06

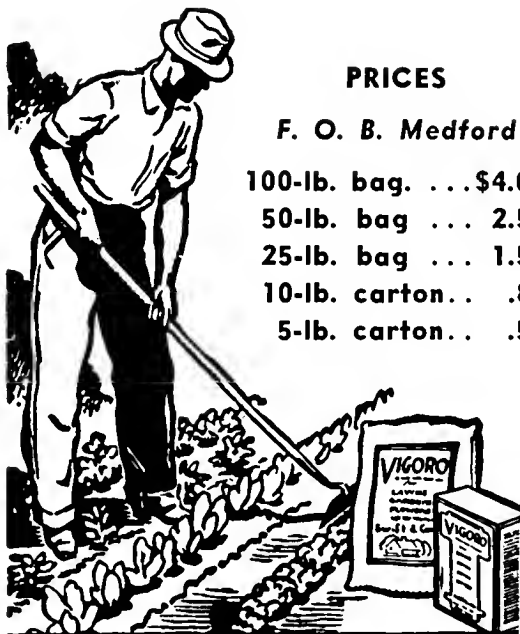


You Can Have a Beautiful Garden!

There are three things under your control which have an important bearing on the success or failure of your lawn or garden. They are good seed, right cultural practices, and proper plant feeding.

You'll get good seed if you buy it from us. Plants will be properly planted and cultivated if you follow our planting directions. And, your plants will be properly nourished if you feed them regularly with Vigoro, the complete plant food we recommend.

Vigoro is clean and odorless, containing all of the plant food elements plants must get from the soil. Each element is present in the right proportion, assuring a balanced plant ration. That's why Vigoro produces such amazing results—that's why it develops root as well as top growth. Be sure to order a supply of Vigoro with your seed. No other plant-feeding materials need be used with Vigoro. Complete directions for use in every bag and package.



PRICES

F. O. B. Medford

100-lb. bag . . .	\$4.00
50-lb. bag . . .	2.50
25-lb. bag . . .	1.50
10-lb. carton . .	.85
5-lb. carton . .	.50

VIGORO SPREADERS

Vigoro can be applied by hand or with a Vigoro Spreader. We recommend the use of a spreader because feeding can be done so much quicker and better. Vigoro Spreaders soon pay for themselves by saving time, labor, plant food and seed. They are suitable for the distribution of grass seed, salt, sand, insecticides and similar substances in addition to Vigoro. Adjustable to any rate of application, with force feed and convenient shut-off control operated from handle. Write for complete information and prices.

VIGORO

Complete plant food

Dog Foods and Medicines



SPRATT'S DOG MEDICINES

Are known world-wide for quality and dependability. Doctor your dog with these good remedies. A stitch in time saves nine. If your dog is not feeling well, write us at once for Spratt's book on the care and feeding of dogs. It's free for the asking.

Prices on remedies are f. o. b. Medford. Add 5c per package if ordered by mail.

SPRATT'S WORM CAPSULES

For grown dogs; for round, maw and tape worms. **65c pkg. Postpaid.**

SPRATT'S PUPPY WORM CAPSULES

May safely be given to 6 weeks old puppies. **65c pkg. Postpaid.**

SPRATT'S SPECIAL TABLETS

For treating Distemper. State if wanted for puppies or older dogs. **\$1.05 pkg. Ppd.**

SPRATT'S MANGE MEDICINE

For treating mange troubles. **\$1.00 Ppd.**

SPRATT'S EAR CANKER OINTMENT

For both external and internal forms. **85c pkg. Postpaid.**

SPRATT'S CONSTIPATION TABLETS

A gentle and effective laxative. **65c pkg.**

SPRATT'S DIGESTANT TABLETS

For indigestion. **65c pkg. Postpaid.**

SPRATT'S CHOREA TABLETS

For Chorea or St. Vitus Dance, Fits. **65c pkg. Postpaid.**

ILAK SHAMPOO

Rids the dog of fleas and keeps the hair glossy and fresh smelling. **6 oz. bottle 50c; 15 oz. size \$1.00; quart size \$2.00.** Add 10c bottle for postage.

SPRATT'S DIARRHEA TABLETS. 60c pkg. FLEA POWDER

Rids your pet of fleas instantly. **25c pkg.**

SPRATT'S DOG FOODS

Cannot be excelled for maintaining perfect health in dogs. Feed Puppy Cakes to your puppies to help them teeth.

Spratt's Dog Cakes (containing meat and the finest cereals) will keep your dog on his toes all the time.



SPRATT'S DOG CAKES

A meaty, crisp biscuit that should be the staple diet of all large dogs.

SPRATT'S FIBO

A granulated food that is especially nourishing and appetizing.

SPRATT'S CHARCOAL OVALS

Every dog and puppy should have a full meal of these biscuits once or twice each week. Stomach conditioner and gas absorber.

SPRATT'S OVALS

A small oval biscuit that is relished by all dogs, large and small.



Prices on Spratt's Dog Foods

- DOG CAKES** 4 lbs. for 60c
- CHARCOAL OVALS** 4 lbs. for 70c
- FIBO** 4 lbs. for 70c
- OVALS, plain** 4 lbs. for 60c

Write for quantity prices. Prices are f. o. b. Medford.

SPRATT'S CAT FOOD

Contains dried fish, cereals and milk. A mighty fine food for the cat or kitten. **Pkg. 1 1/2 lbs. 35c f. o. b. Medford.**

A BARGAIN IN BIRD CAGES



We offer a very substantial cage, electrically welded, heavily constructed, neat in design, done in four colors, red, blue, green and tan, fully equipped with perches, and cups with spring for suspending either from a stand or cage bracket at a much reduced price. In fact this cage a few years ago, sold for as much as \$6.00. We will send this cage to you, postage paid to and including the third zone for (Be sure to state color wanted).....**\$2.15**

INDEX

Page		Page	
Alfalfas	28	Flex-O-Glass	46
Antrol	42	Flower seeds	31-36
Arsenate of Lead	40	Garget Cure	50
Bag Balm	50	Gas Balls	39
Barley	23	Gopher Traps	49
Beans	4-5-27	Gladiolus	37
Beets	6	Grasses	21-22
Berry Plants.....	Back Cover	Hot-Kaps	26
Black Leaf "40".....	39-42	Incubators	43
Bluestone	39	Kale	10
Bordeaux	41	Kanota Oats	23
Broccoli	7	Kentucky Blue Grass.....	22
Brome Grass	22	Kohl Rabi	10
Brooders	43	Kow-Kare	50
Brussels Sprouts	7	Ladino Clover	29
Bulbs	37-38	Lawn Grasses	30
Cabbage	7	Leek	11
Carrots	8	Lettuce	11
Calf Meal	50	Lice Killers	47
Calf Scour Remedy.....	50	Lilies	38
Cannas	38	Mangel Wurzels	6
Casabas	12	Millets	24
Cauliflower	8	Mole Traps	26-49
Celery	9	Muskmelons	12
Clovers	27	Mustard	11
Copper Carbonate	39	NAPthalene	42
Corn, field	24	Nitragin	25
Corn, sweet	10	Oats	23
Cow Physic	50	Okra	14
Cucumbers	9	Onions	14
Cultivators, garden	52	Onion Sets	14
Dahlia Bulbs	37	Onion Plants.....	Back Cover
Dog Foods	55	Orchard Grass	21
Dog Remedies	55	Parsley	16
Dusters	53	Parsnip	15
Dusts, garden	40-41	Peas	15
Drink Founts	44-45	Peonies	38
Egg Scales	44-45	Peppers	16
Fertilizers	54	Planet Jr. Goods	52
Flea Powder	42	Potatoes	20
		Poultry Remedies	47
		Poultry Supplies	44-48
		Poultry Wormer	47
		Pruning Shears	49
		Pumpkin	16
		Radishes	17
		Rat Destroyers	42
		Rat-Nip	42
		Red Top	22
		Rhubarb Plants	20
		Rutabagas	19
		Rye, grain	24
		Rye Grasses	22
		Seeders	49-52
		Smoke Salt	51
		Snarol	39
		Spinach	17
		Sprayers	53
		Spray Materials	39-42
		Squash	18
		Strawberry Plants.....	Back Cover
		Sudan Grass	21
		Sweet Peas	35
		Timothy	21
		Tomatoes	19
		Tree Protectors	49
		Tree Tanglefoot	42
		Trowels	49
		Turnips	18
		Vetches	24
		Vigoro	54
		Water Hyacinths	38
		Water Softener	42
		Watermelons	13
		Wheat	23
		Worm Capsules	47

Sheps Plant Spray

KILLS PLANT INSECTS

on FLOWERS...
...VEGETABLES
VINES, SHRUBS



No. 106 R

KILLS INSECTS IN A JIFFY

Positive death to most sucking and chewing insects, including ants, aphids, thrips, green flies, many bugs, worms, caterpillars. Guaranteed non-poisonous—safe for humans, animals, birds and pets. Pleasant to use. Simply mix with water and it is ready to spray. No soap sud solution to make. More economical.

PRICES POSTPAID

1½-oz. Bottle (Makes 3 gals. Spray Sol.).....	\$.25
8-oz. Bottle (" 16 " " ").....	.75
Pint Bottle. (" 32 " " ").....	1.25
Quart Can.. (" 64 " " ").....	2.00

Bulk Prices Quoted On Request



EASY TO USE—Just mix with water and stir. No unpleasant odor.

WON'T GUM SPRAYERS—No bad effect on metal or rubber. Stays in solution and can't clog sprayers.

LIST PRICES NOT POSTPAID

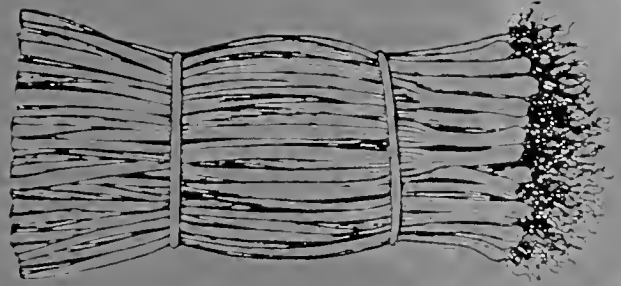
1 ounce bottles.....	\$ 0.35
6 ounce bottles.....	1.00
16 ounce bottles.....	2.00
32 ounce bottles.....	3.50
1 gallon bottles.....	13.00

Ever Green Can be Sent Through the Mail. Bulk Prices on Request. ORDER TODAY.

Crystal Wax—White Bermuda ONION PLANTS

Ready for shipment after March 1st

NOW YOU CAN HAVE BERMDA ONIONS IN YOUR OWN GARDEN. Because of the long ripening season necessary to mature Bermuda Onions it has been impossible in the past to raise this delicious onion in Western gardens. Raising a crop from seed was impossible. Now plants are available for re-planting and it is possible to grow the "finest and sweetest onion" of them all in your own garden. Plants are no longer an experiment. They all grow perfectly in every locality. Our plants will make early green onions for pulling and LARGE, SWEET MATURED ONIONS for the table or market. One thousand plants will produce 8 to 10 bushels of dried onions. Our plants are sure to grow.



NOTE: Onion plants are shipped on arrival of fresh supplies. Don't become discouraged if your order is delayed. We get your order out as promptly as possible.

Onion Sets- See Page 14 for Prices.

Prices, Postpaid

Over the counter price \$ somewhat lower

1 bundle of about	100 plants	\$0.30
5 bundles of about	500 plants	1.25
10 bundles of about	1000 plants	2.00

BERRY PLANTS

Disease Free Inspected Stock

MASTODON STRAWBERRY PLANTS



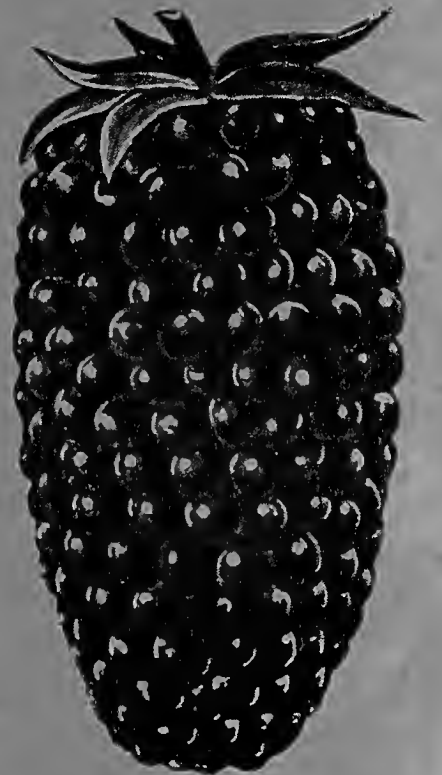
Mastodon, "The Giant Strawberry"

MASTODON—Still the world's greatest Ever-bearing Strawberry. Nothing like it has been achieved since its introduction a few years ago. **MASTODON** produces a bumper crop from early spring to late fall, being particularly prolific during August, September and October when other berries are off the market. In size, quality, flavor and appearance, Mastodon heads the list. This wonderful berry, unlike other everbearers, has very large plants; vigorous, heavily crowned and deep rooted. Plants set in February, March or April will be in full bearing by mid summer, and going strong in the fall. Many of the berries grow as large as a silver dollar. Our plants are large, vigorous, healthy, heavily rooted; have large, full crowns; carefully grown and are free from disease and pests. **Pre-paid; 25 plants \$1.00; 50 plants \$1.50; 100, \$2.50.**

YOUNGBERRY

THE LATEST
ADDITION
TO THE
BERRY
FAMILY

A cross between the Logan berry and dew berry. An exceptionally large, red, very productive berry. Fruit larger than loganberry, roundish black, and similar to raspberries in flavor. Vine is very vigorous and begins bearing at an early age. Youngberry berries



Youngberry

command the highest market price. Fruit colors well and is very sweet and large. Ten plants of this variety will make a row 80 feet long which will produce an astonishing amount of fruit. Culture the same as for other cane berries. Plant 8 feet apart in rows spaced 7 feet apart. Plants ready in March. **Prices postpaid: Each 25c; \$2.25 for 10 plants; \$5.00 for 25 plants. Get your order in early.**

NEW FLOWER VARIETIES For Your 1934 Garden



Verbena
Carmine Ball



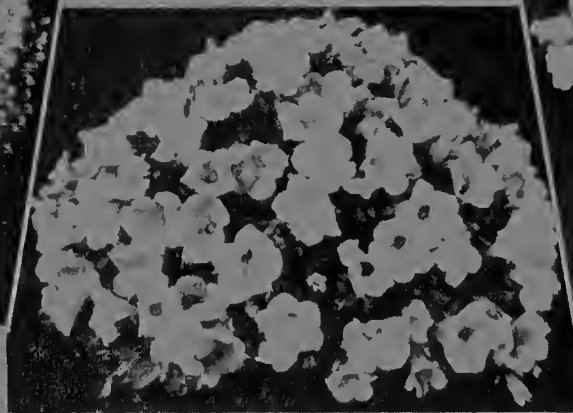
Scabiosa
Cattleya



Marigold
Guinea Gold



Annual
Canterbury Bell
Angelus Bell



Petunia Nan's Compacta Pink Gem



Golden Gleam
Nasturtium



Larkspur
Emperor Enchantress

1934 "All American" Flower Selection

— FOR DESCRIPTION AND PRICES, SEE PAGE TWO —